

# MARINE

AND

# MARINE

*PLUS*



# CONTENTS

Why Lubetech?	1
Marine - Why Marine?	2-3
Absorbent Pads & Rolls	4-5
Absorbent Socks & Pillows	6-7
Absorbent Boom	8-9
Absorbent Sweep & Pom-Pom	10-11
Absorbent Granules	12-13
12 Barrel SOPEP Spill Kit	14-15
7 Barrel SOPEP Spill Kit	16-17
Standard SOPEP Spill Kit	18-19
1 ½ Barrel SOPEP Spill Kit	20-21
Portable Spill Kit	22-23
Spill Kit Auxiliaries	24-25
Marine Plus - Why Marine Plus?	26-27
Fence Booms	28-29
Inflatable Booms	30-31
Skimmers	32-33
Oil Water Separator	34-35
Workboats	36-37
Dispersant	38-39
Pumps	40-41
Pressure Washer	42-43
Tanks	44-47
Compatibility Chart	48-49

## Why Lubetech?

**Here at Lubetech, we are passionate about making a difference in every area of spill control. An international team of dedicated professionals with decades of experience in all areas of spill control and spill control management, since 1996 we have led the way in the development and distribution of spill control products, and today our brand is globally recognised and a critical resource for more than 20,000 companies across 5 continents. We lead in not just one area, but four:**

## Technology

At Lubetech we know things are not always easy and that `safe` things are not always so. That is why we utilise technology to maximise performance of the products you use, making your life easier and genuinely safer. Our R&D team works hard to ensure the latest technology is in place. We use it everywhere: Technology in the fibres that make up your absorbent pads, keeping each fibre longer and stronger:

Technology in your absorbent socks, retaining more fluid: Technology in your spill pallets, so they last longer and carry more: Technology in your spill response kits, making them lighter and more absorbent... While our competitors offer what they call Second Generation products Lubetech is at Third Generation, and already planning for tomorrow.

## Sustainability

At Lubetech we strive to supply you with the very best spill control & environmental protection products available. With this comes a responsibility to help protect the wider environment and future generations. Wherever raw materials are sourced, wherever our products are manufactured, we pursue sustainability.

Increasingly developing products from renewable or recycled resources, we constantly reassess our environmental processes and ways to reduce our carbon footprint.

## Innovation

Innovation: One word, but it's what we're all about. Our philosophy is to think `outside the box` and come up with new ideas - Ideas to help you; new improved products and new ways to do things, all making it advantageous to work with us. Our objective is to make it easier for you to protect the environment, and that

is reflected in everything we do. Our products have all had hours of effort invested by our R&D team paying attention to every detail, ensuring the product is the most versatile, strongest and most efficiently designed currently available in the UK.

## Support

Lubetech are committed to providing a World Class level of technical support and backup for all customers. If you are unable to find required information in this

catalogue or on our comprehensive website just ask and we will do our very best to help.



# MARINE

## Why Marine?

Representing your daily discharge-prevention requirements: These are basic products that every vessel, every dock, every onboard plant or equipment room should have. All staff should know about and be trained in the use of such products and use them on a day-to-day basis.

Your first line of defence.

Absorbent pads and rolls for spill capture, socks to encircle the spill and pillows to aid in concentrated clean-up and of course, booms are a staple of prevention as both a barrier and bulk absorbent. For onboard use there are also granules that soak up internal spills in an efficient manner and the ranges of Spill Kits that meet ANY SOPEP requirements.

With the Lubetech `Marine` brand you can select not only those items that you use, indeed must have available, to deal with incidental spill management but also those integrated into maintenance, cleaning and safety operations to reduce not only the prospects for contamination but also to ensure the health and welfare of crew - and an efficient workspace.

By planning the use of absorbents such as pads and rolls, socks, and pillows and booms, you not only make the workplace safer, you also make it cleaner. Imperative when it takes seconds to prevent or eliminate a hazard compared to hours completing an incident report form and a meeting to discuss the consequences.

Our belief in Spill Kits is that they should always be considered as an emergency response tool for a situation or incident. Contents should be complete and ready for deployment and not be used on a daily basis. But the same absorbents that do such excellent service in an Emergency Spill Kit also serve a common purpose for regular maintenance and oil clean-up. A well trained crew who understand and frequently use the equipment in both training and response situations offers huge benefits for safety and operations.

We recommend boxes of pads and rolls of the same type that are found in the spill Kits are utilised for general day to day maintenance. You do not want to find a Spill Kit empty in an emergency situation 1,000 nautical miles from the nearest port!

Although we focus on oil-only products in our Marine range, Lubetech have other absorbents in the range to absorb a full range of fluids, even aggressive chemicals. If the requirement to prevent fluid contamination includes water (machinery or electronic spaces are a prime example), or the clean up involves a chemical that needs careful handling, you have alternatives in our Maintenance and Chemical ranges that can be deployed in an identical manner.

# ABSORBENT PADS & ROLLS

Lubetech Marine oil spill absorbent pads and rolls offer a highly cost-effective solution for oil spills. These high performance products absorb all hydrocarbons on deck or in the water.

Hydrophobic, they repel water by nature, while retaining buoyancy on water even when fully saturated.

All our pads and rolls are hi-loft, guaranteeing quick absorption and high capacity. Pads and rolls may be ordered separately from spill kits.





**TECH**  
FEATUES

**Lubetech Marine  
Absorbent Pads, Heavy  
Duty**

- Heavy duty coverstock for increased tear strength.
- Floats on water even when saturated

Product No.	Dimensions	Absorbency	Qty
77-7000	50cm x 40cm	0.8 Litres Per Pad	100



**TECH**  
FEATUES

**Lubetech Marine  
Absorbent Pads, High  
Recurring**

- Lightweight for easy handling.
- Open fibres for maximum absorption speed

Product No.	Dimensions	Absorbency	Qty
59-7000	50cm x 40cm	0.6 Litres Per Pad	200



**TECH**  
FEATUES

**Lubetech Marine Absorbent  
Roll, Heavy Duty**

- Perforated for multiple applications.
- Floats on water even when saturated
- Absorbs oil and repels water.

Product No.	Dimensions	Absorbency	Qty
77-7001	50cm x 40m	80 Litres Per Roll	1



**TECH**  
FEATUES

**Lubetech Marine Absorbent  
Roll, Heavy Duty**

- All the benefits of the 77-7001, in double width for maximum coverage.

Product No.	Dimensions	Absorbency	Qty
77-7002	90cm x 40m	144 Litres Per Roll	1

# ABSORBENTS

# SOCKS & PILLOWS

## **Absorbent Socks:**

Lubetech absorbent socks are world-renowned for high performance and excellent quality. Our oil-only socks absorb hydrocarbons but not water making them ideal for use when a spill needs to be surrounded and absorbed. Inherently flexible, the socks are perfect for placement around leaking pumps or machinery to collect oil.

## **Absorbent Pillows:**

Lubetech absorbent pillows are your first choice for use when you need higher, more concentrated absorption capacity in any area which is hard to reach. With their large surface area, our pillows substantially reduce spill clean-up time. These pillows only absorb hydrocarbons and repel water which makes them perfect to use also under rainy or wet conditions.

Socks and pillows may be ordered separately from spill kits.

The Lubetech booms are all Federation of Environmental Professionals (FEP) -certified.





## TECH FEATURES

### Heavy Duty, Sock

- Extra thick outer skin for excellent fluid retention.
- Essential in the engine room.
- Absorb more than four litres of oil per sock.

Product No.	Dimensions	Absorbency	Qty
75-3000	6cm ø x 1.2m	4 Litres Per Sock	20



## TECH FEATURES

### Heavy Duty, Pillow

- Spunbond hydrophobic skin lets in oil only.
- Flexible so ideal for using where space is limited.
- High absorbent, virgin polypropylene fill.

Product No.	Dimensions	Absorbency	Qty
57-7009	38cm x 23cm	3.5 Litres Per Pillow	16

# ABSORBENT BOOM

Maritime specialists recognize Lubetech absorbent booms as the best in the market.

Our booms absorb hydrocarbons but will not take on any water, so they retain buoyancy and barrier effect even when fully saturated. The booms are provided with strong roping along the entire length of the boom and the highest quality of steel karabiners and metal rings for linking, which makes them extremely strong once connected.

Booms may be ordered separately from spill kits.

The Lubetech booms are all FEP-certified.



**TECH**  
FEATURES

### Lubetech Marine Absorbent Booms, Heavy Duty

- Nylon outer net and spunbond inner skin for maximum strength and oil retention - Floats on water.
- Suitable for deploying in open seas.
- Fitted with steel clips to form a continuous boom.

Product No.	Dimensions	Absorbency	Qty
57-3005	13cm ø x 3m	30 Litres Per Boom	4



**TECH**  
FEATURES

### Lubetech Marine Absorbent Booms, Heavy Duty

- Nylon outer net and spunbond inner skin for maximum strength and oil retention - Floats on water.
- Suitable for deploying in open seas.
- Fitted with steel clips to form a continuous boom.

Product No.	Dimensions	Absorbency	Qty
57-3008	20cm ø x 3m	80 Litres Per Boom	4



# ABSORBENT SWEEP & POM-POMS

## **Absorbent Sweep:**

The Lubetech absorbent sweep is drawn over the surface of the water to absorb thin sheens or surface oil spills. With integrated straps making it very easy to use, it is the ultimate product to use when cleaning up spills or creating barriers.

## **Absorbent Pom-Poms:**

Our pom-poms are constructed from thousands of polypropylene strands, creating a high surface area absorbent. Originally developed to absorb Bunker C, Crude and 4, 5 & 6 type oils, our pom-poms also collect thicker and coagulated oils for use on beaches and under cold weather conditions. As with all oil-only Lubetech products, the pom-poms are hydrophobic so they retain flotation capability on water even after absorption of oils, enabling easier collection.

Lubetech absorbent sweeps and pom-poms may be ordered separately from spill kits.

The Lubetech absorbent sweeps and pom-poms are FEP-certified.

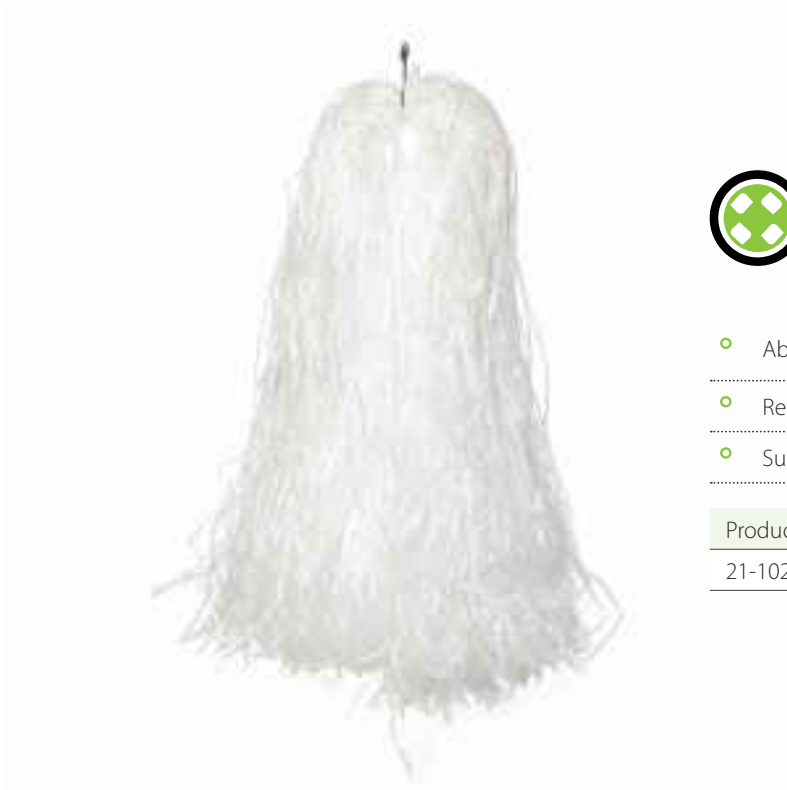




**Lubetech Marine  
Absorbent Sweep,  
Heavy Duty**

- Absorbs oil sheens or spills
- Integrated straps for easy handling
- Absorbent and barrier in one

Product No.	Dimensions	Absorbency	Qty
21-1007	48cm x 30.5m	94 Litres	1



**Lubetech Marine  
Absorbent Pom-Poms**

- Absorbs a wide range of oils
- Retains buoyancy even when saturated
- Suitable for bunker fuel and emulsified crude

Product No.	Dimensions	Qty
21-1028	20cm dia x 40cm	30



# ABSORBENT GRANULES

## **Cellulose Absorbent Granules:**

The Lubetech cellulose absorbent granules are extremely effective for interior oil spills. Light weight and fire retardant to BS 476 Part 7 Class 1, easy handling and safety is guaranteed. Lubetech cellulose granules are made from sustainable sources only.

## **XR60 Mineral Absorbent Granules:**

Our mineral-based (attapulgitite) absorbent granules are all-round clean-up tools for indoor or outdoor use. Chemically inert and suitable for any type of spill, they retain high crush-resistance even when saturated. With high bulk-density for use under windy conditions, Lubetech granules are made from sustainable sources only.

The Lubetech XR60 mineral absorbent granules and Lubetech cellulose absorbent granules may be ordered separately from spill kits.

The Lubetech XR60 mineral absorbent granules and Lubetech cellulose absorbent granules are all FEP-certified.



**TECH**  
FEATURES

**Lubetech Natural Cellulose Absorbent Granules**

- Fire retardant to BS476 Part 7 Class 1

---

- Cellulose granules from sustainable sources

---

- Lightweight for easy handling

---

Product No.	Bag Size	Absorbency	Qty
11-1113	30 Litres	12 Litres Per Bag	1



**TECH**  
FEATURES

**Lubetech XR60 General-purpose Mineral Absorbent Granules**

- Chemically inert

---

- High crush resistance even when saturated

---

- Attapulgite natural mineral

---

Product No.	Bag Size	Absorbency	Qty
11-1114	20 Litres	10 Litres Per Bag	1



# 12 BARREL SOPEP SPILL KIT



**TECH**  
FEATURES

**12 Barrel SOPEP Spill Kit**  
**Item - 66-1000**  
**IMPA Code: 232532**

- Genuine 1,900 litre+ absorbent capacity (12 barrels)
- Equipped for five man clean up team
- Includes PPE equipment

Refill Kit Item No: 66-1004



Content:

### **PERSONAL PROTECTION EQUIPMENT (PPE)**

- 5 x Pairs of Chemical Resistant Neoprene Safety Gloves
- 5 x Safety Goggles (Flash Proof)
- 5 x Safety Coveralls
- 5 x Breath Protection Masks (P2)

### **ABSORBENT MATERIAL**

- 600 x Oil Only Absorbent Pads (50 cm x 40 cm, Heavyweight)
- 2 x Oil Only Absorbent Rolls (50 cm x 40m, Heavyweight)
- 32 x Oil Only Absorbent Socks (8 cm  $\varnothing$  x 120 cm)
- 24 x Oil Only Absorbent Pillows (38 x 23 x 5 cm)
- 12 x Oil Only Absorbent Booms (13 cm  $\varnothing$  x 300 cm)
- 2 x Oil Only Absorbent Sweep (48 cm x 30.5 m)

### **HAND TOOLS, PUMPS & AUXILIARIES**

- 1 x Spill Response Instruction Handbook (English)
- 1 x Hand Level Transfer Pump (Polypropylene)
- 2 x Heavy Duty Buckets (10 litres each, total waste capacity 20 L)
- 2 x Non-Sparking Hand Shovels (55 cm, Blade 24 cm wide)
- 2 x Non-Sparking Hand Scoops
- 2 x Scupper Plugs (65 - 85 mm, Brass)

### **STORAGE AND WASTE COLLECTION**

- 2 x Storage Containers (1,480 litres each, weather-resistant, lockable, total waste capacity 2,960 L)
- 2 x Storage Flexible Big Bags (1,000 litres each, total waste capacity 2,000 L)
- 20 x Heavy Duty Waste Bags with Closure Ties (120 litres each, total waste capacity 2,400 L)

### **CLEANING EQUIPMENT**

- 1 x Oil Stain Remover No 4 (10 litres)
- 1 x Jet Spray Oil Stain Remover Applicator (10 litres)





# 7 BARREL SOPEP SPILL KIT



**TECH**  
FEATURES

**7 Barrel SOPEP Spill Kit**  
**Item: 66-1001**  
**IMPA Code: 232531**

- Genuine 1,100 Litre+ absorbent capacity
- Equipped for five man clean up team
- Includes PPE equipment

Refill Kit Item No: 66-1005





Content:

### **PERSONAL PROTECTION EQUIPMENT (PPE)**

- 5 x Pairs of Chemical Resistant Neoprene Safety Gloves
- 5 x Safety Goggles (Flash Proof)
- 5 x Safety Coveralls
- 5 x Breath Protection Masks (P2)

### **ABSORBENT MATERIAL**

- 400 x Oil Only Absorbent Pads (50 cm x 40 cm, Heavyweight)
- 1 x Oil Only Absorbent Rolls (50 cm x 40 m, Heavyweight)
- 24 x Oil Only Absorbent Socks (8cm  $\varnothing$  x 120cm)
- 18 x Oil Only Absorbent Pillows (38 x 23 x 5cm)
- 8 x Oil Only Absorbent Booms (13 cm  $\varnothing$  x 300cm)
- 1 x Oil Only Absorbent Sweep (48 cm x 30.5m)

### **HAND TOOLS, PUMPS & AUXILIARIES**

- 1 x Spill Response Instruction Handbook (English)
- 1 x Hand Level Transfer Pump (Polypropylene)
- 2 x Heavy Duty Buckets (10 litres each, total waste capacity 20 L)
- 2 x Non-Sparking Hand Shovels (55 cm, Blade 24 cm wide)
- 2 x Non-Sparking Hand Scoops
- 2 x Scupper Plugs (65 - 85 mm, Brass)

### **STORAGE AND WASTE COLLECTION**

- 1 x Storage Containers (1,480 litres each, weather-resistant, lockable, total waste capacity 2 960 L)
- 2 x Storage Flexible Big Bags (1,000 litres each, total waste capacity 2,000 L)
- 20 x Heavy Duty Waste Bags with Closure Ties (120 litres each, total waste capacity 2 400 L)

### **CLEANING EQUIPMENT**

- 1 x Oil Stain Remover No 4 (10 litres)
- 1 x Jet Spray Oil Stain Remover Applicator (10 litres)



# STANDARD SOPEP SPILL KIT



**TECH**  
FEATURES

**Standard SOPEP Spill Kit**  
**Item: 66-1002**

- Genuine 600 Litre+ absorbent capacity
- Equipped for three man clean up team
- Includes PPE equipment

Refill Kit Item No: 66-1006

Content:

### **PERSONAL PROTECTION EQUIPMENT (PPE)**

- 3 x Pairs of Chemical Resistant Neoprene Safety Gloves
- 3 x Safety Goggles (Flash Proof)
- 3 x Safety Coveralls
- 3 x Breath Protection Masks (P2)

### **ABSORBENT MATERIAL**

- 300 x Oil Only Absorbent Pads (50 x 40 cm, Heavyweight)
- 20 x Oil Only Absorbent Socks (8 cm ø x 120 cm)
- 12 x Oil Only Absorbent Pillows (38 x 23 x 5 cm)
- 2 x Oil Only Absorbent Booms (13 cm ø x 300 cm)
- 1 x Oil Only Absorbent Sweep (48 cm x 30.5 m)

### **HAND TOOLS, PUMPS & AUXILIARIES**

- 1 x Spill Response Instruction Handbook (English)
- 1 x Hand Level Transfer Pump (Polypropylene)
- 2 x Heavy Duty Buckets (10 litres each, total waste capacity 20 L)
- 2 x Non-Sparking Hand Shovels (55 cm, Blade 24 cm wide)
- 2 x Non-Sparking Hand Scoops
- 2 x Scupper Plugs (65 - 85 mm, Brass)

### **STORAGE AND WASTE COLLECTION**

- 1 x Storage Container (400 litres, weather resistant, lockable, total waste capacity 400 L)
- 10 x Heavy Duty Waste Bags with Closure Ties (120 litres each, total waste capacity 1,200 L)



# 1 1/2 BARREL SOPEP SPILL KIT



**TECH**  
FEATURES

**1 1/2 Barrel SOPEP Spill Kit**  
**Item: 66-1003**

- Genuine 256 Litre+ absorbent capacity
- Equipped for three man clean up team
- Includes PPE equipment

Refill Kit Item No: 66-1007



Content:

### **PERSONAL PROTECTION EQUIPMENT (PPE)**

- 3 x Pairs of Chemical Resistant Neoprene Safety Gloves
- 3 x Safety Goggles (Flash Proof)
- 3 x Safety Coveralls
- 3 x Breath Protection Masks (P2)

### **ABSORBENT MATERIAL**

- 300 x Oil Only Absorbent Pads (50 x 40 cm, Heavyweight)
- 30 x Oil Only Absorbent Socks (8 cm  $\varnothing$  x 120 cm)
- 16 x Oil Only Absorbent Pillows (38 x 23 x 5 cm)
- 2 x Oil Only Absorbent Booms (13 cm  $\varnothing$  x 300 cm)
- 1 x Oil Only Absorbent Sweep (48 cm x 30.5 m)

### **HAND TOOLS, PUMPS & AUXILIARIES**

- 1 x Spill Response Instruction Handbook (English)
- 1 x Hand Level Transfer Pump (Polypropylene)
- 2 x Heavy Duty Buckets (10 litres each, total waste capacity 20 L)
- 2 x Non-Sparking Hand Shovels (55 cm, Blade 24 cm wide)
- 2 x Non-Sparking Hand Scoops
- 2 x Scupper Plugs (65 - 85 mm, Brass)

### **STORAGE AND WASTE COLLECTION**

- 1 x Storage Containers (400 litres each, weather resistant, lockable, total waste capacity 400 L)
- 10 x Heavy Duty Waste Bags with Closure Ties (120 litres each, total waste capacity 1,200 L)





# PORTABLE SPILL KIT



**TECH**  
FEATURES

**Portable Spill Kit**  
**Item: 66-1009**  
**IMPA Code: 232516**

- Oil-Only kit in water-resistant holdall
- Bonded pads and coverstock for strength
- Thickness for speedy absorption

Refill Kit Item No: 66-1010

Content:

**ABSORBENT MATERIAL**

- 30 x Oil Only Absorbent Pads (40 x 50 cm, Heavyweight)
- 3 x Oil Only Absorbent Socks (8 cm ø x 120 cm)
- 3 x Oil Only Absorbent Pillows (38 x 23 x 5 cm)

**HAND TOOLS, PUMPS & AUXILIARIES**

- 1 x Spill Response Instruction Handbook (English)
- 1 x Hand Level Transfer Pump (Polypropylene)
- 2 x Heavy Duty Buckets (10 litres each, total waste capacity 20 L)
- 2 x Non-Sparking Hand Shovels (55 cm, Blade 24 cm wide)
- 2 x Non-Sparking Hand Scoops
- 2 x Scupper Plugs (65 - 85 mm, Brass)

**STORAGE AND WASTE COLLECTION**

- 1 x Heavy Duty, Water-Resistant Holdall Bag
- 5 x Heavy Duty Waste Bags with Closure Ties (120 litres each, total waste capacity 600 L)



# ***SPILL KIT ANCILLARIES***



A Wide range of Accessories and codes for individual supply including heavy duty storage bins in a wide range of colours for strategic placement close to areas of risk to keep spill kits etc from inappropriate use.

Maintain consistency of supply and use by specifying Lubetech replacements, use for top-ups for accessed Spill Kits or to provide additional or accessory items.

<b><u>Item No</u></b>	<b><u>Description</u></b>
SP-2921	Spill Kit Storage Box, 1,000 L content (1,460 x 1,010 x 975 mm), Yellow
SP-2922	Spill Kit Storage Box, 1,000 L content (1,460 x 1,010 x 975 mm), Orange
SP-2923	Spill Kit Storage Box, 480 L content (1,265 x 920 x 855 mm), Yellow
SP-2924	Spill Kit Storage Box, 480 L content (1,265 x 920 x 855 mm), Orange
SP-2716	Non-Sparking Scoop
34-1028	Non-Sparking Shovel, Large Blade
SP-2869	Bucket, 10 litres, Polyethylene
SP-2925	Big Bag for Oil Spill Waste (1,000 litre)
15-1194	Hand Pump, Non-Sparking
SP-2920	Scupper Plug, Brass, 65 – 85 mm
31-3094	Jet Sprayer, 10 litres
35-1004	Lubetech Oil Clean Up Agent, Bio-degradable, 10 litre jerry can
34-1004	Waste Bag, Heavy Duty, 120 litres
34-1003	Cable Tie for Waste Bags
34-1000	Safety Goggle, Flash Proof
34-1001	Coverall Suite, Disposable, XL
34-1015	Safety Gloves, Chemical resistant
SP-2591	Face Masks, FP2



# MARINE *PLUS*



## Why Marine Plus?

Here we deal with the more complex products that fulfil the substantial prevention role, attend to larger-scale spills and deal with more complex on-water incidents, possibly involving substantial spills, and environmental contamination risks.

Here your priority is to contain the expansion of the spill, then capture it as effectively and efficiently as possible.

Booms can take a variety of forms but the inflatable boom is a core product, ideal as your first line of defence as it contains spills but also serves as a barrier to spills in the first place – use as a companion to bunkering or loading/unloading operations. Meanwhile during storage it occupies a minimal volume when deflated.

Skimmers are the current standard in spill collection as they provide not only efficient collection at a substantial rate, they also deal with a wide variety of oil densities. Available in man-portable or machine-supported formats, with various pumping options, our range is flexible and professional.

Oil/Water Separators are also increasingly popular as they permit immediate on-site treatment of recovered oil-contaminated water. The Lubetech Oil Water Separator features no fewer than five filtration processes that attend to simple transit blockage down to coalescing filters for microfiltering of final remnants allowing water to be released or returned to service with no contamination risk.

Mounting and deployment of these specialised pieces of equipment commonly dealt with by the provision of a specifically-equipped workboat and again, Lubetech are able to offer the full range from Aluminium, Fibreglass and steel ranges from 2.5m to 25m +, for use as simple boom deployment boats to rapid response, harbour operations and even patrol vessels.

# FENCE BOOMS

Lubetech Fence Booms are a simple but effective method of containing oil spills when they occur on water. The booms consist of a PVC or PU barrier, with closed cell foam flotation (to eliminate the possibility of the boom sinking if badly damaged), with galvanised chain as ballast. The boom is available in standard sizes ranging from 45cm through to 90cm in height. However, for large enquiries we are also able to supply custom sizes and heights to meet your exact specifications.

This type of boom can be deployed extremely rapidly, with little ancillary equipment, and is a cost effective on-site method of ensuring protection and containment. When deployed from a winder, the boom can simply be pulled off and towed into position by a small workboat, and 100m can easily be deployed in 2 to 3 minutes. We are able to offer ancillaries such as tide sliders, tow ends, etc.

If oiled, then after operation this kind of boom can easily be cleaned using a pressure washer in a bunded area, allowing the boom to be re-used for multiple spills, multiple times.



 **TECH**  
FEATURES **Fence Booms**

- Orange in colour

---

- Made from 900g PVC

---

- Unicons as Standard

---

- Options available include:  
900g PU, ASTM Connectors, section lengths in 5, 15, 20 and 25m, yellow fabric

---

Model	Length	Freeboard	Draught	Ballast	Weight
450	10m	150mm	300mm	Enclosed Galvanised Chain	2kg/mtr
500	10m	150mm	350mm	Enclosed Galvanised Chain	2.25kg/mtr
600	10m	200mm	400mm	Enclosed Galvanised Chain	2.5kg/mtr
750	10m	250mm	500mm	Enclosed Galvanised Chain	3kg/mtr
900	10m	300mm	600mm	Enclosed Galvanised Chain	3.5kg/mtr

# INFLATABLE BOOMS

When dealing with Marine and/or Offshore spills, foam-filled fence booms may not be the best choice to contain the spill. We recommend for offshore and larger spills our range of Inflatable booms as a more suitable method of containing spills. When combined with the boom winders, power packs, air blowers and other ancillary devices, a complete offshore containment package, can be provided to fulfill your needs.

Our current range of booms is available in PVC and PU in sizes up to 1.5m, and shortly we will be able to offer an additional range of rubber booms, tougher and more durable than the PU range. We are always willing to consider other sizes and options to those in the brochure.

An air-filled boom provides the best overall barrier in the event of an oil spill, with air chambers that are able to flex and follow the wave characteristics. The boom only has to be inflated when used, so that during storage the volume of the boom is minimised, allowing large quantities of boom to be stored on winders, ready for deployment in an emergency.





**TECH**  
**FEATURES** **Inflatable Booms**

- Orange in colour

---

- Made from 900g PVC

---

- Unicons as Standard

---

- Options available include:  
 900g PU, ASTM Connectors, section lengths in 5, 15, 20 and 25m, yellow fabric

---

Model	Length	Freeboard	Draught	Ballast	Weight
500	10m	200mm	300mm	Enclosed Galvanised Chain	2kg/mtr
750	10m	300mm	450mm	Enclosed Galvanised Chain	2.25kg/mtr
900	10m	400mm	500mm	Enclosed Galvanised Chain	2.5kg/mtr
1200	10m	500mm	700mm	Enclosed Galvanised Chain	3kg/mtr
1500	10m	600mm	900mm	Enclosed Galvanised Chain	3.5kg/mtr



# SKIMMERS

# SKIMMERS

When a spill occurs on the surface of water, a method of doing is required to separate and removed the oil (which naturally floats on top of the water), from the surface of the water column. A skimmer of which there are various types, is the best utility to do this.

Lubetech are in the process of introducing a range of oil recovery skimmers. We are able to offer Weir, Disc and Mop skimmers with various recovery capacities, plus all the ancillary equipment such as Power Packs, Pumps, Hoses, etc, which are required to successfully deploy and operate the equipment.

Our range of skimmers are able to deal with a wide variety of oils. From thick, viscous crude oils through to light gear oils, our skimmers will handle them all.

Although the complete range is still being finalised, below is an example of the range, please feel free to call and discuss your needs with us.



# OIL WATER SEPARATOR

An oily water separator is a self contained unit into which you can feed, release water containing oil, and receive water which is safe for discharge into the sea or watercourses.



The Oily Water Separator from Lubetech is a very simple, but highly effective system, which, when combined with the external pump, is able to filter 15m<sup>3</sup> per hour to allow on site immediate treatment of recovered oily water and return of the filtered water to the environment to reduce the need for transportation and removal of dirty material from a site for treatment.

The Oily Water Separator consists of 5 separate filtration processes, from a simple weir to remove the majority of the oil, through to coalescing filters and oil absorbents to filter out the final remnants. This comprehensive process ensures that the water coming out of the outlet meets the legal requirements in nearly every country for direct discharge into water courses.

Where this unit is mounted on a trailer, it can easily be transferred between sites, and can be operating in minutes, which, when combined with a skimming system, allows rapid collection, treatment and discharge of processed water.



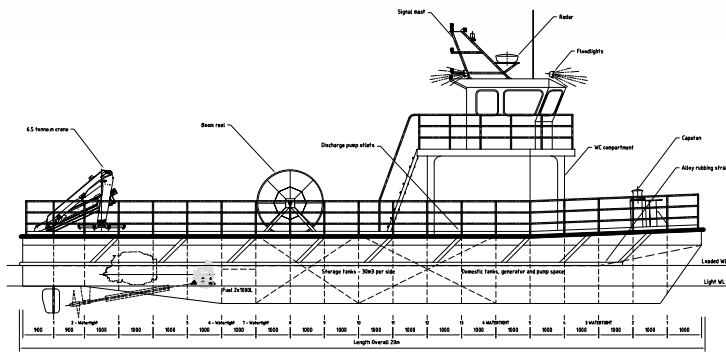
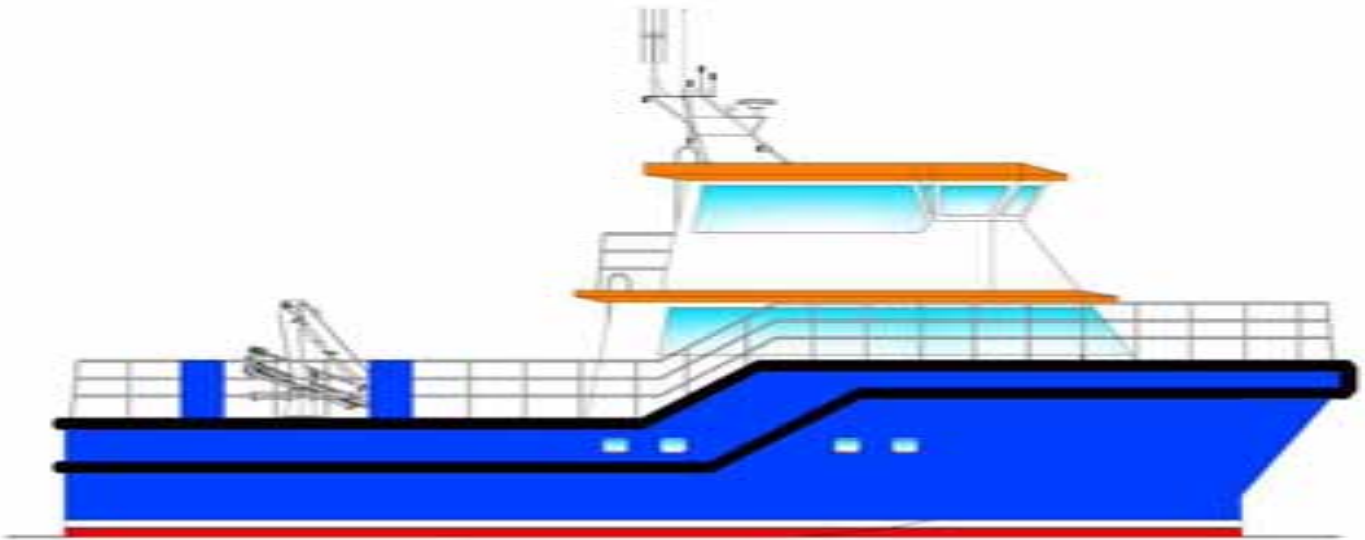
# WORKBOATS

# WORKBOATS

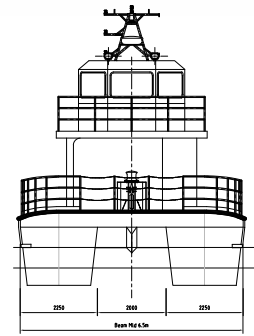
Lubetech are able to offer a range of Aluminium, Fibreglass and Steel workboats for use as boom deployment boats, rapid response vessels and patrol boats. The range available in sizes from 2.5m through to 25m, and in types from RIB, through Landing Boats, to workboats, harbour control boats, flat bottom skiffs, and sports boats with deep V hulls.

We are extremely flexible and able to consider all your requirements and also have the knowledge to be able to suggest vessels for your needs. Along with the actual boats, we are able to offer a full range of accessories and ancillaries including trailers, inboard and outboard engines, lifejackets, etc, etc, and if you have specific needs and equipment your vessels must have, then we'll do our best to assist.

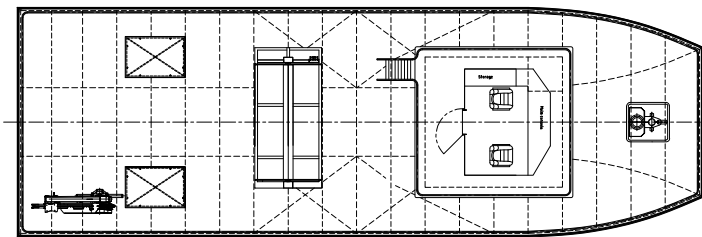




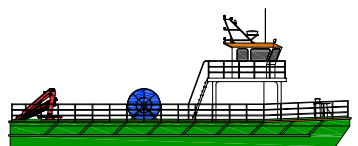
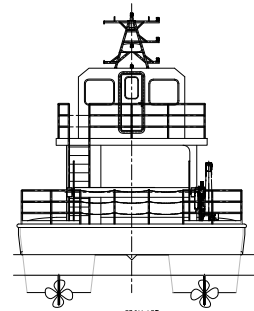
PROFILE FROM STARBOARD



FROM FORWARD



PLAN ON WEATHER DECK



PRINCIPLE DIMENSIONS

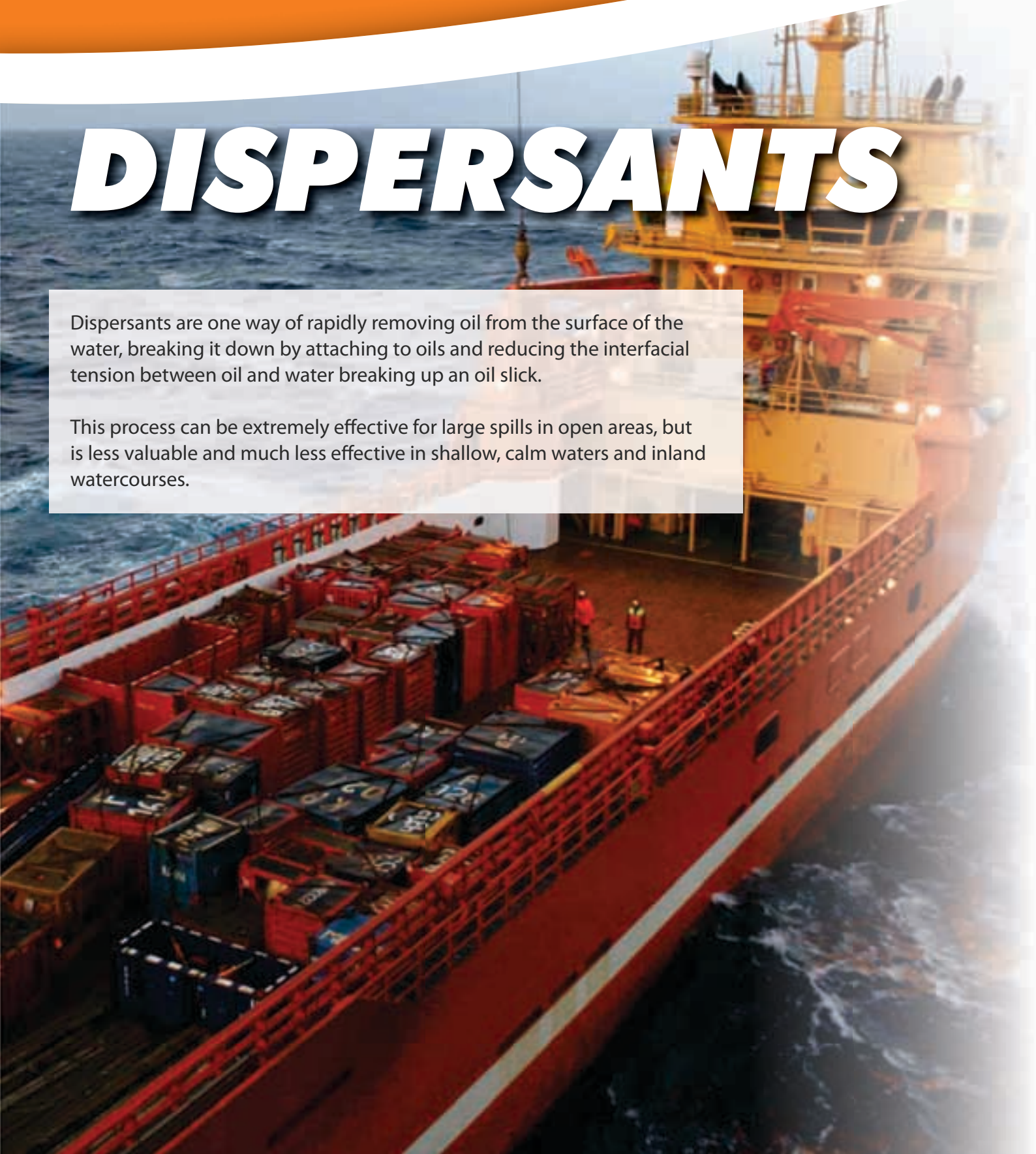
Length Overall	20.0m	Payload	60 tonnes
Beam Overall	4.5m	Speed (light)	18 knots
Displacement (light)	30 tonnes	Engines	2 No. Cummins QSC8.3 5000hp Marine Diesel Engines
		Propulsion	4800kw prop.

**DISPERSANT**

# **DISPERSANTS**

Dispersants are one way of rapidly removing oil from the surface of the water, breaking it down by attaching to oils and reducing the interfacial tension between oil and water breaking up an oil slick.

This process can be extremely effective for large spills in open areas, but is less valuable and much less effective in shallow, calm waters and inland watercourses.



With the Slickgone NS Type 3 product we are able to offer the recognised industry-standard chemical dispersant for use from boat, airplane, helicopter or even backpack sprayer.

Unlike many dispersants, Slickgone NS Type 3 works effectively on a wide range of oils, gives excellent results, plus easily handles crudes with high wax content, making it even more flexible and versatile.

Slickgone NS Type 3 meets the stringent requirements of NETCEN UK, and is approved under the Ministry of Agriculture, Fisheries and Food's toxicity requirements. Please consult us for a list of the latest approvals/acceptances for overseas countries, as this is ever-growing.

Lastly, Slickgone NS Type 3 is highly effective at emulsifying crude oils, fuel oil and water-in-oil emulsions even at low temperatures, producing oil droplets small enough to be retained beneath the sea surface to be rapidly diluted by subsurface mixing and biodegraded by micro-organisms.

PH	Specific Gravity	Viscosity	Flash Point	Corrosivity	Storage Life
Neutral	0.86 at 20C	30-60 cP at 0C	71C	Magnesium -0.3mg Aluminium -0.1mg Steel -0.1mg Cadmium pl 0.7mg Copper +0.2mg	Conforms to NETCEN UK, LR448 (OP) specification when stored in suppliers original unopened containers



# PUMPS

# PUMPS

For a skimmer to operate effectively, or to transfer fluids between two locations, a pump is required. The pumps offered by Lubetech are targetted at pumping oil and are extremely effective for this purpose.





Lubetech are currently able to offer a range of 3 pumps, ideal for both pumping applications and for operation of skimmers in remote conditions. The flexibility of the pumps allows us to meet a range of requirements.

Both the T300 and M300 are simple yet compact versions of the same peristaltic pumping unit, pumping a maximum of 18m<sup>3</sup>/hr, and 20m<sup>3</sup>/hr respectively. Both models can be supplied with either a Honda petrol engine, or an electric motor dependant on the customers requirements, mounted in a sturdy and liftable frame.

A further option is the PD75 pump. This has become the workhorse and backbone in many industries, a very compact but powerful positive displacement transfer pump with the ability to self prime, and run dry indefinitely if left operating unattended (If so, we would always recommend positioning a Site Mat under the pump). The pump is very simple to maintain, and is supplied on a two wheeled trolley to allow portability. With a max pumping capacity of 30m<sup>3</sup>/hr, and a suction lift of over 9m, this powerful pump is ideal for dealing with oil transfer and emergency response situations.

Model	Engine	Type of Pump	Trolley	Pump Speed	Capacity	Suction Lift	Solids Size	Delivery Head	Benefits
T300E	Honda GC160 3.7kW	Peristaltic	Fixed Transport cage	4,700rpm	18m <sup>3</sup> /hr	9.5m	12mm	50m	Low Running Costs & Compact design
M300	Honda GC160 3.7kW	Peristaltic	Fixed Transport Cage	5,000rpm	20m <sup>3</sup> /hr	9.5m	12mm	50m	Low Running Costs & Compact design
PD75	rL48 electric start diesel engine	Positive Displacement	2 Wheel Trolley	1,500rpm	30m <sup>3</sup> /hr	9.1m	6mm	30.5m	Lifting eye and stone catcher

## PRESSURE WASHER

# PRESSURE WASHER

The Lubetech Hotshot 200 High Pressure Washer is a highly flexible mobile unit, powerful enough to deal with removal of oil and chemical stains, cleaning, removal of chewing gum and graffiti amongst other applications.

The Hot Shot 200 is mounted on a road-legal trailer and can easily be towed and transported between sites. The self-contained system can then be rapidly deployed to quickly respond to and deal with pollution.

Alongside the basic versatility, the unit has the facility for heating water, plus chemical dosing (Chemical tank not included). This allows even tougher stains to be easily dealt with and removed by this unit.



**TECH**  
 FEATURES **Pressure Washer**

- Suitable for Pumping, Cleaning or Graffiti removal operations

---

- Electric or Internal Combustion versions

---

- Can be used in a wide range of operating environments

---

- Mounted on a road legal trailer

---

- Self-contained including hose reel

---

- Options available include:  
 Low Water Cut Out, Engine Low Oil Pressure Cut Out, High Water Temp Cut Out

---

Model	Max Working Pressure	Max Flow Rate	Pump	Water Tank	Engine	Diesel Tank	Weight	Dimensions
Hotshot 200	210 bar	19 l/m	Hawk HC530	110L	Lombardini LDW1003	45L	875kg	3.5 x 1.46 x 1.311m



# TANKS

# TANKS

We offer the tough and rugged range of Fastanks, Bunds and Rapide tanks, manufactured in tough ripstop acrylic and vinyl coated polyester fabric, with an aluminium support frame (on certain models). These high capacity yet portable tanks are easily transported to site and assembled within minutes to allow for an area to clean and wash equipment, store oils/chemicals in quantities up to 10,000 Litres, or cleaning of wildlife.

Through the flexibility of these tanks, we are able to offer a variety of solutions for your storage and containment requirements.

In addition to these static, land based tanks, we also offer floating tanks for transportation, and local storage of oil during shipboard recovery. Please contact us for information on these new products.



**TECH**  
FEATURES

**Fastank**

- Rapid deployment
- Various sizes and types
- Tough and rugged
- Easily transportable when packed





## FASTANK 1,500/2,000

Model	Dimensions (Assembled)	Dimensions (Packaged)	Capacity	Temp Range	Accessories included	Options
1500	3.2m(w) x 1.15m(h)	1.6 x 0.46 x 0.5m	7,500L	-20 °C to +80 °C	EzeeBox	Ground Mat, Roof Cover, Polythene Liner, Decanting Valve, Pipe Saddle
2000	3.2m(w) x 1.5m(h)	1.6 x 0.46 x 0.5m	10,000L	-20 °C to +80 °C	EzeeBox	Ground Mat, Roof Cover, Polythene Liner, Decanting Valve, Pipe Saddle



## FASTANK 1,3,5

Model	Dimensions (Assembled)	Dimensions (Packaged)	Capacity	Temp Range	Accessories included	Options
1	1.2(dia) x 0.9m(h)	0.92 x 0.3 x 0.23m	1,000L	-20 °C to +80 °C	Easy Carry Bag	Ground Mat, Hand Pump, Roof Cover, Polythene Liner, Decanting Valve
3	1.8(dia) x 1.25(h)	1.26 x 0.28 x 0.33m	3,000L	-20 °C to +80 °C	Easy Carry Bag	Ground Mat, Hand Pump, Roof Cover, Polythene Liner, Decanting Valve
5	2.3(dia) x 1.25m(h)	1.75 0.23 x 0.18m	5,000L	-20 °C to +80 °C	Easy Carry Bag	Ground Mat, Hand Pump, Roof Cover, Polythene Liner, Decanting Valve

# TANKS

## **TECH** FEATURES **Rapide**

- Emergency containment or washdown
- Simple assembly without tools
- Can be hand carried
- Includes a range of accessories for maximum usability



Model	Dimensions (Assembled)	Dimensions (Packaged)	Capacity	Temp Range	Accessories included	Options
Rapide	1.27 x 1.67 x 0.6m	1.75 x 0.23 x 0.18m	1,500L	-20°C to +80 °C	Carrying Case, Repair Kit	Roof Cover, Polythene Liner, Hand Pumo, Ground Mat

**TECH**  
FEATURES **Bund**

- Portable containment trusted worldwide
- Land or Marine based
- Lightweight and easy transportable
- Use for storage, cleaning or collection



## FASTANK BUND

Model	Dimensions (Assembled)	Dimensions (Packaged)	Capacity	Temp Range	Accessories included	Options
Bund 1x1	1 x 1 x 0.25m	0.6 x 0.1 x 0.3m	250L	-20 °C to +80 °C	Easy Carry Bag	Polythene Liner, Ground Mat, Protective Mat, Overflow Control Kit
Bund 1x2	1 x 2 x 0.25m	0.6 x 0.1 x 0.3m	500L	-20 °C to +80 °C	Easy Carry Bag	Polythene Liner, Ground Mat, Protective Mat, Overflow Control Kit
Bund 2x2	2 x 2 x 0.25m	0.6 x 0.15 x 0.5m	1,000L	-20 °C to +80 °C	Easy Carry Bag	Polythene Liner, Ground Mat, Protective Mat, Overflow Control Kit
Bund 2x3.5	2 x 3.5 x 0.25m	0.6 x 0.15 x 0.35m	1,750L	-20 °C to +80 °C	Easy Carry Bag	Polythene Liner, Ground Mat, Protective Mat, Overflow Control Kit
Bund 2.5x6	2.5 x 6 x 0.25m	0.8 x 0.15 x 0.6m	3,750L	-20 °C to +80 °C	Easy Carry Bag	Polythene Liner, Ground Mat, Protective Mat, Overflow Control Kit
Bund 3.5x4.5	3.5 x 4.5 x 0.25m	0.8 x 0.15 x 0.6m	4,000L	-20 °C to +80 °C	Easy Carry Bag	Polythene Liner, Ground Mat, Protective Mat, Overflow Control Kit

# POLYPROPYLENE COMPATIBILITY CHART

Acetaldehyde	•	○	Castor Oil	•	○
Acetic Acid		○	Chloracetic Acid		○
Acetic Acid Amyl Ester	•	○	Chlorobenzene	•	○
Acetic Anhydride	•	○	Chlorine	•	○
Acetone	•	○	Chlorine Soda		○
Acetyl Chloride	•	○	Chloroform	•	○
Acrolein		○	Chlorosulphuric Acid		○
Acrylic Acid		○	Chlorox (full bleach)		○
Acrylic Emulsions	•	○	Chromic Acid		○
Acrylonitrile	•	○	Citric Acid		○
Allyl Alcohol	•	○	Corn Oil	•	○
Aminobenzoic Acid		○	Cottonseed Oil	•	○
Ammonia (anhydrous)	•	○	Cresol	•	○
Ammonium Hydroxide	•	○	Cyclohexane	•	○
Amyl Acetate		○	Detergents	•	○
Amyl Alcohol	•	○	Dichlorbenzol	•	○
Aniline	•	○	Diethyl Amine	•	○
Aqua Regia	•	○	Diethyl Ether	•	○
Aviation Fuel	•	○	Di-Nitrobenzene	•	○
Benzene	•	○	Dioxan	•	○
Benzoic Ether	•	○	Disooctyl Phthalate	•	○
Benzonitrile	•	○	Ether	•	○
Benzyl Alcohol	•	○	Ethyl Acetate	•	○
Benzyl Chloride	•	○	Ethyl Alcohol	•	○
Boric Acid		○	Ethyl Chloride	•	○
Brake Fluid	•	○	Ethyl Ether	•	○
Bromine	•	○	Ethylene Glycol	•	○
Butyl Acetate	•	○	Ethyl Propionate	•	○
Butyl Alcohol	•	○	Formaldehyde	•	○
Butylamine	•	○	Formic Acid		○
Butyric Acid		○	Fuel Oil	•	○
Calcium Hydroxide	•	○	Galvanic Liquids	•	○
Carbolic Acid		○	Gearbox Oil	•	○
Carbon Disulphide	•	○	Glacial Acetic Acid	•	○
Carbon Tetrachloride	•	○	Glycerol	•	○



	Maintenance	•	Oil-Only	◦	Chemical	◦
Heptane	•	◦	◦		Petroleum Ether	• ◦ ◦
Hexane	•	◦	◦		Phenol	• ◦ ◦
Hydrazine	•		◦		Phenyl Formic Acid	◦ ◦ ◦
Hydrochloric Acid	•		◦		Phosphoric Acid	◦ ◦ ◦
Hydrofluoric Acid	•		◦		Potassium Hydroxide	◦ ◦ ◦
Hydrogen Cyanide	•	◦	◦		Propanol	• ◦ ◦
Hydrogen Peroxide	•		◦		Propionic Acid	• ◦ ◦
Isobutyl Alcohol	•	◦	◦		Propyl Alcohol	• ◦ ◦
Isobutyric Acid	•	◦	◦		Propylene Glycol	• ◦ ◦
Isopropyl Acetate	•	◦	◦		Quinoline	• ◦ ◦
Isopropyl Alcohol	•	◦	◦		Resorcinol	• ◦ ◦
Isobutyric Acid	•	◦	◦		Saccharose	• ◦ ◦
Isopropyl Acetate	•	◦	◦		Salt Solutions (metallic)	• ◦ ◦
Isopropyl Alcohol	•	◦	◦		Silicone Oil	• ◦ ◦
Kerosene	•	◦	◦		Silver Nitrate	• ◦ ◦
Keytones	•	◦	◦		Soap Solutions	• ◦ ◦
Linseed Oil	•	◦	◦		Sodium Bicarbonate	• ◦ ◦
Lubricating Oil	•	◦	◦		Sodium Chloride	• ◦ ◦
Magnesium Oxide Hydrate	•		◦		Sodium Hydroxide	• ◦ ◦
Methyl Alcohol	•	◦	◦		Sodium Nitrate	• ◦ ◦
Methyl Chloride	•	◦	◦		Stannic Chloride	• ◦ ◦
Methyl Ether	•	◦	◦		Starch	• ◦ ◦
Methyle Ethyl Ketone	•	◦	◦		Styrene	• ◦ ◦
Methylmethacrylate	•	◦	◦		Sucrose	• ◦ ◦
Methyl Propionate	•	◦	◦		Sulphuric Acid	◦ ◦ ◦
Milk	•		◦		Synthetic Motor Oil	• ◦ ◦
Mineral Oil	•	◦	◦		Tannic Acid	◦ ◦ ◦
Mineral Spirits	•	◦	◦		Tin Chloride	• ◦ ◦
Motor Oil	•	◦	◦		Toluene	• ◦ ◦
Naphtalene	•	◦	◦		Transformer Oil	• ◦ ◦
Nitric Acid	•		◦		Trichlorethylene	• ◦ ◦
Nitrobenzene Acid			◦		Triethylene Glycol	• ◦ ◦
Nitrobenzol	•		◦		Turpentine	• ◦ ◦
Nitrotoluen	•	◦	◦		Urine	• ◦ ◦
Octane	•	◦	◦		Vinegar	• ◦ ◦
Oleic Acid	•	◦	◦		Vinyl Acetate	• ◦ ◦
Olive Oil	•	◦			Water	
Paraffin	•	◦			Xylene	
Perchlorethylene	•	◦				

This information is provided as a guide only. No claims or warranties are expressed or implied as to the absolute accuracy of the data supplied. In all cases it is assumed chemicals in question are at ambient temperatures and pressure and are used in basic state, not in combination or mixtures. Small test sampling by users is always recommended to ensure safe application.

For more information on the full Lubetech offering visit [www.lubetech.co.uk](http://www.lubetech.co.uk) or contact your Lubetech representative for a copy of the full catalogue.



**LUBETECH**

Unit 4, Wellington Park  
Hedge End, Southampton  
Hampshire  
SO30 2QU  
UNITED KINGDOM

**T:** +44 (0) 2380 274 123

**F:** +44 (0) 2380 262 708

**E:** [sales@lubetech.co.uk](mailto:sales@lubetech.co.uk)

Lubetech is an environmental company, a leading manufacturer with a Global reach. Although our business is about protecting the environment, we remain very much a people-based organisation who care about protecting the environment for future generations. As world leaders in spill product development we design with the head, but we innovate from the heart. Customers see, touch and benefit from those technical advances every day. Please note that all pictures are for example only and actual contents may differ.