



SMALL SHIPS TALL SHIPS ALL SHIPS

DAMEN



THE DAMEN FAMILY

SHIPBUILDERS SINCE 1927

KOMMER DAMEN CHAIRMAN OF THE BOARD

Welcome to Damen. When putting together a book such as this, one can only be reminded of the many milestones lining the route to where we are today. When my father and uncle opened our first shipyard back in 1927, Damen was a relatively small enterprise. Things have certainly changed since then. We now have yards located all over the world; all the better to serve our customers wherever they are.

We have experienced our share of challenges along the way, but, thankfully we have been able to grow from our experiences. The success of the standardised shipbuilding concept has certainly helped us become the company you see today.

Another key feature is undoubtedly our dedicated people, always willing to go the extra mile in getting the job done to the very best of their collective ability.

But perhaps the most important element in our success is our customers. Over the years it has been a pleasure to work with each and every one of them, large and small. The feedback they have given us has been invaluable, enabling us to develop our portfolio exactly the way they need it to be.

ARNOUT DAMEN CHIEF COMMERCIAL OFFICER

Our challenge for today is to maintain our position at the forefront of maritime innovation in a rapidly changing world. We need to fix our focus on such things as the increasing pace of digitisation and the ongoing drive towards sustainability.

Listening to our customers and working closely with leading research institutes, suppliers and environmental interest groups, our dedicated R&D team is leading the way in developing answers to these needs, often before they arise. Examples include hybrid, electrical and LNG propulsion, ballast water treatment systems, as well as fuel-saving air lubrication systems.

We know that we cannot afford to allow our successes of yesterday to turn into complacency. It is critical that we continue to innovate, for us and for you, all the while maintaining the low total cost of ownership that is synonymous with Damen. I, like the whole Damen team, am very much looking forward to meeting the challenge that lies ahead and to delivering the products and services of tomorrow's maritime world.







Damen started out in 1927, a family-owned company amongst the shipbuilding community on the River Merwede in the Netherlands.

Today, we are still there on the same river banks, still a family company. With over 30 yards and Service Hubs all over the world, however, our focus is global.

We are well-known for our unique newbuild philosophy; the construction of standardised vessels for stock. For our clients this means rapid delivery of their asset. And, with R&D undertaken over successive generations of series production, they can count not just on continual evolution, but on reliable performance.

The commonality and reliability of our portfolio equals reduced maintenance requirements, leading to maximum vessel uptime, resulting in the lowest possible total cost of ownership over the vessel's lifecycle.

We take pride in this and make sure the same reliability and craftsmanship is applied also to our extensive range of marine components and the ship repair and conversion services that we deliver.

STANDARDISED DESIGNS

PROVEN TECHNOLOGY

VESSELS ON STOCK

SHORT DELIVERY TIMES

HIGH RESALE VALUE

GUARANTEED PERFORMANCE

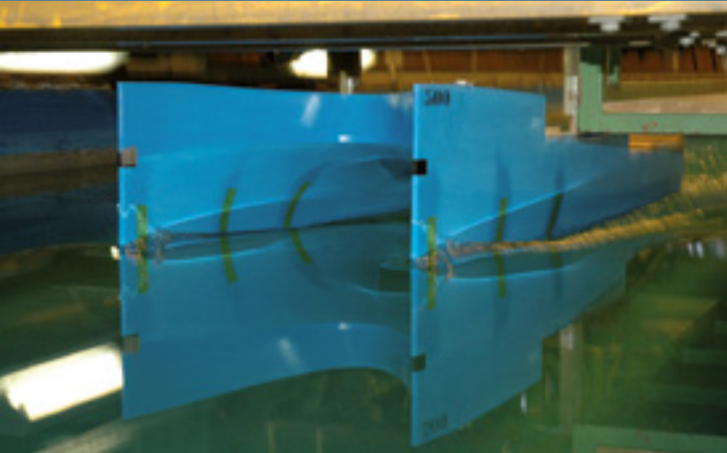
PROUD TO OFFER YOU THE BEST SOLUTION

WORLDWIDE NETWORK

LOCAL PRESENCE

INTERCHANGEABILITY

OF SPARES AND EQUIPMENT



OUR CORE VALUES

It is always our aim to do the very best that is possible; to be merely sufficient is insufficient. This philosophy runs through everything we do. Our goal of exceeding expectations extends beyond the delivery of services and products, to cover matters of quality, sustainability and safety.

PASSION AND PRIDE

It's easy to spot a Damen person. It's not only about the skills and knowledge they have gathered over many years of experience, it's more than that. You can tell a Damen person by the passion and the pride with which they go about delivering our solutions to you. In their attitude lies the true spirit of shipbuilding. Damen people are true craftsmen.

A FUTURE WITHOUT LIMITATION

Damen has a long history of entrepreneurial thought and innovation. With a keen focus on continual R&D, close relationships with leading research institutes and an open ear to our clients, we intend to keep it that way.

COOPERATIVE EVOLUTION

At Damen we make time to listen to our clients. Our open, collaborative approach has been a key driver of our product portfolio's evolution. Exceeding your expectations is our most important goal; after all, it's your future we're building.

GUTS & CREATIVITY

Having been around for almost a century, we've seen quite some changes in the maritime world – as well as initiating a few ourselves. Responding to these shifts has helped us to develop a versatile, flexible approach. Standardisation does not mean that all vessels are built the same; it's crucial that your Damen boat does what you want it to do.

READY WHEN YOU ARE

It's always been about reliability. From the start we wanted to provide our customers, not just with a ship, but with confidence. It was this that led to the standardised shipbuilding concept. In today's maritime world, with ever increasing requirements for comfort and safety, reliability is crucial, which is why it remains at the heart of our philosophy.



MULTRATUG 31

TERN
ZEN



IMO
9793155

SWL 50 T

INNOVATION

Innovation is in Damen's DNA. The standardised shipbuilding concept and the Sea Axe Hull are just two examples of our contribution to the development of the maritime industry. Innovation remains a key focus in all that we do.

RESEARCH

The standardised shipbuilding concept has significant implications for Damen's R&D activities. Anticipating market needs in the development of standard vessels facilitates R&D to implement state-of-the-art features within Damen's new designs. Building series of vessels has enabled Damen to develop extensive R&D programmes that ensure continual knowledge and product portfolio evolution and enable the adoption of robust and reliable breakthrough technologies.

THE VESSEL FACTORY

At Damen shipyards all over the world, the standardisation process comes into action with the production of tugs. State-of-the-art equipment and facilities are applied to the construction of proven, reliable vessels in the fastest possible timeframe.

MODULARISATION & ONE-OFFS

Standardisation does not imply a set approach with no flexibility. Damen is also experienced in the production of custom one-off vessels. Additionally, an extremely wide range of modular options is available for the standardised ship portfolio, ensuring vessel suitability whatever the task.



THE DAMEN STANDARD

Damen is internationally renowned for its unique shipbuilding philosophy. The Damen Standard is about providing clients with the fastest possible delivery of proven, reliable technology.

The benefits of this approach are wide and include minimal maintenance and low total cost of ownership.



COMPLIANT BEYOND DUTY

Damen is committed to compliance. Our compliance procedures and Code of Conduct guide us in all that we do. Our results serve to demonstrate our desire to get things right – first time, every time – and showcase our performance and that of our products, for all to see.

SMART SUSTAINABILITY

Aware our products carry a potential to impact the environment, we do everything we can to minimise this. Environmental sustainability is a primary focus of our R&D activities. A number of our products fall within the range of our dedicated Damen Green Solutions business unit.

CLEAN AND GREEN

In line with the long-term view we take, Damen has made concerted efforts towards making its workplaces clean and green. Investment in modern equipment, a mindful approach to energy consumption and a responsible use of cleanly produced electricity are just a few examples of the steps we are taking in this direction.

SAFE PLACE TO WORK

Our commitment to safety is not only applied on board a Damen vessel, it is an important part of our workplace philosophy. Close attention is paid to equipment, workplace layout, the logistical flow of operations and the maintenance of best practice at all times.

CODE OF CONDUCT

Not wanting to leave things to chance, we have developed a code of conduct, setting out in detail the steps we take to maintain compliant behaviour in all our global operations. The code stipulates the behaviour demanded when working with Damen; as an employee and as a supplier.





DESIGN

Damen vessels are developed in close cooperation with our clients. We are always listening to their feedback in order to incorporate their ideas into the next generation of our vessels.

NEWBUILD

Since the beginning, we have built over 6,000 vessels at our yards and the yards of our partners all over the world. As well as proven designs from our portfolio, this has included many examples of custom vessels, tailored to specific client requirements.

SHIPREPAIR & CONVERSION

With a network of repair yards located strategically around the world, Damen Shiprepair & Conversion (DSC) offers a comprehensive range of maintenance, repair, refit, conversion, and decommissioning/disposal services. Additionally, DSC offers flexible harbour and voyage repair options, to assist you wherever you are in the world.

COMPONENTS

Damen Marine Components (DMC) supplies a wide range of marine components, including nozzles, rudders, steering systems, gears, stern tubes and stem boxes. DMC operates from locations in the Netherlands, Poland and China.

SERVICES

Damen offers a wide-ranging portfolio of customer support services, covering the vessel's complete lifecycle. From financing at start-up, through construction, maintenance, 24/7 support, right through to recycling at end of life.



COMPLETE LIFECYCLE

Wherever there's water, there's Damen. It's not just words, it's our business model. With multi-market operation we apply our values of quality craftsmanship, proven technology and low total cost of ownership across the entire maritime spectrum.



OPERATING GLOBALLY

Damen has grown from a single shipyard on the banks of the River Merwede in the Netherlands, into a truly global company. From the beginning, we have believed that to care for our clients, we must be close to them. This philosophy has led us to expand internationally. Today, Damen vessels can be found operating throughout the world – and so can Damen.

ACTING LOCALLY

With Damen Technical Cooperation (DTC), you can build your Damen vessel at a yard of your choice, anywhere in the world. DTC can provide designs and licences, materials packages and building support, either individually or in combination.

JOINT VENTURES

In seeking to be close to our clients, Damen works in close collaboration with partners in key locations. Working together with local industry, often in joint ventures, we aim to provide a consistently high level of service wherever we operate.

9,000 EMPLOYEES

Across all of its locations, Damen has over 9,000 employees. Given the diversity of the Damen product portfolio, the work can be challenging. However, it is also fun, with a lot of freedom, responsibility and opportunities for both personal and career development.

FOUNDED IN THE NETHERLANDS

Founded in 1927 in Hardinxveld in the Netherlands' province of South Holland, Damen is a true Dutch company at heart. The values we started out with – reliability, quality craftsmanship, value for money and a close interface with customers – remain a strong part of our culture today; a culture that we have taken to the world. Damen operates over 30 newbuild and repair yards, plus Service Hubs, sales offices and marine components facilities in eighteen countries across six continents.



● Damen yard / Service Hub ●/ Damen Business Cooperation ● DTC yard



FROM LICENCES TO TURN-KEY PROJECTS

Whether you are looking for a new design or something from our portfolio, our in-house engineers stand ready to assist. We cover everything from the provision of the licence, or delivery of basic design alone, to a comprehensive package of support spanning the entire building process.

DAMEN CIVIL

Damen Civil covers the interface between ship and shore. Our scope includes the entire construction or upgrade process, from concept delivery to overseeing construction, including provision of quality, locally sourced materials.

LOCAL CONSTRUCTION

There are numerous benefits to the Damen Technical Cooperation (DTC). Sometimes our clients need to get their vessels to remote, inaccessible locations. At other times, import restrictions make it necessary to build a vessel at a specified location. Whatever the reason, DTC gives you the flexibility to get the job done to a high standard at a location of your choosing.

KNOWLEDGE TRANSFER

DTC is much more than simply building a ship at a non-Damen location; It's a knowledge transfer process that brings considerable investment to the area in which the project is taking place. As well as training the local workforce, DTC projects source materials locally wherever possible.

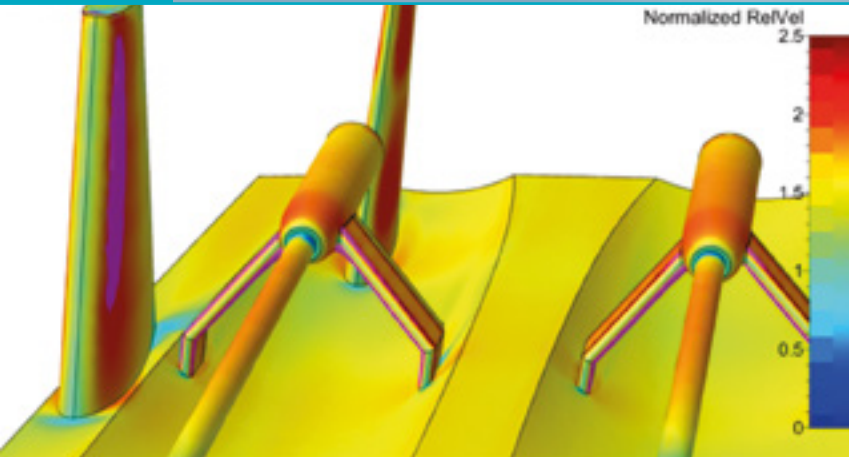
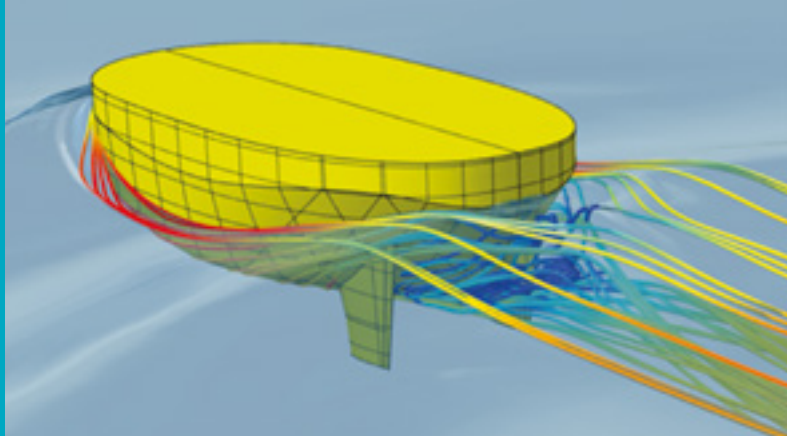
EXTREME FLEXIBILITY

With DTC you can build your vessel anywhere on the planet. Our engineers are on hand to assist you as much as you require throughout the process, thus ensuring the vessel remains of the highest possible quality.



DAMEN TECHNICAL COOPERATION

With the Damen Technical Cooperation (DTC) you can build your Damen vessel locally, at the yard of your choice. DTC will provide you with everything you need to build any vessel from our portfolio, including designs, licences and materials. If required, we can adapt your chosen yard for the project and provide construction support at any stage in the process.



RESEARCH & DEVELOPMENT

Damen has developed extensive R&D programmes leading to multiple ground-breaking innovations. We are committed to the continuous improvement of our products and production methods with the objective of reducing the environmental impact of the product lifecycle. Damen R&D also contributes greatly to the digitisation of Damen products and services by supporting vessel connectivity.

HYDROMECHANICS

Our research aims to improve the performance, operability, safety and efficiency of our vessels. Our focus is on resistance, propulsion, seakeeping, manoeuvrability and interaction of vessels.

STRUCTURES & MATERIALS

Our structures and materials research focuses on selecting the right material, production method and structural design for each application.

MECHANICS & SYSTEMS

Extensive knowledge of mechanical components and ship systems combined with a systems engineering approach and extensive simulation capabilities ensures the best possible integration, configuration and, ultimately, performance.

ELECTRIC & AUTOMATION

Damen analyses the ways in which the various electrical systems on board work together. The aim of this is to create an 'optimal system of systems'.

NOISE & VIBRATION

The minimisation of noise and vibration is critical in meeting today's requirements for safety, comfort and environmental performance. Damen is one of very few shipyards to perform its own validation measurements with its own Class approved system.

MARKET-FOCUSED PROGRAMMES

Damen has specialised programmes to cater to the particular needs of the dredging and naval sectors. Our extensive knowledge of sand-water mixture behaviour makes our research department one of the world's leading designers of dredge pumps and other dredging equipment. Being one of the key players in the Dutch naval shipbuilding cluster, Damen Schelde Naval Shipbuilding aims its R&D efforts at developing specific high-end ships for navies around the world.





MARKETS

Damen is active across the entire spectrum of maritime industries. From harbours and terminals to offshore support, from dredging to renewable energy and from superyachts to defence and security.



A SOLUTION FOR EVERY SITUATION

Within each of the sectors in which we operate, Damen strives to deliver flexible, versatile vessels to cater for the diverse requirements of our clients. This versatility applies also to our standardised vessel portfolio. Through the application of a range of proven, modular solutions we are able to deliver you a vessel that does exactly what you need it to do.



ENGINEERING

Whether designing cutting-edge new vessels or improving our tried and tested existing product range, Damen's dedicated team of more than 1,000 engineers strives for progress and the highest possible quality.



MATERIALS

We consistently apply the highest quality of materials to the vessels we build, whether building in steel, aluminium or composite. Together with our designs and generations of R&D, the high standard of materials we use provides the foundation for the quality of our vessels.

Damen has been building ships since 1927, when it first started in the Netherlands. Today, the Damen Shipyards Group operates shipyards all over the world and has delivered over 6,000 vessels. In the early 1970s, Kommer Damen introduced the Damen standardised shipbuilding concept.

The unique approach to shipbuilding practiced by Damen provides clients with the fastest possible delivery of proven, reliable vessels at competitive prices.

GLOBAL COVERAGE

From humble beginnings in the Netherlands, Damen now operates shipyards all over the world, ensuring that, wherever our clients are, we are always close by.

BUILDING ON STOCK

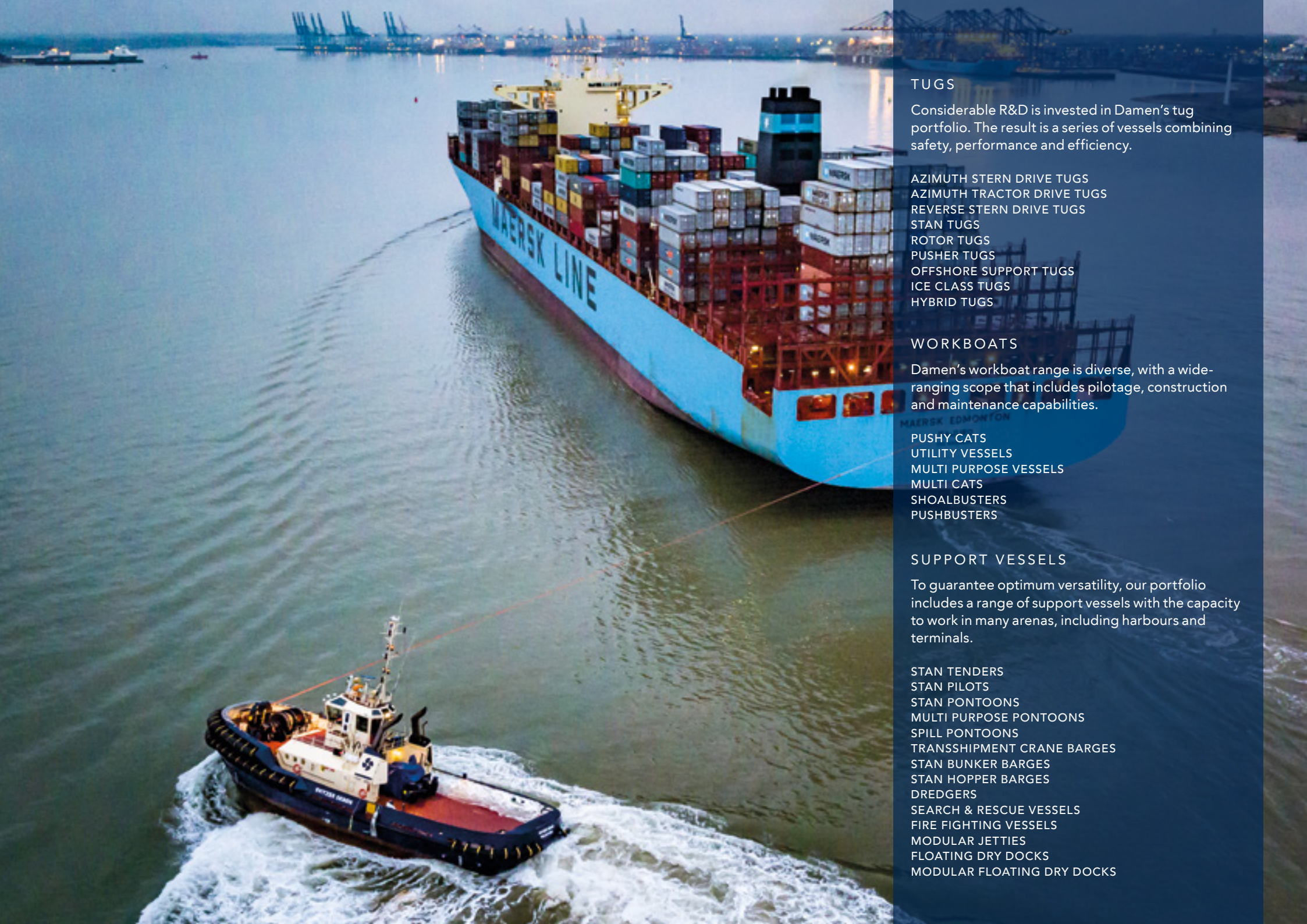
Building standardised vessels in series enables Damen to keep its products in stock. For a client this means they can take delivery of their new vessel in record time.

SALES NETWORK

Like our clients, our sales network is international. From our headquarters in the Netherlands, our sales teams cover the entire globe. Additionally, we operate regional sales offices in key locations throughout the world.



NEWBUILD



TUGS

Considerable R&D is invested in Damen's tug portfolio. The result is a series of vessels combining safety, performance and efficiency.

- AZIMUTH STERN DRIVE TUGS
- AZIMUTH TRACTOR DRIVE TUGS
- REVERSE STERN DRIVE TUGS
- STAN TUGS
- ROTOR TUGS
- PUSHER TUGS
- OFFSHORE SUPPORT TUGS
- ICE CLASS TUGS
- HYBRID TUGS

WORKBOATS

Damen's workboat range is diverse, with a wide-ranging scope that includes pilotage, construction and maintenance capabilities.

- PUSHY CATS
- UTILITY VESSELS
- MULTI PURPOSE VESSELS
- MULTI CATS
- SHOALBUSTERS
- PUSHBUSTERS

SUPPORT VESSELS

To guarantee optimum versatility, our portfolio includes a range of support vessels with the capacity to work in many arenas, including harbours and terminals.

- STAN TENDERS
- STAN PILOTS
- STAN PONTOONS
- MULTI PURPOSE PONTOONS
- SPILL PONTOONS
- TRANSSHIPMENT CRANE BARGES
- STAN BUNKER BARGES
- STAN HOPPER BARGES
- DREDGERS
- SEARCH & RESCUE VESSELS
- FIRE FIGHTING VESSELS
- MODULAR JETTIES
- FLOATING DRY DOCKS
- MODULAR FLOATING DRY DOCKS



Our Harbour and Terminal Series can handle it all – whilst remaining productive, safe and efficient. Spanning towage and transportation, the series is Damen at its most diverse, featuring vessels as varied as tugs and pontoons, dredgers and Multi Cats.

HARBOUR & TERMINAL

KEEPING THINGS ON THE MOVE



SURVEY & EXPLORATION

A sophisticated range of vessels with the capabilities to perform a range of surveys, including seismic, hydrographic and oceanographic.

RESEARCH VESSELS

SEISMIC RESEARCH SUPPORT VESSELS

CABLE LAYING VESSELS

CONSTRUCTION

A diverse array of vessel types offering solutions for situations including subsea construction, towage, crew supply and accommodation.

UTILITY VESSELS

ANCHOR HANDLING TUG SUPPLIERS

PLATFORM SUPPLY VESSELS

INSPECTION, REPAIR & MAINTENANCE VESSELS

CONSTRUCTION SUPPORT VESSELS

WALK-TO-WORK VESSELS

PIPE LAYING VESSELS

JACK UP UNITS (IN COOPERATION WITH GUSTOMSC)

STAN PONTOONS

FLOATING CRANES

PRODUCTION

To support the goal of any energy project, Damen's portfolio provides a multi-faceted selection of vessels to support everything from well stimulation to accommodation.

FAST CREW SUPPLIERS

INSPECTION, REPAIR & MAINTENANCE VESSELS

BUOY LAYING VESSELS

OIL SPILL RESPONSE VESSELS

WELL STIMULATION VESSELS

OFFSHORE ACCOMMODATION VESSELS

SAFETY STANDBY VESSELS

PONTOONS & BARGES

DECOMMISSIONING

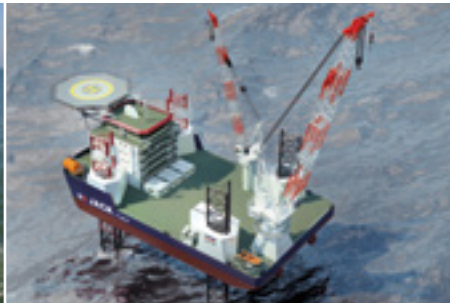
The Damen Decommissioning Series specialises in three core areas – topside decommissioning, platform removal and subsea cleaning.





Damen's comprehensive Offshore Oil & Gas portfolio has a strong focus on both safety and performance. We have developed our offshore-related product range in close cooperation with our clients and knowledge partners within the industry. The result is an offering covering everything from survey to construction, through production and maintenance to decommissioning.

SOPHISTICATED SAFETY
OFFSHORE OIL & GAS
RELIABILITY AND PERFORMANCE





INSTALLATION

The Damen portfolio's installation vessel range includes workboats to support construction activities and crew transportation vessels to get personnel on-site and ensure their comfort for maximum workability.

- WALK-TO-WORK VESSELS
- UTILITY VESSELS
- ANCHOR HANDLING TUG SUPPLIERS
- FAST CREW SUPPLIERS
- RESEARCH VESSELS
- SEISMIC RESEARCH VESSELS
- JACK UP UNITS (IN COOPERATION WITH GUSTOMSC)
- OFFSHORE ACCOMMODATION VESSELS
- CABLE LAYING VESSELS
- OFFSHORE CARRIERS
- MULTI CATS
- PONTOONS
- OFFSHORE FREIGHTERS
- SERVICE OPERATION VESSELS
- HEAVY LIFT VESSELS

MAINTENANCE

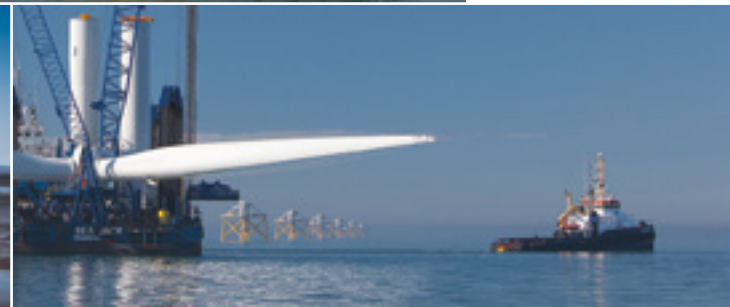
Once a wind farm is operational, keeping the energy flowing is essential. To that end, Damen offers a range of products to facilitate both scheduled and emergency maintenance requirements, swiftly and safely.

- FAST CREW SUPPLIERS
- UTILITY VESSELS
- WALK-TO-WORK VESSELS
- MULTI PURPOSE VESSELS
- MULTI CATS

SUPPORT

A selection of vessels to support wind farm operations, including versatile workboats.

- UTILITY VESSELS
- SHOALBUSTERS
- MULTI CATS
- PONTOONS & BARGES
- CRANE BARGES



As the world looks increasingly at renewable energy potential, offshore projects continue to have an important role. Damen's solutions, including those developed with partners, aim to cover the broad range of duties encountered in the offshore wind industry.

OFFSHORE WIND

SUSTAINABILITY AT SEA





COMBATANTS

Damen's combatant ships have proven themselves time and again in action with navies all over the world.

AIR DEFENCE & COMMAND FRIGATES
MULTI PURPOSE FRIGATES
SIGMA MULTI MISSION FRIGATES
SIGMA LIGHT FRIGATES AND CORVETTES
SIGMA FAST COMBATANTS
CROSSOVERS

PATROL VESSELS

The Damen patrol range covers everything from fisheries protection to piracy prevention.

OCEAN GOING PATROL VESSELS
OFFSHORE PATROL VESSELS
INSHORE PATROLS / STAN PATROLS
FAST CREW SUPPLIERS SECURITY
INTERCEPTORS
RIGID HULL INFLATABLE BOATS

AMPHIBIOUS SERIES

A bridge from naval to land operations, Damen's amphibious portfolio supports everything from military activity to disaster relief.

CUSTOM BUILT AMPHIBIOUS SHIPS
ENFORCER LANDING PLATFORM DOCKS
LANDING SHIPS
LANDING CRAFTS

AUXILIARIES

Defence and security is far more than combat alone. For that reason, Damen has developed a versatile series of auxiliary vessels.

CUSTOM BUILT NAVAL AUXILIARIES
JOINT SUPPORT SHIPS
LOGISTIC SUPPORT VESSELS
HYDROGRAPHIC SURVEY VESSELS
MULTI ROLE AUXILIARY VESSELS
MULTI ROLE AVIATION TRAINING VESSELS
SAIL TRAINING VESSELS
TUGS



Damen has a well-established reputation in the delivery of defence and security vessels. Damen Schelde Naval Shipbuilding (DSNS), for example, has over 140 years naval experience, resulting in more than 400 successful ship deliveries. The Damen Defence & Security portfolio offers vessels stretching from 7 to 200 metres and features exceptional examples of seakeeping, speed and reliability.

DEFENCE & SECURITY

PROTECTING SEAS AND SHORES



LUXURY YACHTING

Amels offers superyachts of the absolute highest quality and finish, both true one-off Full Custom yachts or yachts from the innovative Amels Limited Editions range with fast delivery and high customisation.

AMELS LIMITED EDITIONS
AMELS FULL CUSTOMS

REFIT AND MAINTENANCE

Amels offers bespoke service for an uninterrupted yachting experience anywhere in the world. The refit team maintains and updates both Amels and non-Amels yachts for their original owners as well as new owners.

AMELS REFITS

EXPEDITION YACHTING

Damen SeaXplorer is the world's first purpose-built Polar Code compliant range of luxury expedition yachts with the full capability to enjoy the world's most spectacular and remote destinations.

DAMEN SEAXPLORERS

SEAXPLORER

SUPPORT VESSELS

Superyacht owners take their vessels from the purpose-built Damen yacht support range all over the world to support their yachts – providing helicopter, dive, security and other tailor-made solutions.

DAMEN YACHT SUPPORTS

**YACHT
SUPPORT**





A part of Damen since 1991, pedigree yacht builder Amels has grown into the largest superyacht facility in the Netherlands, delivering almost 60 Amels yachts up to 83 metres in length. In addition, Damen meets the yachting market's growing demand for capability with crossover innovations that combine Damen's professional shipbuilding experience with Amels' luxury yachting expertise.

AMELS 

LUXURY EXPERIENCES
YACHTING
WITHOUT PARALLEL



DREDGERS

Damen's dredger range is diverse, from stationary modular dredgers to self-propelled Trailing Suction Hopper Dredgers, fit for both maintenance, marine aggregate and capital dredging projects.

The standard dredger range can be customised effortlessly using the wide scope of our available options.

CUTTER SUCTION DREDGERS
DOP DREDGERS
TRAILING SUCTION HOPPER DREDGERS
MARINE AGGREGATE DREDGERS
DREDGER CRANE BARGES

DREDGING SYSTEMS

Many in-house designed dredging components are available, either as such, or integrated in a fit-for-purpose dredging tool as a complete dredging system.

DOP PUMPS
TRAILING SUCTION PIPES
BOOSTER STATIONS
WATER INJECTION DREDGERS
DREDGE PUMPS
DREDGE VALVES
DREDGING COMPONENTS
DREDGING INSTRUMENTATION

SUPPORT VESSELS

Providing support to the dredging industry is in the DNA of Damen's workboat portfolio, stretching back to the earliest days of standardised shipbuilding.

SHOALBUSTERS
MULTI CATS
STAN TUGS
STAN PONTOONS
MODULAR PONTOONS
STAN TENDERS
PUSHBUSTERS
STAN HOPPER BARGES
SPLIT HOPPER BARGES





With its Dutch roots, Damen has a natural insight into water management. We put our considerable knowledge and experience to use designing and building robust dredgers and components for contractors all over the world. The Damen philosophy of standardisation is applied to ensure fast delivery of reliable technology.

AN INSTINCT FOR **DREDGING**





PASSENGERS

For people travelling on the waterways Damen offers a range of safe, comfortable ferries, water taxis and water buses.

- FERRIES
- FAST FERRIES
- FAST RIVER FERRIES
- WATER BUSES
- WATER TAXIS

PASSENGERS & VEHICLES

The portfolio features ferries from small to large that can also take cars and/or trucks.

- ROPAX FERRIES
- FAST ROPAX FERRIES
- MODULAR FERRIES
- ROAD FERRIES (DOUBLE ENDED)

SUPPORT

Besides ferries of all kinds, Damen can deliver jetties, dockings and link spans to fully optimise your public transport infrastructure.

- MODULAR JETTIES
- FLOATING DRY DOCKS
- MODULAR FLOATING DRY DOCKS
- LINK SPANS
- LANDING PLATFORMS
- MOORING PONTOONS



Damen public transport vessels are to be found in operation all over the world, in both urban and remote areas. The range covers the transportation of both people and vehicles and includes water taxis, water buses and ferries.

CONNECTING PEOPLE
PUBLIC TRANSPORT
IN COMFORT



EXPEDITION CRUISING

Serving the explorers of the world, Damen has developed a series of very capable Expedition Cruise Ships.

EXPEDITION CRUISE SHIPS

RIVER CRUISING

With locations along some of the major waterways of the world, Damen is well positioned to provide the best possible solutions for river cruising.

DAY CRUISE
RIVER CRUISE





Whether you are looking to sail along the banks of the Rhine or the Danube or to explore the Southern Ocean, Damen has the solution to get you safely and comfortably to your destination.

EXPLORE THE WORLD
SEA & RIVER CRUISING
SIT BACK AND RELAX





SEAGOING CARGO VESSELS

Our cargo vessel range can work in all kinds of waters and features capabilities for loading and unloading in restricted areas.

CONTAINER FEEDERS
COMBI COASTERS
COMBI FREIGHTERS
OFFSHORE FREIGHTERS
STAN LANDERS
RORO VESSELS
STAN PONTOONS

TANKERS

A range of tankers cover the transportation of diverse types of energy-related materials.

OIL TANKERS
SHALLOW DRAUGHT TANKERS
LIQUEFIED GAS CARRIERS
STAN TANKERS
BUNKER BARGES

SUPPORTING OFFSHORE ENERGY OPERATIONS

Many of the vessels in this section of our portfolio have oceangoing capabilities. Included in this are heavy-lift and other transportation vessels as well as those supporting offshore energy operations.

OFFSHORE CARRIERS
HEAVY LIFT VESSELS
SHOALBUSTERS
PONTOONS & BARGES



Decades of research and development investment have gone into the design of a comprehensive range of seagoing vessels that enjoy a reputation for flexibility, high quality, excellent loading, fuel efficiency and attractive pricing.

SEAGOING TRANSPORT

VERSATILITY ON THE WAVES





INLAND VESSELS

Damen offers a range of inland tankers. Amongst these is the EcoLiner, an LNG-powered vessel designed to offer fuel economy and reduce emissions.

ECOLINERS
DRY CARGO VESSELS
TANKERS

PUSHERS

Designed with the specific challenges of river and canal work in mind.

PUSHER TUGS
PUSHBUSTERS
MODULAR PUSHERS

INLAND TRANSPORT

Other vessels suited to the inland shipping sector include tugs, barges and the Shoalbuster.

STAN TUGS
SHOALBUSTERS
STAN PONTOONS
MODULAR PONTOONS
FLOATING DRY DOCKS
MODULAR FLOATING DRYDOCKS
MODULAR JETTIES
HOPPER BARGES
BUNKER BARGES
CRANE BARGES
TRANSSHIPMENT BARGES

INNOVATION

Our solutions in the inland shipping sector include a number of cutting-edge innovations.

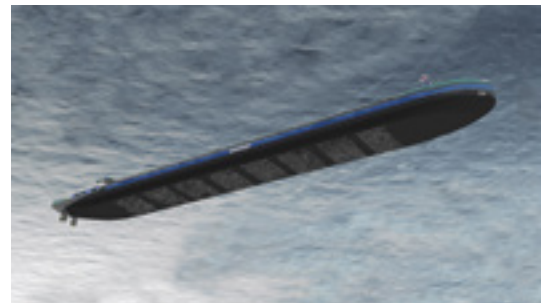
LG3 TANKERS
ACES AIR LUBRICATION



Concordia
DAMEN
SHIPBUILDING

Concordia Damen Shipbuilding builds inland tankers, tugs and pushers to the highest standards, using proven technology. We offer fast deliveries and a wide variety of specifications and sizes to suit every type and size of waterway. Our customers benefit from our knowledge of alternative fuels, low-emission propulsion systems and the patented Air Chamber Energy Saving Air Lubrication (ACES) ship type, that significantly reduce the total cost of ownership.

MARITIME CRAFTMANSHIP
INLAND SHIPPING
FOR THE HINTERLAND



STAN PONTOONS

Sturdy vessels built to proven designs for the toughest conditions and engineered to be loaded to the maximum. Plug & play options and standardised lengths per beam size.

STAN PONTOONS
ICE CLASS PONTOONS
SHALLOW DRAUGHT PONTOONS
MODULAR PONTOONS

CRANE BARGES

Tailor designed floating cranes to meet operational requirements.

TRANSSHIPMENT CRANE BARGES
HEAVY LIFT CRANE BARGES
DREDGER CRANE BARGES
CRAWLER CRANE BARGES
CUSTOM BUILT CRANE BARGES

CUSTOM BUILT PONTOONS AND BARGES

In close collaboration with clients and project partners we design pontoons and barges for special purposes to meet particular specifications.

ACCOMMODATION BARGES
MOORING PONTOONS
SPILL PONTOONS
WATER MAKER BARGES
MODULE OFFLOADING PONTOONS
SUBMERSIBLE BARGES
FLOATING DOCKS

HOPPER BARGES

A diverse range of box shaped Hopper Barges with prepared options, as well as Split Barges.

HOPPER BARGES
SPLIT BARGES

BUNKER BARGES

Barges for transport or storage of fuels, fresh water or other kinds of liquids.

BUNKER BARGES
STORAGE BARGES

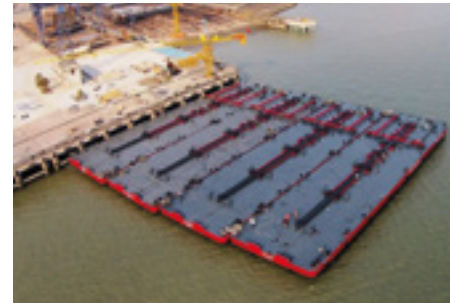




Damen offers a comprehensive range of pontoons and barges that enjoy a reputation for flexibility, high quality, excellent seakeeping and attractive pricing. As well as standard designs to facilitate speed of delivery, we also provide customised models to meet specific requirements. Our focus is the provision of the best possible solutions for our clients, whatever their needs.

PONTOONS & BARGES

ENGINEERED FUNCTIONALITY



FISHING VESSELS

A range of vessels covering a broad scope of fishing operations.

BEAM TRAWLERS
TWIN RIGGERS
FLY SHOOTERS
STERN TRAWLERS
SHRIMPERS
PURSE SEINERS
LONG LINERS
FACTORY TRAWLERS
KING CRAB FISHERS
FISH COLLECTING VESSELS

SHELL FISH DREDGERS

Especially designed for work in shallow waters, while maintaining excellent seakeeping behaviour.

MUSSEL DREDGERS
OYSTER DREDGERS
RAZOR SHELL DREDGERS

RESEARCH

Vessels to support and perform various research operations, including seismic, hydrographic, oceanographic and fishery surveys.

FISHERY RESEARCH VESSELS





To date, we have delivered over 200 fishing vessels. Damen's fishing portfolio is diverse, covering a wide range of applications and methods. Our vessels are developed in close cooperation with clients and designed to fish in the most economical and environmentally sustainable way possible.

BLENDING INNOVATION WITH TRADITION **FISHING**





FISH HANDLING OPERATIONS

Our portfolio includes vessel designs for the transport and treatment of fish.

LIVE FISH CARRIERS
UTILITY VESSELS
FISH HARVESTING VESSELS
STAN PONTOONS

INFRASTRUCTURE INSTALLATION, MAINTENANCE AND REMOVAL

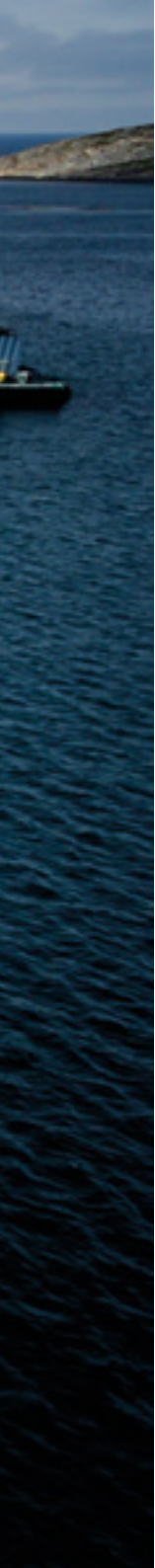
Damen's workboat heritage ensures our solutions for heavy duty and daily aquaculture operations are robust, safe and reliable, both inshore and offshore.

MULTI CATS
STAN PONTOONS
UTILITY VESSELS
STAN TUGS
PUSHY CATS
DOP PUMPS

SUPPORT AND TRANSPORT

A number of standard vessels from the Damen portfolio can offer support services such as feed supply, crew transport and towage.

FEED CARRIERS
COMBI FREIGHTERS
FAST CREW SUPPLIERS
STAN TUGS
STAN TENDERS
STAN PONTOONS
CRANE BARGES



The growth of the aquaculture industry is significant in many countries presently and looks set to continue into the future. Damen supports the safe, clean development of a reliable industry, both nearshore and offshore, with standard-setting solutions.

AQUACULTURE

FEEDING THE FUTURE





BALLAST WATER TREATMENT

Damen's ballast water treatment solutions include retrofit systems as well as the unique, award-winning port based system, InvaSave 300.

INVASAVE 300 RETROFIT SOLUTIONS

SO_x SCRUBBERS

Damen has a wealth of experience retrofitting scrubbers to vessels of all types and sizes. Our past projects have included a unique modular approach that dramatically reduces downtime of the vessel.

TIDAL ENERGY

The tidal energy sector is one that is up-and-coming. Damen has a number of relevant solutions for this young industry, including workboats and platforms for tidal turbines.

MODULAR TIDAL TURBINES

EMERGENCY RESPONSE

Safety in the workplace and care for the environment is of paramount importance. This is why Damen has developed a range of vessels to safeguard life and the environment at sea. Highly effective and economic propulsion systems are combined with dedicated equipment to ensure safety and rescue capabilities.

OIL SPILL RECOVERY VESSELS MULTI PURPOSE VESSELS BUOY LAYING VESSELS SAFETY STANDBY VESSELS WATER MAKING BARGES

SEARCH & RESCUE

Damen's experience in seakeeping performance is put to use in lightweight, manoeuvrable search and rescue vessels that can get quickly to the scene of emergency and take people to safety.

SEARCH & RESCUE VESSELS



Damen works with maritime authorities and vessel owners and operators to provide the products they need to safeguard the environment. We have a wide range of vessels on offer, covering fire fighting, pollution control, patrol activities and research duties. We are also experienced in ballast water management systems, both on board vessels and in ports.

ENVIRONMENTAL SAFETY & CONTROL

ENSURING SAFETY AT SEA





CIVIL CONSTRUCTIONS

Damen Civil is active in the development of new or existing shipyards and all kinds of berthing facilities for customers worldwide.

It is our aim to create the best possible shipyards, assisting our clients to improve their performance capabilities.

Close cooperation between Damen Civil and the customer during development, design and construction forms a long lasting relationship that is in the interests of both parties.

Damen Civil offers three products:

- Concepts & Consultancy: creating plans for every type of shipyard or berthing facility possible
- Materials & Equipment: delivery of all kinds of construction materials, tools and equipment needed at a shipyard facility
- Civil Works: helping to create customers' shipyards or berthing facilities

FLOATING DRYDOCKS
GRAVING DRYDOCKS
MARINE TRAVEL LIFTS
SLIPWAYS
SHIP LIFTS
TRANSFER AREAS
OUTFITTING QUAYS
JETTIES / FINGER PIERS
PRODUCTION AND REPAIR HALLS
WAREHOUSING AND WORKSHOPS
SHEDS AND STORAGES
OFFICES AND TRAINING CENTRES





Damen Civil provides a range of maritime construction solutions and services covering the interface between ship and shore. We combine the strength of global standards with local personnel and content. This philosophy of knowledge transfer results in practical solutions creating and expediting the development of local industry, skills and employment.

CIVIL

A BRIDGE FROM SHIP TO SHORE





SAIL TRAINING VESSELS

Steel clippers for sail training and ambassadorial duties.

STAD AMSTERDAM
SHABAB OMAN II

ICEBREAKER

Advancing scientific, strategic, environmental and economic interests for Australian Antarctic Division.

RSV NUYINA

MULTI PURPOSE PONTOON

Customised, semi-submersible load-handling solution.

TERRA MARIQUE

NUCLEAR CARGO VESSEL

Secure cargo transportation.

SIGRID

FISHERY INSPECTION AND SURVEILLANCE VESSEL

Protection for fishing stocks in Angolan territorial waters.

NZINGA MBANDI

MULTI BUSTER

An allround, flexible, stable and robust workboat for both offshore and inshore operations.

MULTI-ROLE AVIATION TRAINING VESSEL

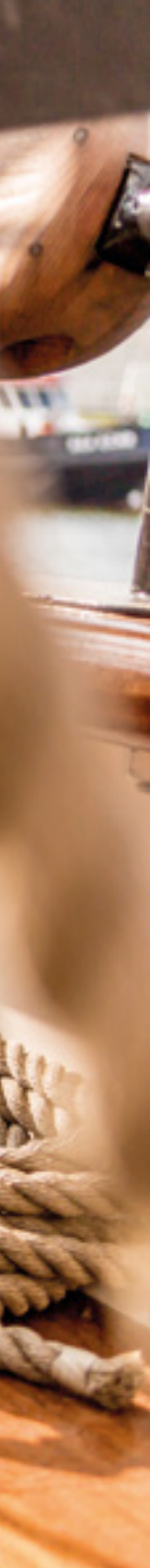
Diverse training and support duties for the Royal Australian Navy.

SYCAMORE

FIRE FIGHTING VESSEL

Special design for the canals and low bridges in Amsterdam, The Netherlands.

JAN VAN DER HEYDE IV



As well as being renowned for production of standardised vessels, Damen has an excellent track-record in the production of customised one off vessels, designed exactly to client specific requirements. With our experience across all maritime sectors, we offer the flexibility to meet your requirements. Whatever they may be.

SPECIALS

IN A CLASS OF THEIR OWN



MAIN NEWBUILD YARDS

DAMEN SHIPYARDS GORINCHEM / HEAD OFFICE



DAMEN SONG CAM SHIPYARD



AMELS



DAMEN SHIPYARDS CAPE TOWN



DAMEN YICHANG SHIPYARD



DAMEN SHIPYARDS ANTALYA

DAMEN DREDGING EQUIPMENT



ALBWARDY DAMEN



DAMEN SHIPYARDS SINGAPORE



DAMEN SHIPYARDS GALATI



DAMEN SCHELDE NAVAL SHIPBUILDING



Damen Shiprepair & Conversion (DSC) has years of experience in providing maintenance, repair, conversion and refit to vessels of almost every kind, all over the world, from its strategic yard locations and at sea or in port.

We carry out over 1,500 projects annually, applying the Damen core values of craftsmanship, flexibility, reliability, client focus and a desire to exceed all expectations.

OUR SERVICES

DSC yards offer ship owners a comprehensive range of services, from normal drydockings for scheduled maintenance or damage repair right up to extensive refit and conversion projects. Our dedicated sales team can assist you in preparing your specification.

ANYWHERE, ANYTIME

DSC operates sixteen shipyards all over the world. This includes yards in Europe as well as yards in the Americas, the Middle East and Asia. Our facilities vary in scope from those with full size drydocks and covered facilities, to smaller yards more practical for coastal and inland vessels.

ONE STOP SHOP

We are able to design, engineer, procure and execute all kinds of projects – from a small pipe repair on deck of a tug to the complete refit of a jack-up rig and everything in between.



SHIPREPAIR & CONVERSION



REPAIR

We understand that damage to a vessel is inconvenient and costly. That's why we ensure you of a quick, safe and reliable service to get you underway again as soon as possible.

We have extensive experience of every conceivable type of damage, whether it be caused by collision, flooding, fire or malfunctioning equipment.

MAINTENANCE

Maintenance is crucial in order to meet a vessel's operational requirements and comply with Classification rules and regulations. We are able to take on the most challenging projects in the shortest possible timeframe. Projects are planned within a fixed schedule, to the highest quality standards and according to budget.

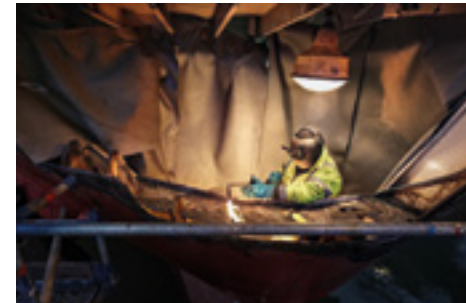
HARBOUR & VOYAGE REPAIR

Wherever you are, whenever you need us. Our mobile repair squad is there to serve you 24/7. We can cater for you at a non-Damen location or during voyage. With a single point of contact our on-site voyage repairs are fast, cost-effective and meet all regulatory requirements.



Our reputation for repair and maintenance is based on delivering short lead times, high quality work and minimal vessel downtime. We are well-versed in the maintenance and repair of everything from small vessels to offshore constructions. There is always a DSC yard nearby and a drydock available for your vessel. Alternatively, our mobile repair squad comes to you.

ANYWHERE
REPAIR & MAINTENANCE
ANYTIME





CONVERSION

We can provide you with reliable, efficient and innovative conversion services. Through our experience and passion we have successfully converted countless vessels. Benefit from our lessons learned – from the conversion of a container carrier into a wind farm construction vessel to the conversion of a jack-up drilling rig into an accommodation platform.

REFIT

Every ship ages. A refit can turn back the hands of time and give you a completely refreshed vessel in compliance with the latest regulations and equipped with the latest innovations. We have a long track record of successful refits, lifetime extensions and rejuvenation programmes.

GREEN SOLUTIONS

We offer efficient one-stop-shop green solutions for the maritime industry. From design and engineering to execution, we are your single service provider for ballast water treatment, emission scrubbers and LNG propulsion. We've got it covered. Our clients ask for compliant operation and support – so that's what we deliver. Let's face the future together.

DECOMMISSIONING/DISPOSAL

DSC is your secure, reliable partner in the dismantling and recycling of vessels and large offshore structures. Benefit from the knowledge we can offer at our yard in the Rotterdam Botlek area, including high-standard Health, Safety, Environment and Quality performance for decommissioning of fixed and floating offshore structures and ship recycling works. The yard holds the official EU and Dutch accreditation of Ship Recycling Yard. Additionally, we are able to handle NORM (Naturally Occurring Radioactive Material).

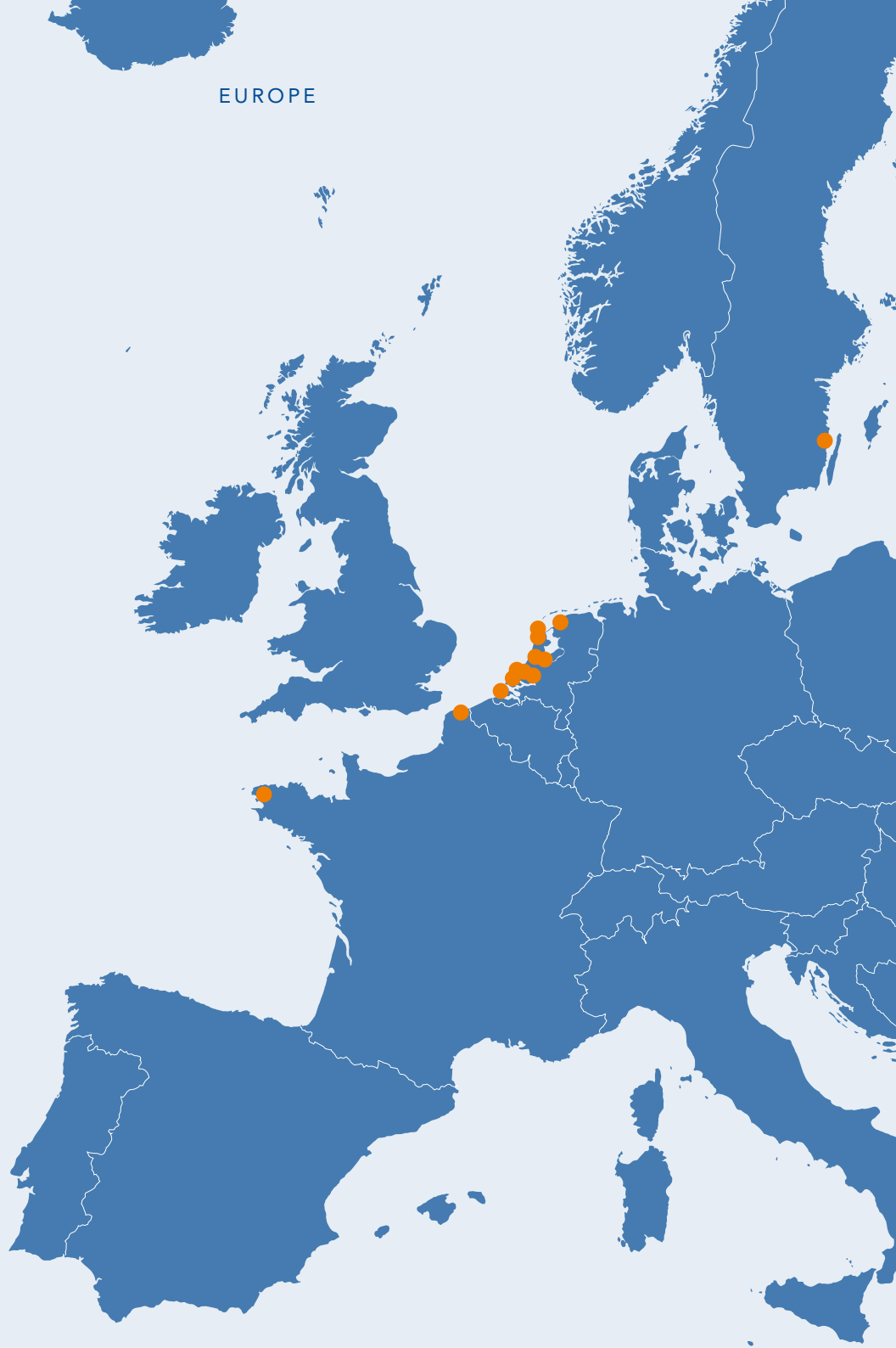


We have years of experience, highly skilled project teams and extensive facilities for carrying out the design, engineering and execution of all kinds of conversion and refit projects. From container ships to FPSOs and from dredgers to offshore support vessels, our DSC yards are there to carry out the most complex projects.

BRINGING NEW LIFE AND PURPOSE TO YOUR VESSEL **CONVERSION, REFIT & DECOMMISSIONING**



EUROPE



EUROPE

THE NETHERLANDS

- DAMEN SHIPREPAIR ROTTERDAM
- DAMEN VEROLME ROTTERDAM
- DAMEN SHIPREPAIR VLISSINGEN
- DAMEN SHIPREPAIR AMSTERDAM
- DAMEN SHIPREPAIR VAN BRINK ROTTERDAM
- DAMEN SHIPYARDS DEN HELDER
- DAMEN SHIPYARDS TEXEL
- DAMEN SHIPREPAIR HARLINGEN
- DAMEN SHIPREPAIR ORANJEWERF
- DAMEN MAASKANT SHIPYARDS STELLENDAM

FRANCE

- DAMEN SHIPREPAIR BREST
- DAMEN SHIPREPAIR DUNKERQUE

SWEDEN

- DAMEN OSKARSHAMNSVARVET

CARIBBEAN

CURAÇAO

- DAMEN SHIPREPAIR CURAÇAO

MIDDLE EAST

UNITED ARAB EMIRATES

- ALBWARDY DAMEN

ASIA

SINGAPORE

- DAMEN SHIPYARDS SINGAPORE

WORLDWIDE

- DAMEN SHIPREPAIR HARBOUR & VOYAGE

CARIBBEAN



MIDDLE EAST



ASIA





Damen Shiprepair & Conversion has grown into a separate repair & conversion division serving you from sixteen shipyards in three continents and through our harbour & voyage team worldwide. Each DSC yard comes with its own unique history and people, however they all provide the same level of quality and reliability.

EVERY MARKET SHIPREPAIR & CONVERSION ANY VESSEL



> 9,850 m
berths



13
floating docks
up to 229 m



18
graving docks
up to 420 m



2
covered
graving docks
up to 215 m
aircraft up to 51 m



4
slipways
up to 100 m



1
covered slipway
up to 40 m
aircraft up to
9.50 m



4
covered repair
facilities



1
repair platform



5
synchrolifts
up to 6,000 t



cranes
up to 150 t
lifting capacity



floating crane



mobile crane
up to 100 t
lifting capacity

MAIN SHIPREPAIR YARDS

DAMEN SHIPREPAIR ROTTERDAM / DSC HEAD OFFICE



DAMEN VEROLME ROTTERDAM



ALWARDY DAMEN



DAMEN SHIPREPAIR AMSTERDAM



DAMEN SHIPREPAIR DUNKERQUE



DAMEN OSKARSHAMNSVARVET

DAMEN SHIPYARDS DEN HELDER



DAMEN MAASKANT SHIPYARDS STELLENDAM



DAMEN SHIPREPAIR VLISSINGEN



DAMEN SHIPREPAIR HARLINGEN



DAMEN SHIPREPAIR ORANJEWERF



DAMEN SHIPREPAIR BREST



DAMEN SHIPREPAIR CURAÇAO



RUDDERS

DMC's product range incorporates the Van der Velden Marine Systems range of rudders. Recognised as being state-of-the-art, the rudders, from 1m² to 100m², are tailor designed, engineered and manufactured to the highest possible standards.



STEERING GEAR

The Van der Velden portfolio of steering gear offers superior course stability and covers everything from ram-type to rotary vane in a wide range of torques and steering angles.



WINCHES

Often acting in concert with other members of the Damen Shipyards Group, DMC is continually developing new winches. A notable part of the product portfolio is the Render Recovery Winch installed on board Damen ASD Tugs.



ANCHORS & CHAINS

Damen Anchor & Chain Factory (AKF), situated on Damen Shiprepair Rotterdam's premises in the Port of Rotterdam, supplies a range of new anchors and chains, as well as carrying out repairs and testing services. AKF has a well-established reputation for ready availability all over the world and for consistent high quality.

Damen Marine Components (DMC) supplies a comprehensive range of propeller nozzles, including the Optima, with its improved forward and reverse performance.

Additionally, the product range includes bow thruster tunnels, rudders, stern tubes and stem boxes, all tailored to the requirements of individual vessels.

From its sites in the Netherlands, Poland and China, DMC is able to respond quickly to its clients everywhere.

Our integrated manoeuvring systems are designed, engineered and manufactured to the highest possible standards and meet all Class Society requirements. Reliability, ease of maintenance, safety and a long lifespan are key drivers throughout the design, manufacturing and installation processes. Customers and yards alike benefit from an easy to install and integrated solution.

The extensive construction halls of DMC provide potential for production of all sorts of steel constructions. Additional to its standard manufacturing portfolio, DMC also produces according to drawings of clients or assists in creating new designs.

NOZZLES

The single-weld nozzle spinning method used in the DMC production plants in Poland and China creates nozzles up to 7.5 metres in diameter with only a single weld on the inside of the nozzle. Consequently, these almost seamless nozzles are stronger, better quality and faster to manufacture than conventional multiple-weld nozzles.



COMPONENTS



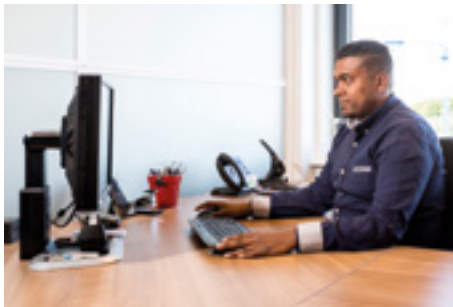
TRANSPORT & DELIVERY

Through our international support network and knowledge of transport contracts, Damen Services offers comprehensive logistics to handle own-keel, heavy-lift, towage and semi-submersible transport deliveries.



TRAINING

Damen Services' training programmes enable your employees to develop the skills, motivation and commitment necessary to reach the all-important goals of reduced operational costs and increased uptime.



WARRANTY & FLEET SUPPORT

Beginning with your warranty period, dedicated Damen Services Engineers provide the technical assistance that leads to optimal performance and reliability for your fleet.



PARTS & COMPONENTS

Damen Services can provide all the necessary parts and components for your fleet.

The philosophy of Damen Services is based on that of Damen as a family company. We're looking ahead, developing long-term relationships that cover the entire lifecycle of your vessel – from start-up, through deployment to lifetime extension.

24/7 SUPPORT

Damen understands that it is crucial your vessel is operational at all times. Therefore you can reach Damen Services for technical support 24/7 – wherever you are in the world.

SERVICE HUBS

To respond to your needs locally, Damen Services has been expanding its Service Hub network since it was established in 2014. This local presence enables our skilled engineers to reduce response time significantly.

INNOVATION

The world is developing into a network society. The challenge to stay ahead is increasingly complex. Through utilising our experiences and available data, Damen Services is able to support you in upgrading your fleet in line with the rapidly changing digitalised world.



SERVICES

TRADING

DAMEN TRADING

Damen Trading is specialised in the sale, purchase and chartering of all types of vessel. Over the years, Damen Trading has gained extensive experience in vessel brokerage and trade-in services. The result, for clients, is a comprehensive service before, during and after the acquisition of a vessel.

DAMEN MARINE SERVICES

Damen Marine Services (DMS) operates a fleet of Damen built vessels and is involved in the sale and purchase of used vessels. DMS offers its clients the experience of Damen vessels, both for established and proven designs as well as new designs with new technologies.



FINANCING

ADVANTAGES

Some of the considerable benefits of Customer Finance are:

- Saving costs due to favourable loan duration, down payment and interest rates, relative to local market conditions.
- User friendly service. Customer Finance will arrange the most suitable financial package on your behalf, including assisting with an application and documentation and conducting risk assessments.
- Our market knowledge and financing experience offer you significant confidence as well as wide access to a range of relevant financial solutions.

Subsequently, you benefit from these advantages because the financing solution will fit within your planned operations. For instance, you have the flexibility to invest in other business priorities due to a cost saving financing loan.

Or, a government entity can reach its policy objectives in public infrastructure through allocating its budget over multiple years. In addition, for a start-up company, the initial challenging investments can be realised by Damen's efforts to attract finance on your behalf.

CUSTOMER FINANCE

Damen Customer Finance offers a wide range of financing arrangements for all types of Damen vessels, equipment and products. Financing solutions are available to clients in both private and public sectors. As a major client of Dutch Export Credit Agency Atradius we are highly experienced in arranging credit loans.

SUPPORT

Customer Finance supports everything from start-up companies to large corporates as well as government bodies. For more than 40 years, Customer Finance has dedicated itself to arranging export loans and leasing facilities. During this period, long lasting relationships have been developed with national and international commercial banks, export credit insurers, investors and (multilateral) institutions.

For start-ups and special purpose companies, Customer Finance can provide support via project finance, based on projected cash flow related to contracts and anticipated contracts.

Additionally, via Damen LeaseCo, our clients in Europe and Russia are able to lease a Damen vessel.



PORTFOLIO

HARBOUR & TERMINAL Azimuth Stern Drive Tug 2009|2310|2411|2810|2810 Hybrid|2811|2813|2913|3212 Azimuth Tractor Drive Tug 2412 Reverse Stern Drive Tug 2513 Stan Tug 1004|1205|1606|1907|2309|2608|3011|4013 Advanced Rotor Tug 80-32 Pusher Tug 2611|2811 ASD|3613|4317|4619 Ice Class Vessel ASD 2609|ASD 3010|ASD 3412|STu 1606|SBu 2709|SBu 3312|SPo 6316|SPo 8916 Pushbuster 3009|3511 Stan Launch 804 Pushy Cat 1004|1305 Utility Vessel 2510 3608|3911|4312|5514|6516 Multi Purpose Vessel 5413|6014|6214|8116|8316 Multi Cat 1205|1506|1908|1908 SD|2108|2409|2510|2611|2613|2712|3013|3213 3315 DP2 Shoalbuster 1907|2208S|2308|2508 SD|2509|2609|2709|2711|3009|3209|3311|3511|3512|3612|3815 SSD Stan Tender 1504|1505|1905|2306 Stan Pilot 1505|1505 FRP|1605 FRP|2205 FRP Inspection Vessel 1204 Search and Rescue Vessel 1906 Fire Fighting Vessel 2406 Floating Dry Dock 5020|7020 Stan Pontoons|Modular Pontoons|Modular Booster Pontoons|Crane Barges|Transshipment Barges|Load Out Recovery Barges|Modular Floating Dry Docks|Modular Offshore Unit Dry Docks|Modular Multi Cats|Modular Pushers

OFFSHORE OIL & GAS Research Vessel 3609|6613 Seismic Research Support Vessel 3508|4009 Infield Cable Layer 5000 Utility Vessel 2510|3608|3911|4312|5514 6516 Anchor Handling Tug Supplier 75|120|150|180|200 Platform Supply Vessel 1600|2500|3300 CD|4000 CD|5000 CD|6000 CD Inspection, Repair & Maintenance Vessel FIRM 120|2510 Offshore Carrier 8500 Construction Support Vessel 8019 Walk-to-Work Vessel 9020 Modular Pipe Laying Vessel 7310 Jack Up Unit 5632 P|6136 P|7140 P|8742 P Multi Purpose Vessel 5413|6014|6214|8116|8316 Fast Crew Supplier 1204|1605|1605 FRP|2008|2206|2610|3307|3307 Security 4008|5009|5009 Security Security Well Stimulation Vessel 6014|8016 CD Aid Tender Vessel 4810 Buoy Laying Vessel 8317 Oil Spill Response Vessel 1050|5312|6213 Safety Standby Vessel 4711 Offshore Support Tug 4513|4914|5515 Azimuth Tractor Drive Tugs|Azimuth Stern Drive Tugs|Advanced Rotor Tugs|Stan Pontoons|Modular Pontoons|Hopper Barges|Bunker Barges|Crane Barges|Floating Cranes|Offshore Accommodation Barges

OFFSHORE WIND Walk-to-Work Vessel 9020 Utility Vessel 2510|3608|3911|4312|5514|6516 Anchor Handling Tug Supplier 75|120|150|180|200 Fast Crew Supplier 2008|2610 Research Vessel 3609|6613 Seismic Research Support Vessel 3508|4009 Jack Up Unit 5632 P|6136 P|7140 P|8742 P Infield Cable Layer 5000 Offshore Carrier 8500 Multi Cat 1205|1506|1908|1908 SD|2108|2409|2510|2611|2613|2712|3013|3213|3315 DP2 Shoalbusters|Azimuth Tractor Drive Tugs|Azimuth Stern Drive Tugs|Stan Pontoons|Modular Pontoons|Hopper Barges|Bunker Barges|Crane Barges|Offshore Accommodation

DEFENCE & SECURITY Air Defence & Command Frigate|Multi Purpose Frigate|SIGMA Multi Mission Frigate 11515|10514 SIGMA Light Frigate and Corvette 10513|9813|9113|8113 SIGMA Fast Combatant 7511|6811|6110 Crossover 139 Fast Combatant|131 Amphibious|131 Combatant|131 Logistic|123 Fast Security 115 Security Ocean Going Patrol Vessel Holland Class|4300 Offshore Patrol Vessel 2600|2400|1800|1400|1000|950|850 Stan Patrol 6011|5509|5009|4207 3007|2205 FRP|1605|1605 FRP|1204 Fast Crew Supplier 5009 Security|3307 Security Interceptor 2605|2004|1503|1102 Rigid Hull Inflatable Boat 750 IB 750 OB|850 IB|850 OB|975 IB|975 OB|1050 IB|1050 IB|1125 IB|1125 OB|1200 IB|1200 IB Cabin|1200 OB Custom Built Amphibious Ships Rotterdam|Johan de Witt|Bay Class Enforcer Landing Platform Dock 25000|23000|17000|15000|13000|11000|10000|9000|8000|7000 Landing Ship Logistic 80|70|60|55|50 40 Landing Ship Transport 120|100|80 Landing Craft Utility 3607 Landing Craft Vehicles Personnel 1604 Fast Assault Craft 1604 Custom Built Naval Auxiliaries Joint Support Ship Karel Doorman Auxiliary Oil Replenishment Amsterdam Logistic Support Vessel Replenishment 16000|Pelikaan Hydrographic Survey Vessel 6613|Snellius Multi Role Auxiliary Vessel 3600|1600|660 Multi-role Aviation Training Vessel Sycamore Sail Training Vessel 3500|3000|2630

YACHTING Amels Limited Editions 180|188|206|220|242|272 SeaXplorer 55|65|90|100 Yacht Support Vessel 4008|5009|6911|9016

DREDGING Cutter Suction Dredger 250|350|450|500|650 DOP Dredger 200|250|350 Trailing Suction Hopper Dredger 650|1000|1500|2000|2500 Marine Aggregate Dredger 4000|5600 Trailing Suction Pipe System 400|500|600|700|750|800|900 DOP Pump 150|200|250|350|350 L|450 L Booster Station 250|350 400|450|500|600|650|700|750 Water Injection Dredgers|Shoalbusters|Multi Cats|Stan Tugs|Stan Pontoons|Modular Pontoons|Stan Tenders|Pushbusters|Stan Hopper Barges|Split Hopper Barges|Dredger Crane Barges

PUBLIC TRANSPORT Ferry 1806|2206|2806 Fast Ferry 3209|3609|4010|4212 Water Bus 2007|2407|3007|3207 Water Taxi 1004|1204|1606 Fast Ropax 4512 5114|5510|6218 Ropax Ferry 6616 E3|8017 Modular Ferry 2010|2412|3012|3610|3612|3710 Road Ferry 5212|7014|8117|8521|13023 Modular Jetties|Landing Platforms|Floating Dry Docks|Modular Floating Dry Docks|Mooring Pontoons

FISHING Beam Trawler 3608 King Crab Fisher 1600 Sea Fisher 2007 Stern Trawler|2408 Long Liner|2408 Stern Trawler|2608 Scampi Vessel|3208 Purse Seiner Longliner 5913 Factory Trawler 5012 Fish Collecting Vessel 2308 Mussel Dredger 2610|4310 Oyster Dredger 2908 Razor Shell Dredger 4309 Fishery Research Vessel 3609|6613

AQUACULTURE Utility Vessel 2510|3608|3911|4312|5514|6516 Live Fish Carrier 4000 Multi Cat 1205|1506|1908|1908 SD|2108|2409 Stan Pontoon 3011|4111 4113|4116 Stan Tug 1004|1205|1606|1606 Ice|1907|1907 Ice|2208|2309|2608|3011|4013 Pushy Cat 1004|1305 DOP Pump 150|200|250|350|350 L|450 L Fast Crew Suppliers|Stan Tenders|Combi Freighters|Stan Pontoons

SEA & RIVER CRUISING Expedition Cruise Ship|Day Cruise|River Cruise

SEAGOING TRANSPORT Container Feeder 800|900|1100 Open Top|1700|2500 Combi Coaster 2750 Combi Freighter 3850|5000|8200|9200|11000|14000 19000 Stan Lander 4510|5612 Roll-on Roll-off 1800|2300 Tanker 800|2500|4150|5700|8000|23000 Liquefied Gas Carrier 1500 LNG|3000 LNG|6500 LNG|7500 LNG Stan Tanker 5412 Offshore Carrier 8500 Offshore Freighter 4500|6000|9000 Heavy Lift Vessel 1600|1800 Stan Tugs|Shoalbusters|Pontoons|Barges

INLAND SHIPPING Ecoliner 1145 Tanker 800|2500|4150|5700|8000|23000 Pusher Tug 2611|2811 ASD|3613|4317|4619 Pushbuster 3009 Modular Pusher 1807 Stan Tugs 1004|1205|1606|1606 Ice|1907|1907 Ice|2208|2309|2608|3011|4013 Shoalbuster 1907|2208S|2308|2508 SD|2509|2609|2709 Ice|2709|2711|3009 3209|3311|3312 Ice|3511|3512|3612|3815 SSD Stan Pontoons|Modular Pontoons|Modular Jetties|Hopper Barges|Bunker Barges|Crane Barges|Floating Dry Docks|Modular Floating Dry Docks|Modular Offshore Unit Dry Docks

PONTOONS & BARGES Stan Pontoon 3011|4111|5211|4512|4113|4113 HD|5213|6313|4116|5216|6316|6316 ICE|8916 ICE|8916 SD|5020|6120|7120|5224 6324|7524|8624|9127|9832|10932|12032|12136|13336|14536 Shallow Draught Side Floater 8605 Bunker Barge Inland 3109|4109|5109|4211|5211|6211|5113|6113|7113|8113|7216 Bunker Barge Coastal & Ocean Going 7216|8116|8916|8320|9320|10320 Hopper Barge Inland 2908|4108|3611|4811|6011|4813|6013|7113 Hopper Barge Coastal & Ocean Going 4813|6013|7113|6016|7116|8316|6020|7120|8320 Transshipment Crane Barge 5224|6324|7524|8624 Crane Barge 3216|4015|4518|4020|4920|5224|6324|8025 Offshore Accommodation Barge 7120 Mooring Pontoon 2404 Spill Pontoon 2405|2113|2413|2116

ENVIRONMENTAL SAFETY & CONTROL Ballast Water Treatment Port Solutions InvaSave 300 Retrofit Solutions LOFLO 30|60|90 Balcon 750 SOx Scrubber N|R Modular Tidal Turbine 2402 Buoy Laying Vessel 8317 Search and Rescue Vessel 1906 Fire Fighting Vessel 2406 Oil Spill Response Vessel 1050|5312|6213 Safety Standby Vessel 4711 Water Making Barges|Multi Purpose Vessels|Seismic Research Support Vessels

CIVIL Environmental Planning|Floating Dry Docks|Graving Docks|Travellifts|Slipways|Shiplifts|Transfer Areas|Jetties|Linkspans|Catwalks|Production Sheds Repair Facilities|Quay walls|Breakwaters|Fenders|Bollards|Training Centres|Modular Container Units|Mobile Workshop 2088|2089|4088|4089 Mobile Power Supply 2088 Mobile Storage 2088|4088 Mobile Accommodation 2088|4088 Mobile Office 2088|4088

MODULAR CONSTRUCTIONS Modular Ferry 2010|2412|3012|3610|3710|3612 Modular Multi Cat 1205|1805|1807|2210 Modular Pontoon 1212|2212|2415|3015 3617 Modular Booster Pontoon 1810 Modular Jetty 2005|4802|6005|7505 Modular Link Span 45 Modular Pusher 1807 Modular Pipe Laying Vessel 7310 Modular Drilling Barge 2407 Modular Tidal Turbine 2402 Modular Floating Dry Dock 5020|6020|7020|7026|8020|8026|10020|11026|11520|12526|12536|15026|15036 17526|18036|22026|21036|24526|24536|27536|31036

SPECIALS Sail Training Vessel 2630|3000|3500 Multi Purpose Pontoon 8017 Fishery Inspection and Surveillance Vessel 900 Multi-role Aviation Training Vessel 2300 Multi Buster 7020 Fire Fighting Vessel 1804 Antarctic Supply Research Vessel|Nuclear Cargo Vessel

DAMEN

HEAD OFFICE

Gorinchem, the Netherlands

NEWBUILD YARDS

Albwardy Damen, United Arab Emirates **
Amels *
Concordia Damen Shipbuilding *
Damen Dredging Equipment *
Damen Maaskant Shipyards Stellendam * **
Damen Schelde Naval Shipbuilding *
Damex Shipbuilding & Engineering, Cuba **
Damen Shipyards Antalya, Turkey
Damen Shipyards Bergum *
Damen Shipyards Cape Town, South Africa
Damen Shipyards Changde, China
Damen Shipyards Den Helder * **
Damen Shipyards Galati, Romania
Damen Shipyards Gdynia, Poland
Damen Shipyards Gorinchem *
Damen Shipyards Hardinxveld *
Damen Shipyards Kozle, Poland
Damen Shipyards Singapore, Singapore **
Damen Song Cam Shipyard, Vietnam
Damen Yichang Shipyard, China
Nakilat Damen Shipyards Qatar, Qatar

SHIPREPAIR & CONVERSION YARDS

Albwardy Damen, United Arab Emirates **
Damen Maaskant Shipyards Stellendam * **
Damen Oskarshamnsväret, Sweden
Damen Shiprepair Amsterdam *
Damen Shiprepair Brest, France
Damen Shiprepair Curaçao, Curaçao
Damen Shiprepair Dunkerque, France
Damen Shiprepair Harbour & Voyage *
Damen Shiprepair Harlingen *
Damen Shiprepair Oranjerwerf *
Damen Shiprepair Rotterdam *
Damen Shiprepair Van Brink Rotterdam *
Damen Shiprepair Vlissingen *
Damen Shipyards Den Helder * **
Damen Shipyards Singapore, Singapore **
Damen Verolme Rotterdam *
Damex Shipbuilding & Engineering, Cuba **

SERVICE HUBS

Damen Services Brisbane, Australia
 Damen Services Dubai, United Arab Emirates
 Damen Services Gorinchem *
 Damen Services Novorossiysk, Russia
 Damen Services Port Harcourt, Nigeria
 Damen Services Rio de Janeiro, Brazil
 Damen Services St. Johns, Canada

SUPPORTING COMPANIES

Brixham Marine Services, United Kingdom
 Damen Anchor & Chain Factory (AKF) *
 Damen Engineering Gdansk, Poland
 Damen Green Solutions *
 Damen Marine Components *
 Damen Marine Components Gdansk, Poland
 Damen Marine Components Jiangyin, China
 Damen Marine Services *
 Damen Schelde Marine Services Singapore
 Damen Schelde Marine Services Vlissingen *
 Damen Trading & Chartering *
 Damen Trading Suzhou, China
 Damen Winch Technology *
 Delta Marine Engineering *
 Marine Design Engineering Mykolayiv, Ukraine
 Marine Engineering Galati, Romania
 Knud E. Hansen, Denmark
 Niron Staal *
 Offshore Ship Designers *

BUSINESS COOPERATIONS

AMERICAS

Armada de Colombia, Colombia
 Astilleros Navales Ecuatorianos (Astinave), Ecuador
 ASTIMAR 1, Mexico
 Blount Boats, United States of America
 Bollinger Shipyards, United States of America
 Caribbean Drydock Company, Cuba
 Conrad Industries, United States of America
 Great Lakes Shipyards, United States of America
 GulfShip, United States of America
 Horizon Boatbuilders, United States of America
 Irving Shipbuilding, Canada
 Irving Shipyards Inc., United States of America
 LaShip, United States of America
 Metal Shark Boatbuilders, United States of America
 North American Shipbuilding, United States of America
 Servicios Portuarios Integrados, Argentina
 SDSM, Suriname
 Tampa Ship, United States of America
 Wilson Sons, Brazil

AFRICA

Canal Naval Constructions, Egypt
 Dar Assina'a Wa Assiana Albahria, Libya
 Monkey Bay Shipyard, Malawi
 West Atlantic Shipyard, Nigeria

ASIA PACIFIC

189 Shipbuilding Company, Vietnam
 Afai Southern Shipyard, China
 Dumas Tanjung Perak Shipyard, Indonesia
 Far Eastern Shipbuilding and Repair Center, Russia
 Ha Long Shipyard, Vietnam
 Pha Rung Shipyard, Vietnam
 Song Cam Shipbuilding, Vietnam
 Song Thu Corporation, Vietnam
 Steadfast Marine, Indonesia

EUROPE

Pashaliman, Albania

33

YARDS WORLDWIDE

200 VESSELS
IN STOCK

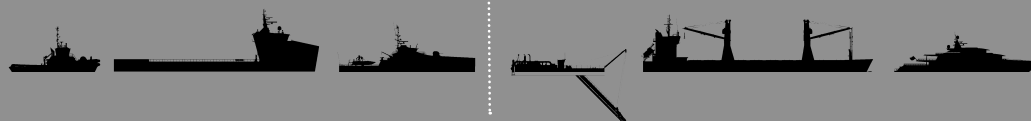
1500 SHIPREPAIR &
CONVERSION JOBS
PER YEAR

180 DELIVERIES
PER YEAR

6000

VESSELS DELIVERED

1000 VESSELS
BUILT ON SITE

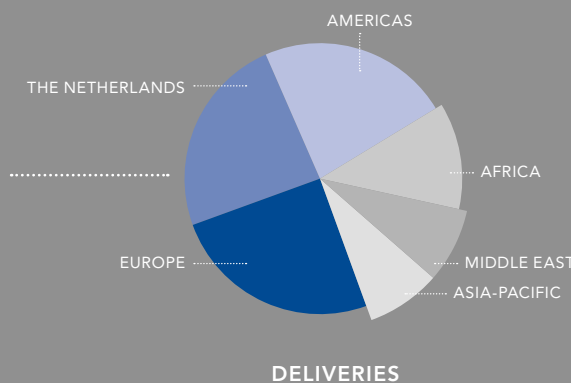
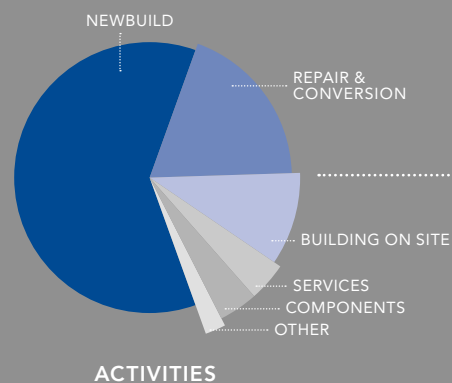


7 SERVICE HUBS
WORLDWIDE

9000

DAMEN EMPLOYEES

100+ ACTIVE IN
COUNTRIES



FOUNDED IN 1927

DAMEN

ANNUAL TURNOVER 2.1 BILLION EURO

* company based in the Netherlands
 ** both newbuild and repair activities

GLOBAL SUPPORT

We aim to make things as convenient as possible. This means doing what you need us to do, wherever you need us to do it.

In order to make that a reality, our services cover the entire lifecycle of a vessel, across the entire spectrum of maritime industries.

Our sales force, like our newbuild and repair yards and strategically located Service Hubs, is also globally active, with regional offices strategically located to make sure you can reach us quickly and easily.

To find out more about Damen, visit the website or contact us today:

phone +31 183 63 99 22
fax +31 183 63 21 89
sales@damen.com
www.damen.com



MARKETS

- HARBOUR & TERMINAL
- OFFSHORE OIL & GAS
- OFFSHORE WIND
- DEFENCE & SECURITY
- YACHTING
- DREDGING
- PUBLIC TRANSPORT
- SEA AND RIVER CRUISING
- SEAGOING TRANSPORT
- INLAND SHIPPING
- PONTOONS & BARGES
- FISHING
- AQUACULTURE
- ENVIRONMENTAL SAFETY & CONTROL
- CIVIL
- SPECIALS

KEEPING YOU ON TOP OF YOUR GAME

Damen Shipyards Group is the copyright owner of this brochure - © Damen Shipyards Group 2017. All rights reserved. Except with the prior express written permission of Damen Shipyards Group, this brochure and its content may not be distributed and/or commercially exploited.

DESIGN NEWBUILD REPAIR & CONVERSION COMPONENTS SERVICES







DAMEN

DAMEN.COM