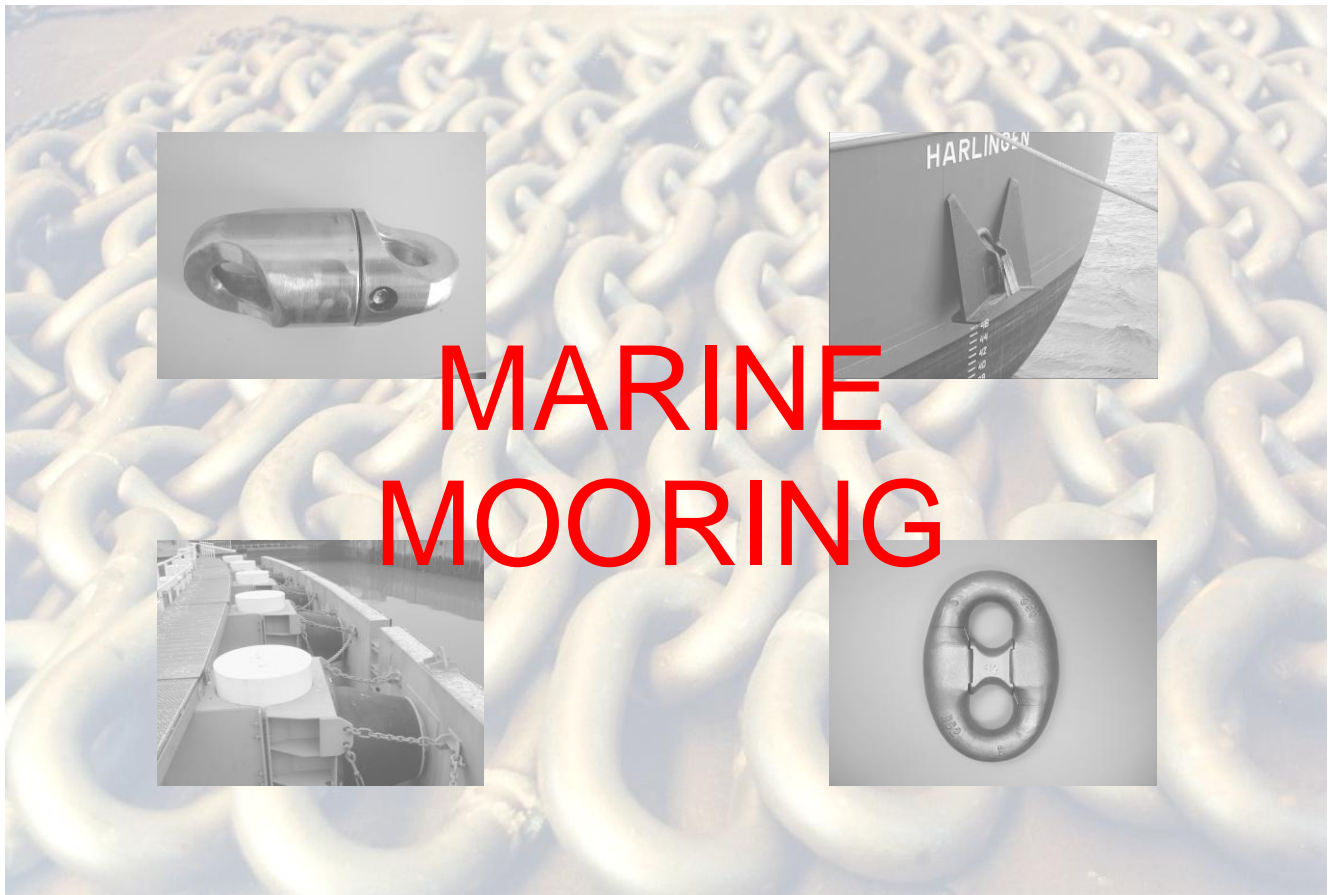
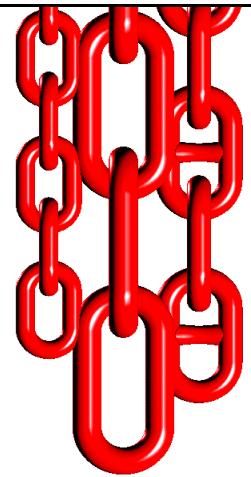


CARLIER CHAINES SAS

LEVAGE
MARINE
OFFSHORE
INDUSTRY



MARINE MOORING

Version: 01/2011



Edition: n° 09

Tel: 00 33 (0)3 27 48 12 00

Fax: 00 33 (0)3 27 48 95 27

37 rue Roger SALENGRO - BP10145 - 59733 - St AMAND LES EAUX - FRANCE

email : info@carlier-chain.com

CARLIER CHAINES



37 rue Roger SALENGRO - BP10145 - 59733 - St AMAND LES EAUX - FRANCE
DA79.01 ind 02

Tel: 00 33 (0)3 27 48 12 00

Fax: 00 33 (0)3 27 48 95 27

mail : info@carlier-chain.com





SUMMARY

• I / Chains

- description :

- 1 Chains terminology p 3
- 2 Stud link chain p 4
- 3 Some types of chain arrangements. p 5

- chains:

- 4 Stud link chain fittings p 6
- 5 Stud link chain fittings tables p 8
- 6/7 Description of different shackle and swivel . . . p 9
- 8 studless chain and swivel din 5683. p 32
- 9 Studless chains p 33

• II / Properties

- 1 Eye bolt p 38
- 2 Omega bar for concrete sinker p 39
- 3 Hook p 40
- 4 Chain ajuster p 41
- 5 Type attachment and connection p 43
- 6 Turnbuckles p 45
- 7 Triangular plate p 46

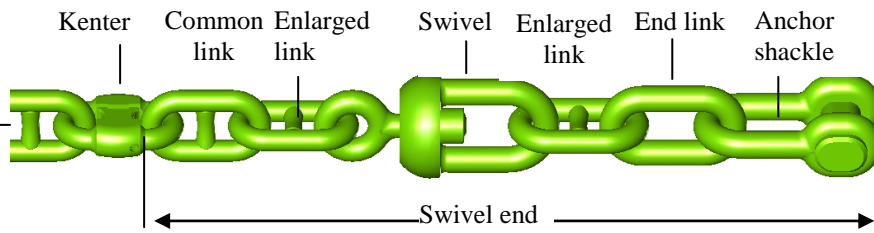
• III / the anchor hook

- 1 Anchor type p 47
- 2 Anchor class p 48
- 3 AC14 HHP anchor p 49
- 4 DANFORTH HHP anchor p 50
- 5 HALL anchor p 51
- 6 POOL HHP anchor p 52



• I/ Chains:

-I/ CHAINS TERMINOLOGY



DN : Nominal diameter of the round forming the common link.

- ❖ **SHOT or SET** : A standard length (27.5 m) of chain of a given size.
Ex : A 27.5 m length of DN 50 chain cable.

Link : A single element of a chain cable.

There are 3 kinds of link:

- The common link witch determines the chain cable size.
- The enlarged link used to join common links to end links.
- The end link, without stud, allows a shackle to be inserted.

STUD : Central reinforcement of each link be jointed together.

“KENTER” CONNECTING LINK: Forged and machined, it permits to join two lengths of chain cable without end links.

SWIVEL END: A pivoting element located before the anchor to prevent the chain cable from twisting and kinking at its mooring.

It contains:

- an enlarged link at each end if the chain cable is jointed by a joining shackle.
- an enlarged link at one end and a common link at the other end

When the connection is made by a “kenter” connecting link.

ANCHOR SHACKLE : Enables a chain cable with a swivel to be connected to an anchor .

CLINCH SHACKLE: Enables the chain cable to be attached in the loker room of the ship

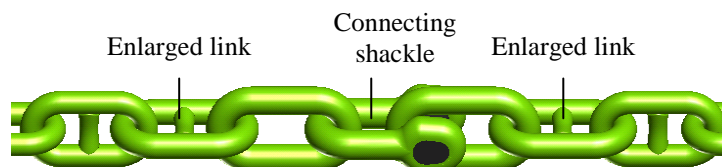
CALIBRATION OF CHAIN CABLE: It is the measured length of 5 consecutive common links including end pieces:

$$22 \times \text{DN} < \text{Calibration} < 22,55 \times \text{DN}$$

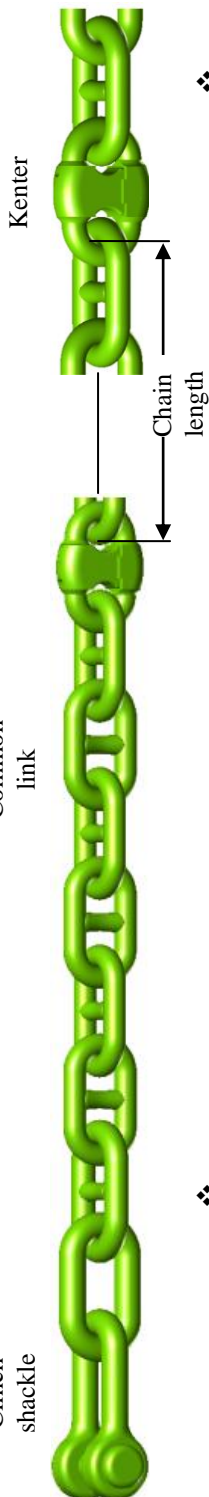
TOLERANCE WEAR OF THE CHAIN CABLE: Maximum 10 % below the DN

- ❖ **GRADE FOR CHAIN** : Categories of chain cables.

- Veritas: Q1,Q2,Q3.
- Lloyd’s Register : U1,U2,U3



2 Lengths of chain joined by a connecting shackle



CARLIER CHAINES



37 rue Roger SALENGRO - BP10145 - 59733 - St AMAND LES EAUX - FRANCE
DA79.01 ind 02

Tel: 00 33 (0)3 27 48 12 00

Fax: 00 33 (0)3 27 48 95 27

mail : info@carlier-chain.com



-2/ STUD LINK CHAIN



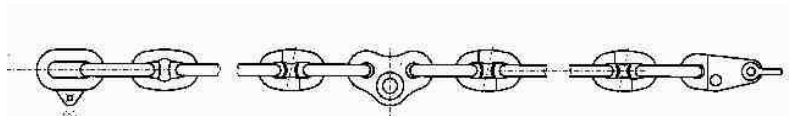
CODE ARTICLE	Nominal Diameter		Pitch (mm)	Width (mm)	Quality Q1		Quality Q2		Quality Q3		Weight per metre (Kg)
	(mm)	(Inches)			PL (kN)	BL (kN)	PL (kN)	BL (kN)	PL (kN)	BL (kN)	
CEQ_D14	14	9/16	56	22,4	58	82	82	115	115	165	4.44
CEQ_D16	16	5/8	64	25,6	75	106	106	150	150	215	5.71
CEQ_D18	17,5	11/16	70	28	89	127	127	180	180	255	6.76
CEQ_D19	19	3/4	76	30,4	105	150	150	210	210	300	7.93
CEQ_D20	20,5	13/16	82	32,8	123	175	175	244	244	349	9.20
CEQ_D22	22	7/8	88	35,2	140	200	200	280	280	401	10.55
CEQ_D24	24	15/16	96	38,4	167	237	237	332	332	476	12.47
CEQ_D26	26	1"	104	41,6	194	278	278	389	389	556	14.55
CEQ_D28	28	1" 1/8	112	44,8	225	321	321	449	449	642	16.80
CEQ_D30	30	1" 1/5	120	48	257	368	368	514	514	736	19.27
CEQ_D32	32	1" 1/4	128	51,2	291	417	417	583	583	833	21.93
CEQ_D34	34	1" 3/8	136	54,4	328	468	468	655	655	937	24.73
CEQ_D36	36	1" 4/9	144	57,6	366	523	523	732	732	1050	27.64
CEQ_D38	38	1" 1/2	152	60,8	406	581	581	812	812	1160	30.90
CEQ_D40	40	1" 4/7	160	64	448	640	640	896	896	1280	33.82
CEQ_D42	42	1" 5/8	168	67,2	492	703	703	981	981	1400	37.45
CEQ_D44	44	1" 3/4	176	70,4	538	769	769	1080	1080	1540	41.45
CEQ_D46	46	1" 13/16	184	73,6	585	837	837	1170	1170	1680	44.90
CEQ_D48	48	1" 7/8	192	76,8	635	908	908	1270	1270	1810	48.90
CEQ_D50	50	1" 15/16	200	80	686	981	981	1370	1370	1960	53.09
CEQ_D52	52	2" 1/16	208	83,2	739	1060	1060	1480	1480	2110	57.64
CEQ_D54	54	2" 1/8	216	86,4	794	1140	1140	1590	1590	2270	61.82
CEQ_D56	56	2" 1/5	224	89,6	851	1220	1220	1710	1710	2430	66.91
CEQ_D58	58	2" 1/4	232	92,8	909	1290	1290	1810	1810	2600	72.00
CEQ_D60	60	2" 3/8	240	96	969	1380	1380	1940	1940	2770	77.09
CEQ_D62	62	2" 4/9	248	99,2	1030	1470	1470	2060	2060	2940	82.00
CEQ_D64	64	2" 1/2	256	102,4	1100	1560	1560	2190	2190	3130	87.09
CEQ_D66	66	2" 4/7	264	105,6	1160	1660	1660	2310	2310	3300	93.45
CEQ_D68	68	2" 2/3	272	108,8	1230	1750	1750	2450	2450	3500	98.73
CEQ_D70	70	2" 3/4	280	112	1290	1840	1840	2580	2580	3690	105.45
CEQ_D73	73	2" 7/8	292	116,8	1390	1990	1990	2790	2790	3990	114.54
CEQ_D76	76	3"	304	121,6	1500	2150	2150	3010	3010	4300	124.54
CEQ_D78	78	3" 1/16	312	124,8	1580	2260	2260	3160	3160	4500	131.64
CEQ_D81	81	3" 1/5	324	129,6	1690	2410	2410	3380	3380	4820	141.09
CEQ_D84	84	3" 1/3	336	134,4	1800	2580	2580	3610	3610	5160	150.36
CEQ_D87	87	3" 4/9	348	139,2	1920	2750	2750	3850	3850	5500	163.09
CEQ_D90	90	3" 1/2	360	144	2050	2920	2920	4090	4090	5840	176.00
CEQ_D92	92	3" 5/8	368	147,2	2130	3040	3040	4260	4260	6080	183.27
CEQ_D95	95	3" 3/4	380	152	2260	3230	3230	4510	4510	6440	196.73
CEQ_D97	97	3" 4/5	388	155,2	2340	3340	3340	4680	4680	6690	204.00
CEQ_DA0	100	3" 15/16	400	160	2470	3530	3530	4940	4940	7060	217.45
CEQ_DA2	102	4"	408	163,2	2560	3660	3660	5120	5120	7320	228



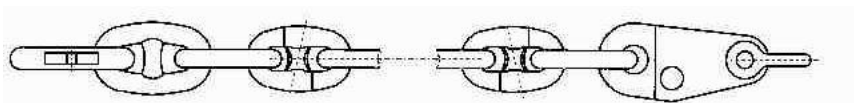
-3/ SOME TYPES OF CHAIN ARRANGEMENTS



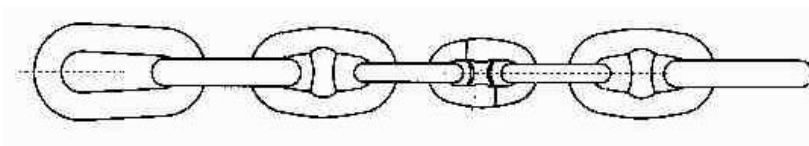
Chafing chains following OCIMF standards
Special connections,...



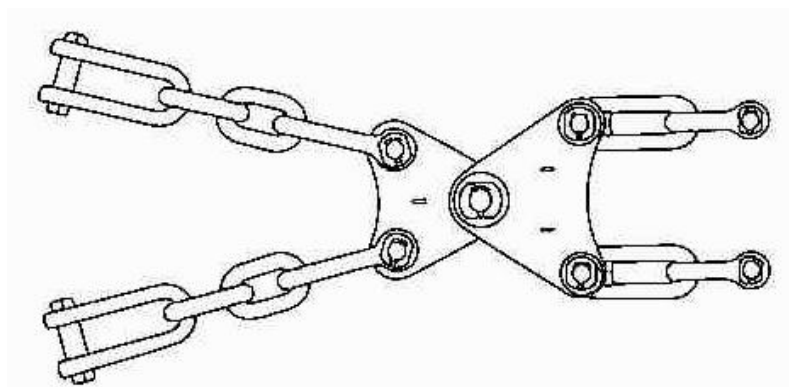
Chafe chain type A et B



Chafe chain type C



Mooring chain type D, E et F



Special chain assemblies

CARLIER CHAINES



37 rue Roger SALENGRO - BP10145 - 59733 - St AMAND LES EAUX - FRANCE
DA79.01 ind 02

Tel: 00 33 (0)3 27 48 12 00

Fax: 00 33 (0)3 27 48 95 27

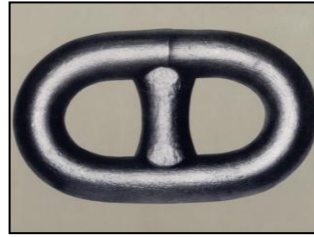
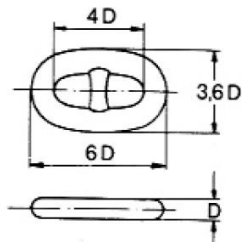
mail : info@carlier-chain.com



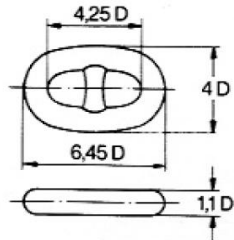
-4/ STUD LINK CHAIN FITTINGS



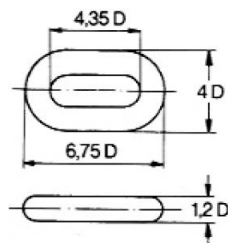
a: Common link



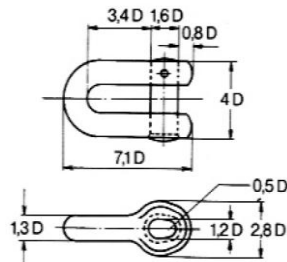
b: Enlarged link



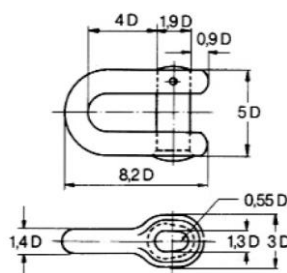
c: End link



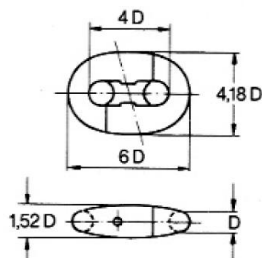
d: Joining shackle



e: Anchor shackle



f: Kenter link



CARLIER CHAINES



37 rue Roger SALENGRO - BP10145 - 59733 - St AMAND LES EAUX - FRANCE
DA79.01 ind 02

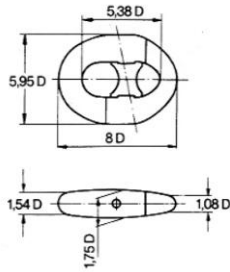
Tel: 00 33 (0)3 27 48 12 00

Fax: 00 33 (0)3 27 48 95 27

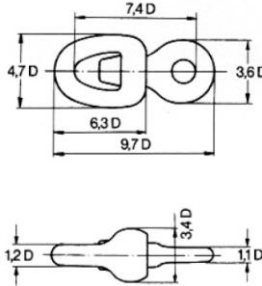
mail : info@carlier-chain.com



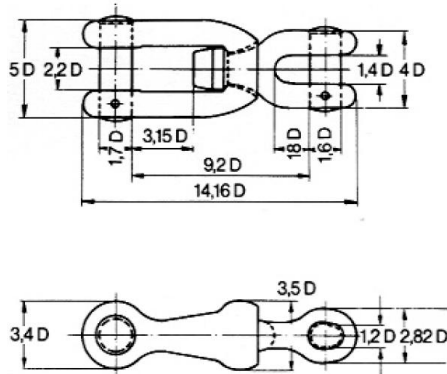
g: Anchor kenter shackle



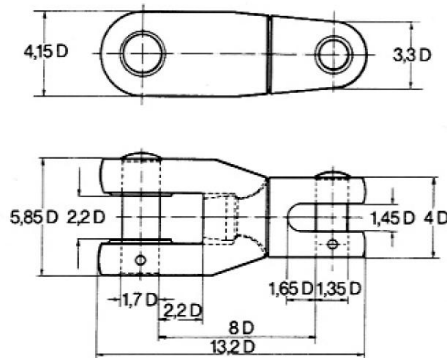
h: Swivel



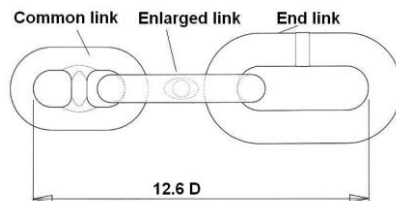
i: Jaw and jaw swivel



j: Jaw and jaw swivel ASW



k. Three links adaptor



D=Nominal diameter of chain

CARLIER CHAINES



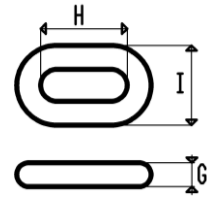
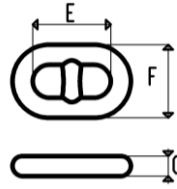
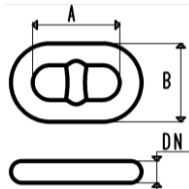
37 rue Roger SALENGRO - BP10145 - 59733 - St AMAND LES EAUX - FRANCE
 mail : info@carlier-chain.com

Tel: 00 33 (0)3 27 48 12 00

Fax: 00 33 (0)3 27 48 95 27



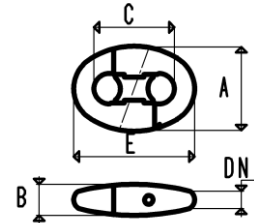
-5/ STUD LINK CHAIN FITTINGS TABLES



DN		CODE ARTICLE	Common link		Enlarged link			CODE ARTICLE	End link		
Nominal Size	mm		A	B	C	E	F		G	H	I
	Inches		mm	mm	mm	mm	mm	mm	mm	mm	
14	9/16	CEQ_D14	56	50	15	60	56	ME18061X020	18	61	56
16	5/8	CEQ_D16	64	58	18	68	64	ME20075X032	20	75	72
17,5	11/16	CEQ_D18	70	63	19	74	70	ME20075X032	20	75	72
19	3/4	CEQ_D19	76	68	21	81	76	ME22083X032	22	83	76
20,5	13/16	CEQ_D20	82	74	23	87	82	ME25089X032	25	89	82
22	7/8	CEQ_D22	88	79	24	94	88	ME26096X036	26	96	88
24	15/16	CEQ_D24	96	86	26	102	96	ME30104X036	30	104	96
26	1"	CEQ_D26	104	94	29	111	104	ME32113X040	32	113	104
28	1" 1/8	CEQ_D28	112	101	31	119	112	ME35122X042	35	122	112
30	1" 3/16	CEQ_D30	120	108	33	128	120	ME35131X050	35	131	120
32	1" 1/4	CEQ_D32	128	115	35	136	128	ME38139X052	38	139	128
34	1" 3/8	CEQ_D34	136	122	37	145	136	ME42148X052	42	148	136
36	1" 7/16	CEQ_D36	144	130	40	153	144	ME44157X056	44	157	144
38	1" 1/2	CEQ_D38	152	137	42	162	152	ME46165X060	46	165	152
40	1" 9/16	CEQ_D40	160	144	44	170	160	ME48174X064	48	174	160
42	1" 5/8	CEQ_D42	168	151	46	179	168	ME50183X068	50	183	168
44	1" 3/4	CEQ_D44	176	158	48	187	176	ME52191X072	52	191	176
46	1" 13/16	CEQ_D46	184	166	51	196	184	ME55200X074	55	200	184
48	1" 7/8	CEQ_D48	192	173	53	204	192	ME58209X076	58	209	192
50	1" 15/16	CEQ_D50	200	180	55	213	200	ME60218X080	60	218	200
52	2" 1/16	CEQ_D52	208	187	57	221	208	ME62226X084	62	226	208
54	2" 1/8	CEQ_D54	216	194	59	230	216	ME65235X086	65	235	216
56	2" 3/16	CEQ_D56	224	202	62	238	224	ME68244X088	68	244	224
58	2" 1/4	CEQ_D58	232	209	64	247	232	ME70252X092	70	252	232
60	2" 3/8	CEQ_D60	240	216	66	255	240	ME72261X096	72	261	240
62	2" 7/16	CEQ_D62	248	223	68	264	248	ME75270X098	75	270	248
64	2" 1/2	CEQ_D64	256	230	70	272	256	ME76278X104	76	278	256
66	2" 9/16	CEQ_D66	264	238	73	281	264	ME80287X104	80	287	264
68	2" 11/16	CEQ_D68	272	245	75	289	272	ME82296X108	82	296	272
70	2" 3/4	CEQ_D70	280	252	77	298	280	ME85305X110	85	305	280
73	2" 7/8	CEQ_D73	292	263	80	310	292	ME88318X116	88	318	292
76	3"	CEQ_D76	304	274	84	323	304	ME90331X124	90	331	304
78	3" 1/16	CEQ_D78	312	281	86	332	312	ME94339X124	94	339	312
81	3" 3/16	CEQ_D81	324	292	89	344	324	ME97352X130	97	352	324
84	3" 5/16	CEQ_D84	336	302	92	357	336	MEA1365X134	101	365	336
87	3" 7/16	CEQ_D87	348	313	96	370	348	MEA4378X140	104	378	348
90	3" 1/2	CEQ_D90	360	324	99	383	360	MEA8392X144	108	392	360
92	3" 5/8	CEQ_D92	368	331	101	391	368	MEB0400X148	110	400	368
95	3" 3/4	CEQ_D95	380	342	105	404	380	MEB4413X152	114	413	380
97	3" 13/16	CEQ_D97	388	349	107	412	388	MEB6422X156	116	422	388
100	3" 15/16	CEQ_DA0	400	360	110	425	400	MEB0435X160	120	435	400



-6/ KENTER SHACKLE



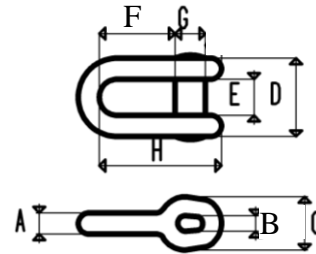
The kenter joining shackle is used to join,
For example, two stud link chain elements
ending in common link or enlarged link

DN		CODE ARTICLE	KENTER SHACKLE				Weight kg
Nominal Size			A	B	C	E	
mm	Inches		mm	mm	mm	mm	
14	9/16	HK3D14	59	21	56	84	0,52
16	5/8	HK3D16	67	24	64	96	0,62
17,5	11/16	HK3D17	73	27	70	105	0,85
19	3/4	HK3D19	79	29	76	114	1,00
20,5	13/16	HK3D20	86	31	82	123	1,55
22	7/8	HK3D22	92	33	88	132	1,62
24	15/16	HK3D24	100	36	96	144	2,00
26	1"	HK3D26	109	40	104	156	2,70
28	1" 1/8	HK3D28	117	43	112	168	3,30
30	1" 3/16	HK3D30	125	46	120	180	3,90
32	1" 1/4	HK3D32	134	49	128	192	4,55
34	1" 3/8	HK3D34	142	52	136	204	5,82
36	1" 7/16	HK3D36	150	55	144	216	6,62
38	1" 1/2	HK3D38	159	58	152	228	7,75
40	1" 9/16	HK3D40	167	61	160	240	9,72
42	1" 5/8	HK3D42	176	64	168	252	10,55
44	1" 3/4	HK3D44	184	67	176	264	12,00
46	1" 13/16	HK3D46	192	70	184	276	14,00
48	1" 7/8	HK3D48	201	73	192	288	15,50
50	1" 15/16	HK3D50	209	76	200	300	17,50
52	2" 1/16	HK3D52	217	79	208	312	20,00
54	2" 1/8	HK3D54	226	82	216	324	22,00
56	2" 3/16	HK3D56	234	85	224	336	26,00
58	2" 1/4	HK3D58	242	88	232	348	30,00
60	2" 3/8	HK3D60	251	91	240	360	31,50
62	2" 7/16	HK3D62	259	94	248	372	34,00
64	2" 1/2	HK3D64	268	97	256	384	38,00
66	2" 9/16	HK3D66	276	100	264	396	44,00
68	2" 11/16	HK3D68	284	103	272	408	47,00
70	2" 3/4	HK3D70	293	106	280	420	52,00
73	2" 7/8	HK3D73	305	111	292	438	57,50
76	3"	HK3D76	318	116	304	456	65,00
78	3" 1/16	HK3D78	326	119	312	468	70,00
81	3" 3/16	HK3D81	339	123	324	486	79,00
84	3" 5/16	HK3D84	351	128	336	504	88,00
87	3" 7/16	HK3D87	364	132	348	522	95,00
90	3" 1/2	HK3D90	376	137	360	540	104,00
92	3" 5/8	HK3D92	385	140	368	552	112,00
95	3" 3/4	HK3D95	397	144	380	570	123,00
97	3" 13/16	HK3D97	405	147	388	582	131,00
100	3" 15/16	HK3DA0	418	152	400	600	144,00



-6/ JOINING SHACKLE

The joining shackle is used to join two lengths of chain fitted with an end link

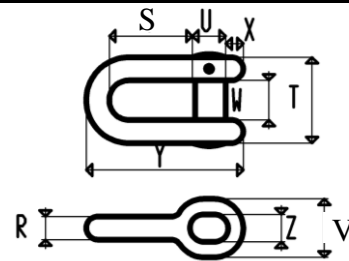


CODE ARTICLE	DN Nominal Size		Joining shackle								Weight
	mm	Inches	A mm	F mm	C mm	D mm	E mm	B mm	G mm	H mm	kg
FJ14Q3	14	9/16	18	48	39	56	20	17	22	99	1.1
FJ16Q3	16	5/8	21	54	45	64	22	19	26	114	1.3
FJ17Q3	17,5	11/16	23	60	49	70	25	21	28	124	1.4
FJ19Q3	19	3/4	25	65	53	76	27	23	30	135	1.7
FJ20Q3	20,5	13/16	27	70	57	82	29	25	33	146	2.2
FJ22Q3	22	7/8	29	75	62	88	31	26	35	156	2.5
FJ24Q3	24	15/16	31	82	67	96	34	29	38	170	3.5
FJ26Q3	26	1"	34	88	73	104	36	31	42	185	4.3
FJ28Q3	28	1" 1/8	36	95	78	112	39	34	45	199	5,0
FJ30Q3	30	1" 3/16	39	102	84	120	42	36	48	213	7,0
FJ32Q3	32	1" 1/4	42	109	90	128	45	38	51	227	7.5
FJ34Q3	34	1" 3/8	44	116	95	136	48	41	54	241	8.5
FJ36Q3	36	1" 7/16	47	122	101	144	50	43	58	256	11,0
FJ38Q3	38	1" 1/2	49	129	106	152	53	46	61	270	13,0
FJ40Q3	40	1" 9/16	52	136	112	160	56	48	64	284	15,0
FJ42Q3	42	1" 5/8	55	143	118	168	59	50	67	298	18,0
FJ44Q3	44	1" 3/4	57	150	123	176	62	53	70	312	20.5
FJ46Q3	46	1" 13/16	60	156	129	184	64	55	74	327	23,0
FJ48Q3	48	1" 7/8	62	163	134	192	67	58	77	341	26.5
FJ50Q3	50	1" 15/16	65	170	140	200	70	60	80	355	29,0
FJ52Q3	52	2" 1/16	68	177	146	208	73	62	83	369	34.5
FJ54Q3	54	2" 1/8	70	184	151	216	76	65	86	383	38,0
FJ56Q3	56	2" 3/16	73	190	157	224	78	67	90	398	42,0
FJ58Q3	58	2" 1/4	75	197	162	232	81	70	93	412	47,0
FJ60Q3	60	2" 3/8	78	204	168	240	84	72	96	426	52,0
FJ62Q3	62	2" 7/16	81	211	174	248	87	74	99	440	57,0
FJ64Q3	64	2" 1/2	83	218	179	256	90	77	102	454	63,0
FJ66Q3	66	2" 9/16	86	224	185	264	92	79	106	469	69,0
FJ68Q3	68	2" 11/16	88	231	190	272	95	82	109	483	76,0
FJ70Q3	70	2" 3/4	91	238	196	280	98	84	112	497	82,0
FJ73Q3	73	2" 7/8	95	248	204	292	102	88	117	518	93,0
FJ76Q3	76	3"	99	258	213	304	106	91	122	540	110,0
FJ78Q3	78	3" 1/16	101	265	218	312	109	94	125	554	119,0
FJ81Q3	81	3" 3/16	105	275	227	324	113	97	130	575	128,0
FJ84Q3	84	3" 5/16	109	286	235	336	118	101	134	596	137,0
FJ87Q3	87	3" 7/16	113	296	244	348	122	104	139	618	148,0
FJ90Q3	90	3" 1/2	117	306	252	360	126	108	144	639	160,0
FJ92Q3	92	3" 5/8	120	313	258	368	129	110	147	653	168,0
FJ95Q3	95	3" 3/4	124	323	266	380	133	114	152	675	184,0
FJ97Q3	97	3" 13/16	126	330	272	388	136	116	155	689	195,0
FJA0Q3	100	3" 15/16	130	340	280	400	140	120	160	710	210,0



-6/ ANCHOR SHACKLE

The anchor shackle is used
To join the swivel end of the
Chain cable to the main
Anchor shackle .



CODE ARTICLE	DN Nominal Size		Anchor shackle									Weight
	mm	Inches	R mm	S mm	T mm	U mm	V mm	W mm	X mm	Y mm	kg	
FAN14Q3	14	9/16	20	56	70	27	42	31	13	115	1.7	
FAN16Q3	16	5/8	22	64	80	30	48	35	14	131	1.9	
FAN17Q3	17,5	11/16	25	70	88	33	53	39	16	144	2.1	
FAN19Q3	19	3/4	27	76	95	36	57	42	17	156	2.5	
FAN20Q3	20,5	13/16	29	82	103	39	62	45	18	168	3.5	
FAN22Q3	22	7/8	31	88	110	42	66	48	20	180	4,0	
FAN24Q3	24	15/16	34	96	120	46	72	53	22	197	5,0	
FAN26Q3	26	1"	36	104	130	49	78	57	23	213	6,0	
FAN28Q3	28	1" 1/8	39	112	140	53	84	62	25	230	8,0	
FAN30Q3	30	1" 3/16	42	120	150	57	90	66	27	246	9.5	
FAN32Q3	32	1" 1/4	45	128	160	61	96	70	29	262	12,0	
FAN34Q3	34	1" 3/8	48	136	170	65	102	75	31	279	14,0	
FAN36Q3	36	1" 7/16	50	144	180	68	108	79	32	295	17,0	
FAN38Q3	38	1" 1/2	53	152	190	72	114	84	34	312	20,0	
FAN40Q3	40	1" 9/16	56	160	200	76	120	88	36	328	23.5	
FAN42Q3	42	1" 5/8	59	168	210	80	126	92	38	344	26.5	
FAN44Q3	44	1" 3/4	62	176	220	84	132	97	40	361	31,0	
FAN46Q3	46	1" 13/16	64	184	230	87	138	101	41	377	35,0	
FAN48Q3	48	1" 7/8	67	192	240	91	144	106	43	394	40,0	
FAN50Q3	50	1" 15/16	70	200	250	95	150	110	45	410	45,0	
FAN52Q3	52	2" 1/16	73	208	260	99	156	114	47	426	55,0	
FAN54Q3	54	2" 1/8	76	216	270	103	162	119	49	443	57,0	
FAN56Q3	56	2" 3/16	78	224	280	106	168	123	50	459	63,0	
FAN58Q3	58	2" 1/4	81	232	290	110	174	128	52	476	70,0	
FAN60Q3	60	2" 3/8	84	240	300	114	180	132	54	492	78,0	
FAN62Q3	62	2" 7/16	87	248	310	118	186	136	56	508	87,0	
FAN64Q3	64	2" 1/2	90	256	320	122	192	141	58	525	94,0	
FAN66Q3	66	2" 9/16	92	264	330	125	198	145	59	541	102,0	
FAN68Q3	68	2" 11/16	95	272	340	129	204	150	61	558	111,0	
FAN70Q3	70	2" 3/4	98	280	350	133	210	154	63	574	125,0	
FAN73Q3	73	2" 7/8	102	292	365	139	219	161	66	599	140,0	
FAN76Q3	76	3"	106	304	380	144	228	167	68	623	154,0	
FAN78Q3	78	3" 1/16	109	312	390	148	234	172	70	640	166,0	
FAN81Q3	81	3" 3/16	113	324	405	154	243	178	73	664	183,0	
FAN84Q3	84	3" 5/16	118	336	420	160	252	185	76	689	190,0	
FAN87Q3	87	3" 7/16	122	348	435	165	261	191	78	713	218,0	
FAN90Q3	90	3" 1/2	126	360	450	171	270	198	81	738	243,0	
FAN92Q3	92	3" 5/8	129	368	460	175	276	202	83	754	258,0	
FAN95Q3	95	3" 3/4	133	380	475	181	285	209	86	779	290,0	
FAN97Q3	97	3" 13/16	136	388	485	184	291	213	87	795	292,0	
FANA0Q3	100	3" 15/16	140	400	500	190	300	220	90	820	321,0	

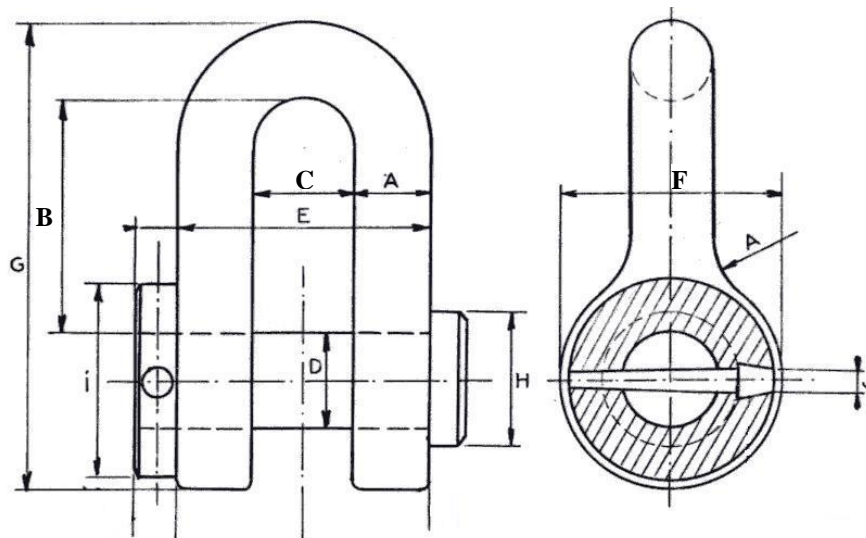


-6/ FRENCH STANDARD MOORING SHACKLE WITH PIN



Ref : FAKIN

For chain with end link



CODE ARTICLE	For chain:	Dimensions millimeters										weight	
		A	B	C	D	E	F	G	H	I	J	K	Kg
FAKIN5900	15	17	50	21	21	55	48	102	30	42	4,5	9	0,91
FAKIN5000	20	22	68	28	28	72	64	136	40	56	6	12	2,02
FAKIN5200	25	28	85	35	35	90	80	170	50	70	7,5	15	3,8
FAKIN5400	30	33	102	42	42	108	96	204	60	84	9	18	6,3
FAKIN5600	35	39	118	49	49	127	112	238	70	98	11	21	10,5
FAKIN6400	40	44	136	56	56	144	128	272	80	112	12	24	20,2

CARLIER CHAINES



37 rue Roger SALENGRO - BP10145 - 59733 - St AMAND LES EAUX - FRANCE
DA79.01 ind 02

Tel: 00 33 (0)3 27 48 12 00

Fax: 00 33 (0)3 27 48 95 27

mail : info@carlier-chain.com



-6/ SPECIAL MARKING- BUOYS SHACKLES



Ref: FDS

Superior quality shackles designed for long term mooring of marking buoys and every strong connection in the marine work;

Specially designed for a very good resistance to wear and corrosion in hard sea conditions, the reinforced body and axle are all forged in the same manganese alloy steel material (din 17115)

The different parts are mounted with no play to have along life in the sea.

The big conical pin has a strong diameter and a "T" form for the easy handling (with gloves).

The visual inspection of the shackle is very easy due to the external position of the pin

For the mounting / need a hammer to fit in axle and bend the pin

For dismantling / need to cut the pin near the axle and to take it off with a hammer.



CODE ARTICLE	chain diam	CMU	CE	BL	body diam	Inside height	Inside width	Head	Oval axle	Pin	Weight kg
	DN	SWL	PL		A	B	C	E	D1xD2	F	
	mm	kn	kn	Kn	mm	mm	mm	mm	mm	mm	
FDSLUIT16	16	33	67	161	22	85	45	54	33x22	10.89	2
FDSLUIT20	20	46	93	228	25	103	50	63	38x25	10.89	3
FDSLUIT22	22	63	126	305	32	105	50	76	44,5X32	10,89	5
FDSLUIT25	25	81	162	394	35	133	65	87	53,5X35	14.35	7,5
FDSLUIT29	30	95	190	568	38	137	65	96	55X38	14.35	9
FDSLUIT32	35	130	266	644	45	140	65	109	67X45	14.35	14
FDSLUIT38	40	260	523	908	50	155	65	122	67X50	14.35	20

CARLIER CHAINES



37 rue Roger SALENGRO - BP10145 - 59733 - St AMAND LES EAUX - FRANCE
DA79.01 ind 02

Tel: 00 33 (0)3 27 48 12 00

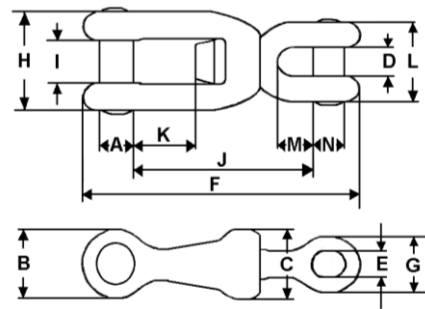
Fax: 00 33 (0)3 27 48 95 27

mail : info@carlier-chain.com



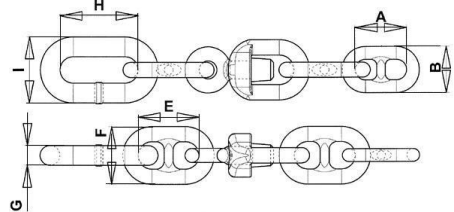
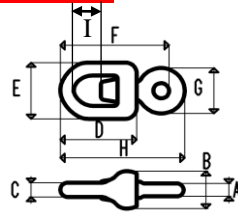
-7/ JAW AND JAW SWIVEL SHACKLE

This swivel shackle, fitted directly between the chain cable and the anchor, avoids the use of an anchor shackle and a kenter Link if the chain is fitted with an end link.



Code article	Nominal diameter DN		Jaw and jaw swivel													
			A	B	C	D	E	F	G	H	I	J	K	L	M	N
	mm	Inches	mm	mm	mm	mm	mm	mm	mm	mm	mm	mm	mm	mm	mm	mm
ECC14Q3	14	9/16	24	48	49	20	17	198	39	70	31,0	129	44	56	25	22
ECC16Q3	16	5/8	27	54	56	22	19	227	45	80	35,0	147	50	64	29	26
ECC18Q3	17,5	11/16	30	60	61	25	21	248	49	88	39,0	161	55	70	32	28
ECC19Q3	19	3/4	32	65	67	27	23	269	54	95	42,0	175	60	76	34	30
ECC20Q3	20,5	13/16	35	70	72	29	25	290	58	103	45,0	189	65	82	37	33
ECC22Q3	22	7/8	37	75	77	31	26	312	62	110	48,0	202	69	88	40	35
ECC24Q3	24	15/16	41	82	84	34	29	340	68	120	53,0	221	76	96	43	38
ECC26Q3	26	1"	44	88	91	36	31	368	73	130	57,0	239	82	104	47	42
ECC28Q3	28	1" 1/8	48	95	98	39	34	396	79	140	62,0	258	88	112	50	45
ECC30Q3	30	1" 3/16	51	102	105	42	36	425	85	150	66,0	276	95	120	54	48
ECC32Q3	32	1" 1/4	54	109	112	45	38	453	90	160	70,0	294	101	128	58	51
ECC34Q3	34	1" 3/8	58	116	119	48	41	481	96	170	75,0	313	107	136	61	54
ECC36Q3	36	1" 7/16	61	122	126	50	43	510	102	180	79,0	331	113	144	65	58
ECC38Q3	38	1" 1/2	65	129	133	53	46	538	107	190	84,0	350	120	152	68	61
ECC40Q3	40	1" 9/16	68	136	140	56	48	566	113	200	88,0	368	126	160	72	64
ECC42Q3	42	1" 5/8	71	143	147	59	50	595	118	210	92,0	386	132	168	76	67
ECC44Q3	44	1" 3/4	75	150	154	62	53	623	124	220	97,0	405	139	176	79	70
ECC46Q3	46	1" 13/16	78	156	161	64	55	651	130	230	101,0	423	145	184	83	74
ECC48Q3	48	1" 7/8	82	163	168	67	58	680	135	240	106,0	442	151	192	86	77
ECC50Q3	50	1" 15/16	85	170	175	70	60	708	141	250	110,0	460	158	200	90	80
ECC52Q3	52	2" 1/16	88	177	182	73	62	736	147	260	114,0	478	164	208	94	83
ECC54Q3	54	2" 1/8	92	184	189	76	65	765	152	270	119,0	497	170	216	97	86
ECC56Q3	56	2" 3/16	95	190	196	78	67	793	158	280	123,0	515	176	224	101	90
ECC58Q3	58	2" 1/4	99	197	203	81	70	821	164	290	128,0	534	183	232	104	93
ECC60Q3	60	2" 3/8	102	204	210	84	72	850	169	300	132,0	552	189	240	108	96
ECC62Q3	62	2" 7/16	105	211	217	87	74	878	175	310	136,0	570	195	248	112	99
ECC64Q3	64	2" 1/2	109	218	224	90	77	906	180	320	141,0	589	202	256	115	102
ECC66Q3	66	2" 9/16	112	224	231	92	79	935	186	330	145,0	607	208	264	119	106
ECC68Q3	68	2" 11/16	116	231	238	95	82	963	192	340	150,0	626	214	272	122	109
ECC70Q3	70	2" 3/4	119	238	245	98	84	991	197	350	154,0	644	221	280	126	112
ECC73Q3	73	2" 7/8	124	248	256	102	88	1034	206	365	161,0	672	230	292	131	117
ECC76Q3	76	3"	129	258	266	106	91	1076	214	380	167,0	699	239	304	137	122
ECC78Q3	78	3" 1/16	133	265	273	109	94	1104	220	390	172,0	718	246	312	140	125
ECC81Q3	81	3" 3/16	138	275	284	113	97	1147	228	405	178,0	745	255	324	146	130
ECC84Q3	84	3" 5/16	143	286	294	118	101	1189	237	420	185,0	773	265	336	151	134
ECC87Q3	87	3" 7/16	148	296	305	122	104	1232	245	435	191,0	800	274	348	157	139
ECC90Q3	90	3" 1/2	153	306	315	126	108	1274	254	450	198,0	828	284	360	162	144
ECC92Q3	92	3" 5/8	156	313	322	129	110	1303	259	460	202,0	846	290	368	166	147
ECC95Q3	95	3" 3/4	162	323	333	133	114	1345	268	475	209,0	874	299	380	171	152
ECC97Q3	97	3" 13/16	165	330	340	136	116	1374	274	485	213,0	892	306	388	175	155
ECC100Q3	100	3" 15/16	170	340	350	140	120	1416	282	500	220,0	920	315	400	180	160

-7/ End swivel for stud link chain



CODE	DN		Swivel									Common link		Enlarged link		End link			weight kg	
	Nominal Size		A	B	C	D	E	F	G	H	I	A	B	C	E	F	G	H		I
ARTICLE	mm	Inches	mm	mm	mm	mm	mm	mm	mm	mm	mm	mm	mm	mm	mm	mm	mm	mm	mm	mm
EX14Q3	14	9/16	15	48	17	88	66	104	50	136	21	56	50	15	60	56	18	61	56	2,9
EX16Q3	16	5/8	18	54	19	101	75	118	58	155	24	64	58	18	68	64	20	75	72	3,7
EX17Q3	18	11/16	19	60	21	110	82	130	63	170	26	70	63	19	74	70	20	75	72	4,4
EX19Q3	19	3/4	21	65	23	120	89	141	68	184	29	76	68	21	81	76	22	83	76	5,5
EX20Q3	20,5	13/16	23	70	25	129	96	152	74	199	31	82	74	23	87	82	25	89	82	7,6
EX22Q3	22	7/8	24	75	26	139	103	163	79	213	33	88	79	24	94	88	26	96	88	8,1
EX24Q3	24	15/16	26	82	29	151	113	178	86	233	36	96	86	26	102	96	30	104	96	11
EX26Q3	26	1"	29	88	31	164	122	192	94	252	39	104	94	29	111	104	32	113	104	13,9
EX28Q3	28	1" 1/8	31	95	34	176	132	207	101	272	42	112	101	31	119	112	35	122	112	17,2
EX30Q3	30	1" 3/16	33	102	36	189	141	222	108	291	45	120	108	33	128	120	35	131	120	20,9
EX32Q3	32	1" 1/4	35	109	38	202	150	237	115	310	48	128	115	35	136	128	38	139	128	25,4
EX34Q3	34	1" 3/8	37	116	41	214	160	252	122	330	51	136	122	37	145	136	42	148	136	30,7
EX36Q3	36	1" 7/16	40	122	43	227	169	266	130	349	54	144	130	40	153	144	44	157	144	36,9
EX38Q3	38	1" 1/2	42	129	46	239	179	281	137	369	57	152	137	42	162	152	46	165	152	43,5
EX40Q3	40	1" 9/16	44	136	48	252	188	296	144	388	60	160	144	44	170	160	48	174	160	50,4
EX42Q3	42	1" 5/8	46	143	50	265	197	311	151	407	63	168	151	46	179	168	50	183	168	58,3
EX44Q3	44	1" 3/4	48	150	53	277	207	326	158	427	66	176	158	48	187	176	52	191	176	67,1
EX46Q3	46	1" 13/16	51	156	55	290	216	340	166	446	69	184	166	51	196	184	55	200	184	77,5
EX48Q3	48	1" 7/8	53	163	58	302	226	355	173	466	72	192	173	53	204	192	58	209	192	87,5
EX50Q3	50	1" 15/16	55	170	60	315	235	370	180	485	75	200	180	55	213	200	60	218	200	97,7
EX52Q3	52	2" 1/16	57	177	62	328	244	385	187	504	78	208	187	57	221	208	62	226	208	111
EX54Q3	54	2" 1/8	59	184	65	340	254	400	194	524	81	216	194	59	230	216	65	235	216	124,3
EX56Q3	56	2" 3/16	62	190	67	353	263	414	202	543	84	224	202	62	238	224	68	244	224	139,4
EX58Q3	58	2" 1/4	64	197	70	365	273	429	209	563	87	232	209	64	247	232	70	252	232	154,4
EX60Q3	60	2" 3/8	66	204	72	378	282	444	216	582	90	240	216	66	255	240	72	261	240	171
EX62Q3	62	2" 7/16	68	211	74	391	291	459	223	601	93	248	223	68	264	248	75	270	248	189,3
EX64Q3	64	2" 1/2	70	218	77	403	301	474	230	621	96	256	230	70	272	256	76	278	256	206,6
EX66Q3	66	2" 9/16	73	224	79	416	310	488	238	640	99	264	238	73	281	264	80	287	264	228,4
EX68Q3	68	2" 11/16	75	231	82	428	320	503	245	660	102	272	245	75	289	272	82	296	272	249,1
EX70Q3	70	2" 3/4	77	238	84	441	329	518	252	679	105	280	252	77	298	280	85	305	280	269,6
EX73Q3	73	2" 7/8	80	248	88	460	343	540	263	708	110	292	263	80	310	292	88	318	292	307,5
EX76Q3	76	3"	84	258	91	479	357	562	274	737	114	304	274	84	323	304	90	331	304	349,7
EX78Q3	78	3" 1/16	86	265	94	491	367	577	281	757	117	312	281	86	332	312	94	339	312	377,3
EX81Q3	81	3" 3/16	89	275	97	510	381	599	292	786	122	324	292	89	344	324	97	352	324	420
EX84Q3	84	3" 5/16	92	286	101	529	395	622	302	815	126	336	302	92	357	336	101	365	336	454,7
EX87Q3	87	3" 7/16	96	296	104	548	409	644	313	844	131	348	313	96	370	348	104	378	348	496,5
EX90Q3	90	3" 1/2	99	306	108	567	423	666	324	873	135	360	324	99	383	360	108	392	360	555,3
EX92Q3	92	3" 5/8	101	313	110	580	432	681	331	892	138	368	331	101	391	368	110	400	368	604,9
EX95Q3	95	3" 3/4	105	323	114	599	447	703	342	922	143	380	342	105	404	380	114	413	380	662
EX97Q3	97	3" 13/16	107	330	116	611	456	718	349	941	146	388	349	107	412	388	116	422	388	701
EXA0Q3	100	3" 15/16	110	340	120	630	470	740	360	970	150	400	360	110	425	400	120	435	400	768,3

CARLIER CHAINES



37 rue Roger SALENGRO - BP10145 - 59733 - St AMAND LES EAUX - FRANCE
DA79.01 ind 02

Tel: 00 33 (0)3 27 48 12 00

Fax: 00 33 (0)3 27 48 95 27

mail : info@carlier-chain.com

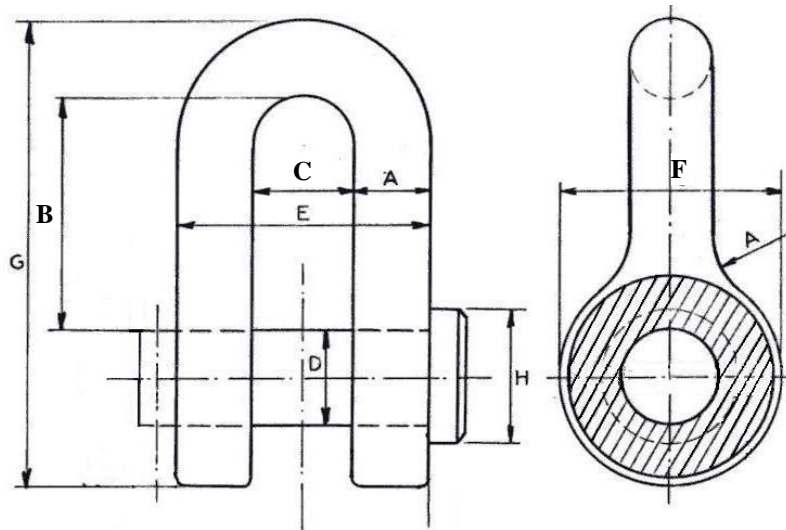


-6/ SHACKLE OF FIT WITH WELDED AXLE



Ref: **FAKIN**

For chain with enlarged end link



CODE ARTICLE	For chain:	Dimensions millimeters										weight
		A	B	C	D	E	F	G	H	I	K	Kg
FAKIN5900	15	17	50	21	21	55	48	102	30	42	9	0,91
FAKIN5100	20	22	68	28	28	72	64	136	40	56	12	2,02
FAKIN5300	25	28	85	35	35	90	80	170	50	70	15	3,8
FAKIN5500	30	33	102	42	42	108	96	204	60	84	18	6,3
FAKIN5700	35	39	118	49	49	127	112	238	70	98	21	10,5
FAKIN6300	40	44	136	56	56	144	128	272	80	112	24	22

CARLIER CHAINES



37 rue Roger SALENGRO - BP10145 - 59733 - St AMAND LES EAUX - FRANCE
DA79.01 ind 02

Tel: 00 33 (0)3 27 48 12 00

Fax: 00 33 (0)3 27 48 95 27

mail : info@carlier-chain.com

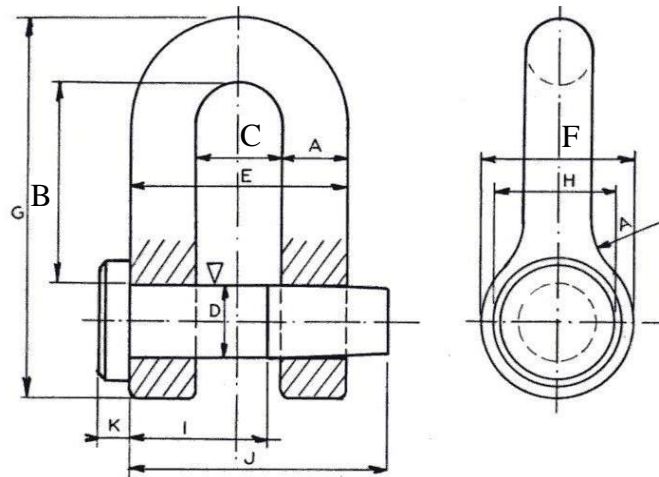


-6/ SHACKLE OF FIT WITH WELDED AXLE



Ref: **FAKIN**

For chain without enlarged end link



CODE ARTICLE	For chain:	Dimensions millimeters											weight
		A	B	C	D	E	F	G	H	I	J	K	Kg
FAKIN5800	15	17	50	21	18	55	37	95	30	35	65	7,5	2
FAKIN5000	20	22	67	28	24	72	50	126	40	46	86	10	2.1
FAKIN6000	25	28	83	35	30	90	63	158	50	58	108	13	2,7
FAKIN6100	30	33	100	42	36	108	75	189	60	69	130	15	4,9
FAKIN6200	35	39	116	49	42	127	88	220	70	81	152	18	7,7
FAKIN6400	40	44	132	56	48	144	100	252	80	92	174	20	20.2

CARLIER CHAINES



37 rue Roger SALENGRO - BP10145 - 59733 - St AMAND LES EAUX - FRANCE
DA79.01 ind 02

Tel: 00 33 (0)3 27 48 12 00

Fax: 00 33 (0)3 27 48 95 27

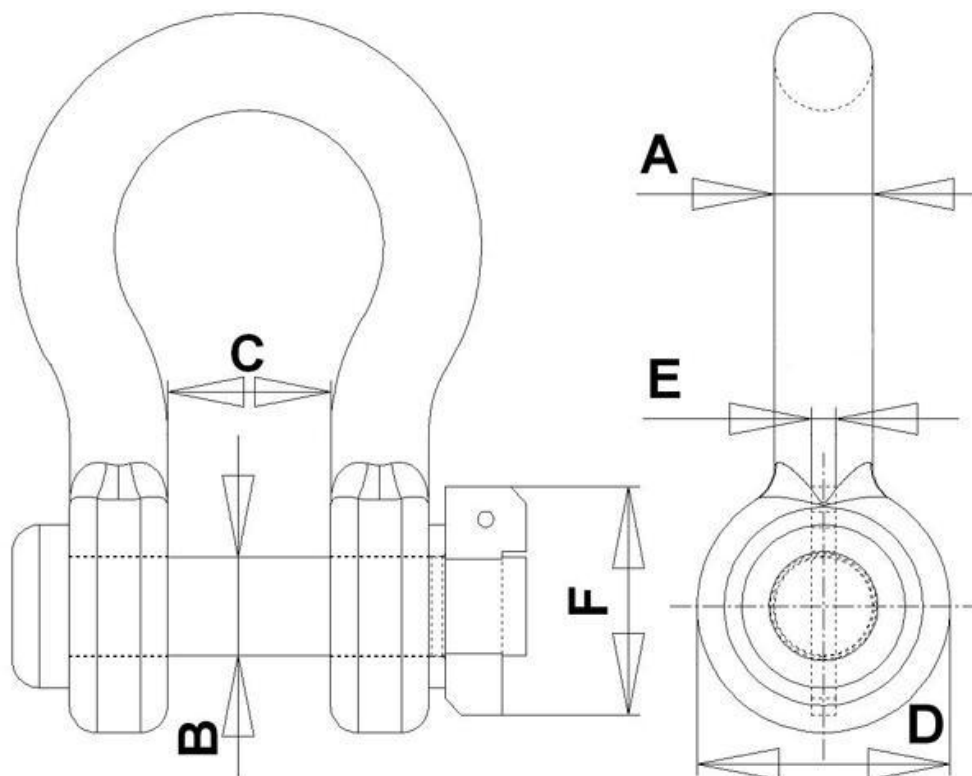
mail : info@carlier-chain.com



-6/ "CLINCH" SHACKLE



Ref: FEKUR



CODE ARTICLE	Dimensions millimeters							weight Kg
	For chain:	DIAM CORPS A	DIAM AXE B	OUVERTURE C	DIAM tete D	EP clavette E	LONG clavette F	
FEKUR5000	20	24	24	40	63	6	56	2,2
FEKUR5100	25	30	30	50	76	8	70	4,85
FEKUR5200	30	36	36	60	93	9	84	8
FEKUR5300	35	42	42	70	112	10	98	13,9
FEKUR5500	40	48	48	80	124	12	112	19,8
FEKUR5600	44	52,8	52,8	88	136	14	125	27

Other dimensions please ask

CARLIER CHAINES



37 rue Roger SALENGRO - BP10145 - 59733 - St AMAND LES EAUX - FRANCE
DA79.01 ind 02

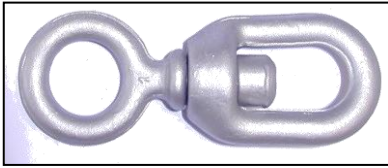
Tel: 00 33 (0)3 27 48 12 00

Fax: 00 33 (0)3 27 48 95 27

mail : info@carlier-chain.com



-7/:SWIVEL TYPES FOR MOORING APPLICATION



SWIVEL STANDARD BIG EYE



SWIVEL STANDARD SMALL EYE



SWIVEL END FOR STUD LINK CHAIN



SWIVEL FORERUNNERS



SWIVEL MECANO-WELDED PB



SWIVEL TYPE "GUERIGNY"



SWIVEL WITH A BEARING



-7/ SWIVEL "MECANO WELDED"



Ref : EDGxx

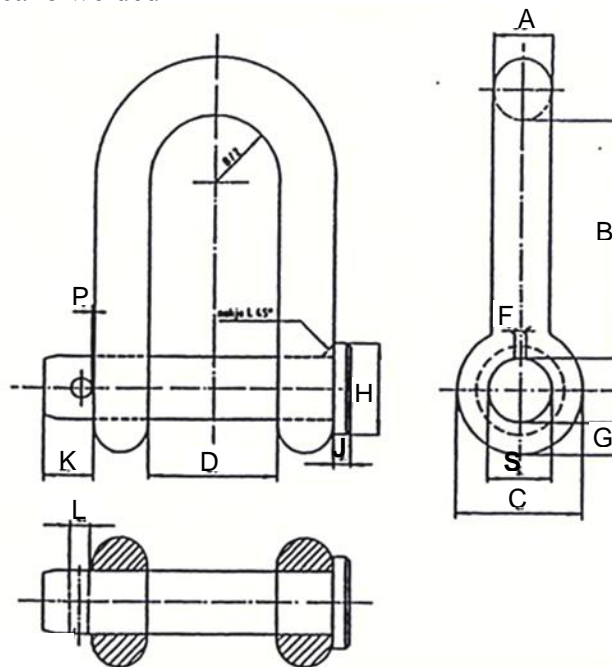
emerillon swivel	calibre de chaine for chain dia	Diam EXT	LG UTILE length	section du piton	diam œil eye dia	Poids weight	CE charge épreuve Proof Load	CR charge rupture Breaking Load
	mm	A	B	C	D	kg	KN	KN
ED25WARTEL	25	36	218	80	41	9,5	197	394
ED29WARTEL	30	42	253	90	47	14	284	568
ED32WARTEL	35	45	279	100	52	19	322	644

This swivel designed for long term mooring of marking buoys.



A compact and massive swivel for a very good resistance to the corrosion
Manufacturing with alloy steel HR. Application of Protective paint

Shackle for swivel "Mecano welded"



	SHACKLE											
CODE ARTICLE	D	A	B	C	F	G	H	J	K	L	P	S
FRSLUIT25	25	35	143	78	83	20	57	11	30	14,4	1-1,5	39
FRSLUIT29	30	38	167	91	94	21	67	13	36	14,4	1-1,5	45
FRSLUIT32	35	45	183	102	104	26	74	14	36	14,4	1-1,5	50

CARLIER CHAINES



37 rue Roger SALENGRO - BP10145 - 59733 - St AMAND LES EAUX - FRANCE
DA79.01 ind 02

Tel: 00 33 (0)3 27 48 12 00

Fax: 00 33 (0)3 27 48 95 27

mail : info@carlier-chain.com



-6/ STANDARD HIGH RESISTANCE SHACKLE WITH BOLT



Safety dee type & bow type
With axle bolt & pin (US fed specif)

Safety factor= 6 up to 85T ; above SF = 5
High resistance forged steel
Head of shackle is double diameter as bolt diameter

Ref : FHDBxxx



Ref : FHLBxxx



CODE ARTICLE	CMU SWL T	common dimensions				Dee Shackle		Bow Shackle			CODE ARTICLE
		Diam body A		Diam axle B	jaw gap C	Inside Height L	Weight	Inside Height L'	Inside width O	Weight	
		mm	Inches	mm	mm	mm	kg	mm	mm	kg	
FHDB0010G	1	10	4/9	12	17	31	0,13	37	23	0,14	FHLB0010G
FHDB0020G	2	13	1/2	16	22	43	0,38	51	32	0,44	FHLB0020G
FHDB0032G	3,25	16	5/8	19	27	51	0,66	64	43	0,79	FHLB0032G
FHDB0047G	4,75	19	3/4	22	31	59	1,05	76	51	1,26	FHLB0047G
FHDB0065G	6,5	22	7/8	25	36	73	1,46	83	58	1,88	FHLB0065G
FHDB0085G	8,5	25	1	28	43	85	2,59	95	68	2,79	FHLB0085G
FHDB0095G	9,5	28	1" 1/8	32	47	90	3,34	108	75	3,8	FHLB0095G
FHDB0120G	12	32	1" 1/4	35	51	94	4,74	115	83	5,26	FHLB0120G
FHDB0135G	13,5	35	1" 3/8	38	57	115	6,19	133	95	7	FHLB0135G
FHDB0170G	17	38	1" 1/2	42	60	127	7,6	146	99	8,8	FHLB0170G
FHDB0250G	25	45	1" 3/4	50	74	149	12,82	178	126	15	FHLB0250G
FHDB0350G	35	50	2"	57	83	171	18,16	197	138	20,65	FHLB0350G
FHDB0425G	42,5	57	2" 1/4	65	95	190	27,8	222	160	29,3	FHLB0425G
FHDB0550G	55	65	2" 1/2	70	105	203	35,1	254	180	41	FHLB0550G
FHDB0850G	85	75	3"	80	127	230	60	330	190	64,5	FHLB0850G
FHDB1200G	120	89	3" 1/2	95	146	267	93	381	238	109,5	FHLB1200G
FHDB1500G	150	102	4"	108	165	400	145	400	275	160	FHLB1500G

CARLIER CHAINES



37 rue Roger SALENGRO - BP10145 - 59733 - St AMAND LES EAUX - FRANCE
DA79.01 ind 02

Tel: 00 33 (0)3 27 48 12 00

Fax: 00 33 (0)3 27 48 95 27

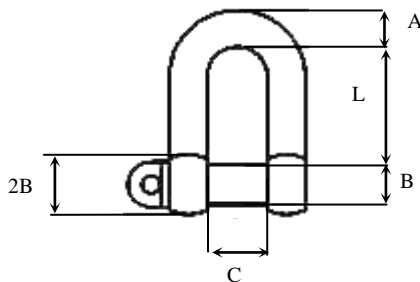
mail : info@carlier-chain.com



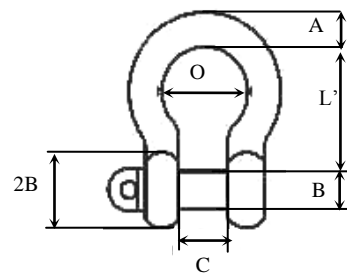
-6/ STANDARD HIGH RESISTANCE SHACKLE WITH SCREW PIN



Safety factor = 6
High resistance forged steel



Ref : FHDPxxx



Ref : FHLPxxx



CODE ARTICLE	CMU SWL T	A mm Inches	B mm	C mm	Dee Shackle			bow Shackle			CODE ARTICLE
					L mm	Poids/ Weight kg	L' mm	O mm	Poids/Weight kg		
FHDP0010G	1	10	4/9	12	17	31	0,13	37	23	0,14	FHLP0010G
FHDP0020G	2	13	1/2	16	22	43	0,38	51	32	0,44	FHLP0020G
FHDP0032G	3,25	16	5/8	19	27	51	0,66	64	43	0,79	FHLP0032G
FHDP0047G	4,75	19	3/4	22	31	59	1,05	76	51	1,26	FHLP0047G
FHDP0065G	6,5	22	7/8	25	36	73	1,46	83	58	1,88	FHLP0065G
FHDP0085G	8,5	25	1	28	43	85	2,59	95	68	2,79	FHLP0085G
FHDP0095G	9,5	28	1" 1/8	32	47	90	3,34	108	75	3,8	FHLP0095G
FHDP0120G	12	32	1" 1/4	35	51	94	4,74	115	83	5,26	FHLP0120G
FHDP0135G	13,5	35	1" 3/8	38	57	115	6,19	133	95	7	FHLP0135G
FHDP0170G	17	38	1" 1/2	42	60	127	7,6	146	99	8,8	FHLP0170G
FHDP0250G	25	45	1" 3/4	50	74	149	12,82	178	126	15	FHLP0250G
FHDP0350G	35	50	2"	57	83	171	18,16	197	138	20,65	FHLP0350G
FHDP0425G	42,5	57	2" 1/4	65	95	190	27,8	222	160	29,3	FHLP0425G
FHDP0550G	55,5	65	2" 1/2	70	105	203	35,1	254	180	41	FHLP0555G
FHDP0850G	85	75	3"	80	127	230	60	330	190	64,5	FHLP0850G
FHDP1200G	120	89	3" 1/2	95	146	267	93	381	238	109,5	FHLP1200G
FHDP1500G	150	102	4"	108	165	400	145	400	275	160	FGLP1500G

CARLIER CHAINES



37 rue Roger SALENGRO - BP10145 - 59733 - St AMAND LES EAUX - FRANCE
DA79.01 ind 02

Tel: 00 33 (0)3 27 48 12 00

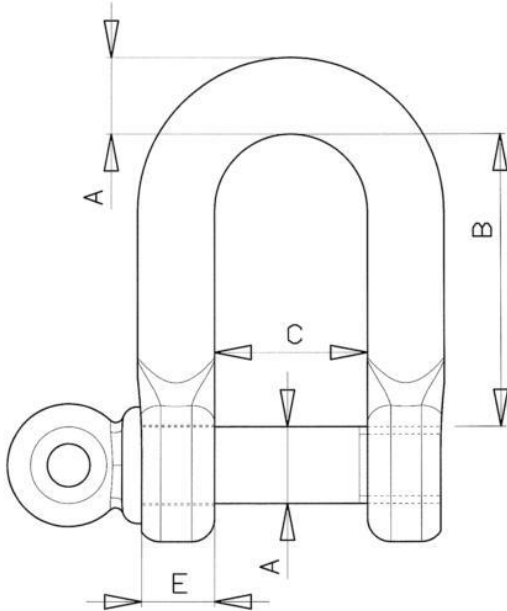
Fax: 00 33 (0)3 27 48 95 27

mail : info@carlier-chain.com





Forme DROITE /DEE TYPE

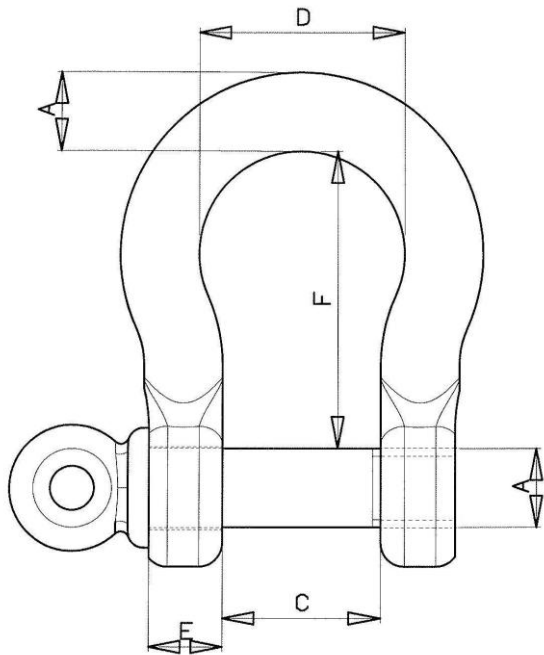


CODE ARTICLE		CMU	Charge de rupture mini	Calibre				POIDS EN KG
droite FHSTDD--"--				A	B	C	E	
à boulon	à piton			Droite				
FHSTDDDB0005	FHSTDDDP0005	0T100	0T600	5	19	10	5	0,015
FHSTDDDB0001	FHSTDDDP0001	0T160	0T960	6	20	12	6	0,025
FHSTDDDB0002	FHSTDDDP0002	0T250	1T500	8	28	16	8	0,055
FHSTDDDB0004	FHSTDDDP0004	0T400	2T400	10	35	20	9	0,105
FHSTDDDB0006	FHSTDDDP0006	0T630	3T780	12	44	24	11	0,180
FHSTDDDB0008	FHSTDDDP0008	0T800	4T800	14	44	28	12	0,290
FHSTDDDB0010	FHSTDDDP0010	1T	6T	16	57	32	14	0,455
FHSTDDDB0012	FHSTDDDP0012	1T250	7T500	18	59	36	16	0,635
FHSTDDDB0016	FHSTDDDP0016	1T600	9T600	20	65	40	18	0,860
FHSTDDDB0020	FHSTDDDP0020	2T	12T	22	72	44	19	1,120
FHSTDDDB0025	FHSTDDDP0025	2T500	15T	24	80	48	21	1,520
FHSTDDDB0031	FHSTDDDP0031	3T150	18T90	27	89	54	24	2,150
FHSTDDDB0040	FHSTDDDP0040	4T	24T	30	99	60	26	2,830
FHSTDDDB0050	FHSTDDDP0050	5T	30T	33	103	66	29	3,700
FHSTDDDB0063	FHSTDDDP0063	6T300	37T800	36	111	72	32	4,800
FHSTDDDB0071	FHSTDDDP0071	7T100	42T600	39	126	78	34	6,000





FORME LYRE / BOW TYPE

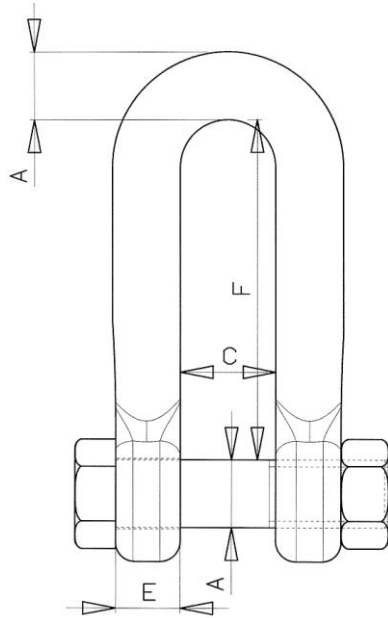


CODE ARTICLE		CMU	Charge de rupture mini	Calibre A	D	C	F	E	Poids En Kg
lyre FHSTDL--"--									
à boulon	à piton								
FHSTDLB0005	FHSTDLP0005	0T100	0T600	5	15	10	25	5	0,017
FHSTDLB0001	FHSTDLP0001	0T160	0T960	6	18	12	29	6	0,030
FHSTDLB0002	FHSTDLP0002	0T250	1T500	8	23	16	33	8	0,065
FHSTDLB0004	FHSTDLP0004	0T400	2T400	10	28	20	42	9	0,115
FHSTDLB0006	FHSTDLP0006	0T630	3T780	12	36	24	55	11	0,215
FHSTDLB0008	FHSTDLP0008	0T800	4T800	14	42	28	62	12	0,350
FHSTDLB0010	FHSTDLP0010	1T	6T	16	48	32	71	14	0,530
FHSTDLB0012	FHSTDLP0012	1T250	7T500	18	54	36	81	16	0,710
FHSTDLB0016	FHSTDLP0016	1T600	9T600	20	60	40	90	18	1,010
FHSTDLB0020	FHSTDLP0022	2T	12T	22	66	44	89	19	1,260
FHSTDLB0025	FHSTDLP0025	2T500	15T	24	71	48	95	21	1,600
FHSTDLB0031	FHSTDLP0031	3T150	18T90	27	80	54	106	24	2,420
FHSTDLB0040	FHSTDLP0040	4T	24T	30	89	60	118	26	3,230
FHSTDLB0050	FHSTDLP0050	5T	30T	33	100	66	128	29	4,250
FHSTDLB0063	FHSTDLP0063	6T300	37T800	36	106	72	143	32	5,700
FHSTDLB0071	FHSTDLP0071	7T100	42T600	39	113	78	153	34	7,100





FORME DROITE / DEE TYPE

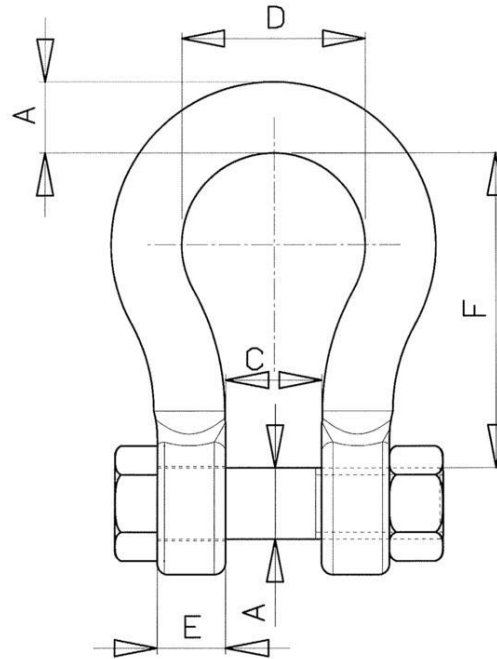


CODE ARTICLE	CODE ARTICLE	CMU	Charge de rupture mini	Calibre A	B	C	D	E	F	POIDS EN KG
droite à boulon	droite à piton									Droite
FHAFNDB0001	FHAFNDP0001	0T160	0T960	6	21	9	15	6	25	0,025
FHAFNDB0002	FHAFNDP0002	0T250	1T500	8	30	12	19	8	29	0,055
FHAFNDB0004	FHAFNDP0004	0T400	2T400	10	36	15	23	9	36	0,105
FHAFNDB0006	FHAFNDP0006	0T630	3T780	12	44	18	28	11	43	0,180
FHAFNDB0008	FHAFNDP0008	0T800	4T800	14	47	21	32	12	50	0,290
FHAFNDB0010	FHAFNDP0010	1T	6T	16	58	24	37	14	55	0,455
FHAFNDB0012	FHAFNDP0012	1T250	7T500	18	61	27	41	16	53	0,635
FHAFNDB0016	FHAFNDP0016	1T600	9T600	20	67	30	44	18	64	0,860
FHAFNDB0020	FHAFNDP0020	2T	12T	22	74	33	49	19	71	1,120
FHAFNDB0025	FHAFNDP0025	2T500	15T	24	81	36	53	21	77	1,520
FHAFNDB0031	FHAFNDP0031	3T150	18T900	27	91	41	60	24	88	2,150
FHAFNDB0040	FHAFNDP0040	4T	24T	30	100	45	66	26	97	2,830
FHAFNDB0050	FHAFNDP0050	5T	30T	33	105	50	72	29	102	3,700
FHAFNDB0063	FHAFNDP0063	6T300	37T800	36	113	54	80	32	113	4,800
FHAFNDB0071	FHAFNDP0071	7T	42T	39	129	59	86	34	123	6,000
FHAFNDB0080	FHAFNDP0080	8T	48T	42	146	63	93	37	139	7,000
FHAFNDB0100	FHAFNDP0100	10T	60T	45	153	68	99	40	147	9,000
FHAFNDB0112	FHAFNDP0112	11T200	67T200	157	157	72		42		11,000





FORME LYRE/BOW TYPE



CODE ARTICLE	CODE ARTICLE	CMU	Charge de rupture mini	Calibre A	B	C	D	E	F	POIDS EN KG
lyre à piton	lyre à piton									Lyre
FHAFNLB0001	FHAFNLP0001	0T160	0T950	6	21	9	15	6	25	0,030
FHAFNLB0002	FHAFNLP0002	0T250	1T500	8	30	12	19	8	29	0,065
FHAFNLB0004	FHAFNLP0004	0T400	2T400	10	36	15	23	9	36	0,115
FHAFNLB0006	FHAFNLP0006	0T630	3T780	12	44	18	28	11	43	0,215
FHAFNLB0008	FHAFNLP0008	0T800	4T800	14	47	21	32	12	50	0,350
FHAFNLB0010	FHAFNLP0010	1T	6T	16	58	24	37	14	55	0,530
FHAFNLB0025	FHAFNLP0025	1T250	7T500	18	61	27	41	16	53	0,710
FHAFNLB0016	FHAFNLP0016	1T600	9T600	20	67	30	44	18	64	1,010
FHAFNLB0020	FHAFNLP0020	2T	12T	22	74	33	49	19	71	1,260
FHAFNLB0025	FHAFNLP0025	2T500	15T	24	81	36	53	21	77	1,600
FHAFNLB0031	FHAFNLP0031	3T150	18T900	27	91	41	60	24	88	2,420
FHAFNLB0040	FHAFNLP0040	4T	24T	30	100	45	66	26	97	3,230
FHAFNLB0050	FHAFNLP0050	5T	30T	33	105	50	72	29	102	4,250
FHAFNLB0063	FHAFNLP0063	6T300	37T800	36	113	54	80	32	113	5,700
FHAFNLB0071	FHAFNLP0071	7T	42T	39	129	59	86	34	123	7,100
FHAFNLB0080	FHAFNLP0080	8T	48T	42	146	63	93	37	139	6,500
FHAFNLB0100	FHAFNLP0100	10T	60T	45	153	68	99	40	147	9,000
FHAFNLB0112	FHAFNLP0112	11T200	67T200	157	157	72		42		

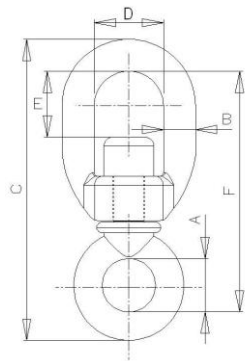


-7/ STANDARD SWIVEL BIG OR SMALL EYE



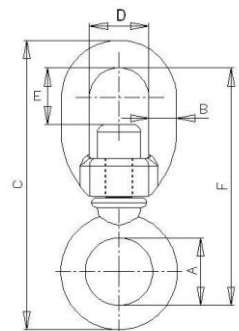
SMALL EYE / A PETIT OEIL :

CODE ARTICLE	CMU	Charge de rupture mini	N°	DIAM B	D	E	A	C	F	POIDS EN KG
EPO07	0T150	0T750	0	7	17	18	12	76	62	0,080
EPO08	0T235	1T175	0	8	18	20	13	89	72	0,130
EPO10	0T350	1T750	0	10	25	25	15	105	85	0,250
EPO12	0T600	3T000	1	12	29	32	17	130	104	0,470
EPO15	1T000	5T000	2	15	35	36	20	150	118	0,700
EPO18	1T750	8T750	3	18	37	39	23	166	132	0,960
EPO20	2T500	12T500	4	20	42	45	27	190	152	1,400
EPO22	3T300	16T500	4 BIS	22	47	50	32	216	172	2,000
EPO25	4T000	20T000	5	25	54	57	35	240	192	2,930
EPO28	5T000	25T000	5 BIS	28	57	63	42	275	218	4,115
EPO32	6T300	31T500	6	32	69	78	42	312	250	6,000



BIG EYE / A GRAND OEIL :

CODE ARTICLE	CMU	Charge de rupture mini	N°	DIAM B	D	E	A	C	F	POIDS EN KG
EGO10	0T350	1T750	0	10	25	25	23	110	90	0,250
EGO12	0T600	3T000	1	12	29	32	32	152	126	0,500
EGO15	1T000	5T000	2	15	35	36	37	170	140	0,720
EGO18	1T750	8T750	3	18	37	39	45	196	162	1,100
EGO20	2T500	12T500	4	20	42	45	50	220	183	1,570
EGO22	3T300	16T500	4 BIS	22	47	50	53	240	200	2,100
EGO25	4T000	20T000	5	25	54	57	58	270	222	3,000



CARLIER CHAINES



37 rue Roger SALENGRO - BP10145 - 59733 - St AMAND LES EAUX - FRANCE
DA79.01 ind 02

Tel: 00 33 (0)3 27 48 12 00

Fax: 00 33 (0)3 27 48 95 27

mail : info@carlier-chain.com



-7/ SWIVEL HIGH RESISTANCE



With big eye

Material : high tensile forged steel

Finish: galvanised

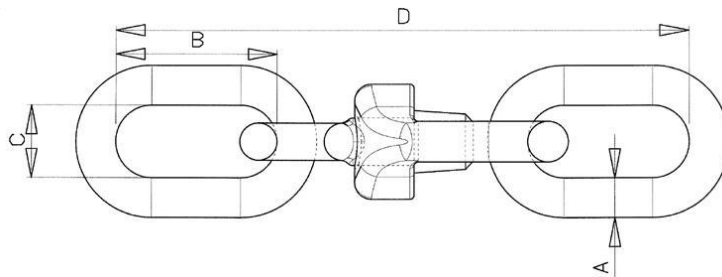
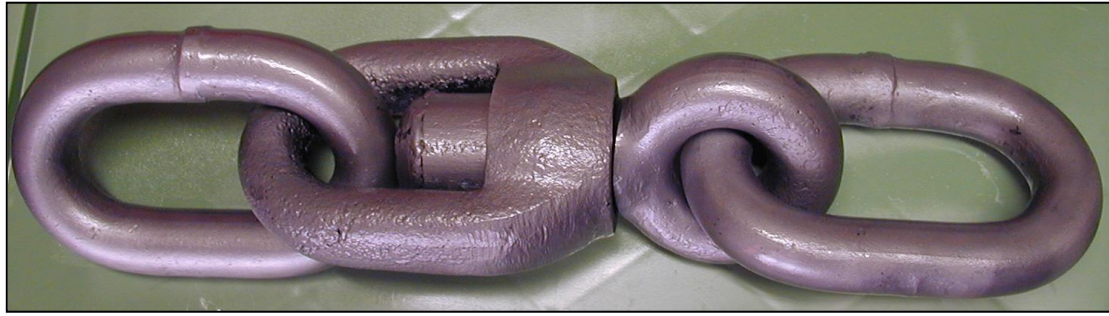


CODE ARTICLE	CMU	A	B	C	D	E	Weight
	T	mm	mm	mm	mm	mm	KG
	0T390	6	16	19	17	62	0,070
	0T570	8	18	24	21	74	0,130
	1T020	10	24	30	26	92	0,250
	1T600	12	35	37	35	127	0,650
	2T400	16	38	44	40	145	1,000
	3T300	19	45	50	45	165	1,800
	4T500	22	45	55	50	185	2,800
	5T700	25	55	62	57	200	4,000
	8T200	32	72	79	66	250	7,600
	20T500	38	75	97	108	330	22,500



-7/ SWIVEL FORERUNNERS

Ref: EAKOUxx



Tough & strong construction in mangan steel

Assembly by forging back & welding

Individually tested

Proof load and breaking load following chain grade 3 of corresponding diameter

Protected by black varnish or hot deep galvanised to BS729

CODE ARTICLE	SWIVEL FORERUNNER					
	CHAIN DIAM	Dimensions of links			Length of forerunner	Weight Kg
		Dia A	Width B	C		
EAKOU5400	16	20	71	30	272	3,67
EAKOU5000	20	25	94	40	350	5,4
EAKOU5100	25	30	118	50	438	9,85
EAKOU5200	30	35	140	60	523	16,48
EAKOU5300	35	42	165	70	613	26,6
EAKOU5500	40	50	190	90	704	38
EAKOU5550	45	55	200	77	740	58
EAKOU5600	50	60	218	80	716	72
EAKOU5650	60	72	261	96	858	126
EAKOU5700	66	80	287	104	944	170

Other dimensions please ask

CARLIER CHAINES



37 rue Roger SALENGRO - BP10145 - 59733 - St AMAND LES EAUX - FRANCE
DA79.01 ind 02

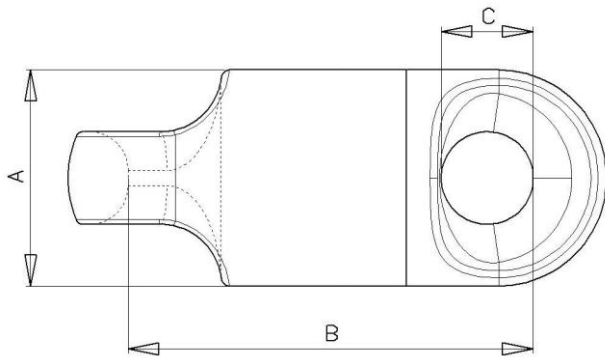
Tel: 00 33 (0)3 27 48 12 00

Fax: 00 33 (0)3 27 48 95 27

mail : info@carlier-chain.com



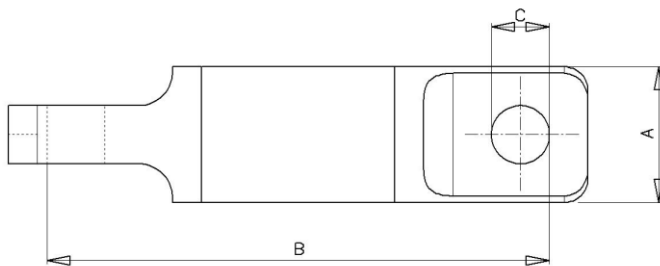
-7/ SWIVEL GUERIGNY



These swivels are fitted on the chain by means of a kenter connecting link at both ends. The type GUERIGNY are especially equipped for low torque applications.

	calibre de chaine	Diam EXT	Longueur utile	diam œil	Poids	Charge d'epreuve CE
Guerigny swivel	mm	A	length	eye dia	Weight	Proof Load
	mm	A	B	C	Kg	Kn
EGNYC16X	16	63	107	28	2	150
EGNYC19X	19	73	129	34	3,3	210
EGNYC20X	20	81	141	36	5	244
EGNYC22X24	22	90	162	42	6	332
EGNYC27X	27	102	180,5	47	9	419
EGNYC30X32	30	123	215	56	16	583
EGNYC35X	35	140	234	62	20	698
EGNYC38X40	38	157	265	70	30	896
EGNYC43X46	43	161	307	80	48	1170
EGNYC49X51	49	202	340	89	62	1370
EGNYC54X57	54	225	385	100	95	1710
EGNYC60X64	60	247	433	112	110	2190
EGNYC66X	66	264	450	115	135	2310
EGNYC70X	70	280	471	121	149	2580
EGNYC76X	76	294	511	132	210	3010
EGNYC80X	80	314	545	140	245	3350
EGNYCA0X	100	393	678,5	175	400	4940

-7/ SWIVEL WITH BEARING



Manufacturing with alloy steel HR type 42CD4
Application of Protective paint.

Emerillon swivel	diam de chaine Chain diam	Diam corps Body diam	Longueur length	Diam oeil Eye diam	Poids Weight	CE Proof Load	CR Breaking Load
	mm	A	B	C	Kg	KN	KN
EER20	20	114	394	40	20	200	400
EER25	25	152	416	40	23	300	600
EER35	35	165	565	51	60	500	900

CARLIER CHAINES



37 rue Roger SALENGRO - BP10145 - 59733 - St AMAND LES EAUX - FRANCE
DA79.01 ind 02

Tel: 00 33 (0)3 27 48 12 00

Fax: 00 33 (0)3 27 48 95 27

mail : info@carlier-chain.com

30



-7/ G HOOK & CONNECTING LINK WITH FLAT PART

Din 5683



Ref : GHAK



These hooks are used to connect and secure efficiently
 The mooring line to a buoy.
 They may be welded directly into the chain in our factory.
 They are made from high resistance steel in a compact and strong design to resist to corrosion

for chain size dn	Link with flat part			PL	"G" Hook		
	CODE ARTICLE	Size of link dia x pitch x width	Weight kg	Test	CODE ARTICLE	Size of "G" hook thickness x E x F	Weight kg
16 /20 mm	A30270X105	30 x 270 x 105	4,16	120 Kn	GHAKEN34	34 x 172 x 105	2,95
22/35 mm	A39351X136	39 x 351 x 136	11,1	350 Kn	GHAKEN48	48 x 240 x 152	9,2

CARLIER CHAINES



37 rue Roger SALENGRO - BP10145 - 59733 - St AMAND LES EAUX - FRANCE
DA79.01 ind 02

Tel: 00 33 (0)3 27 48 12 00

Fax: 00 33 (0)3 27 48 95 27

mail : info@carlier-chain.com

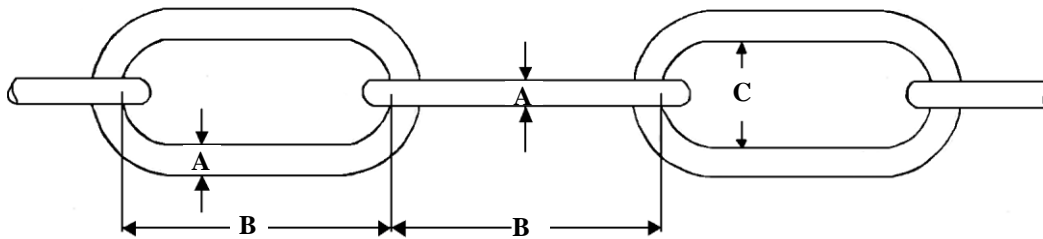


**-8/ EXTRA WIDE CHAIN GERMAN TYPE
FOR MOORING**

**Din 5683
Pitch = 9 x D**



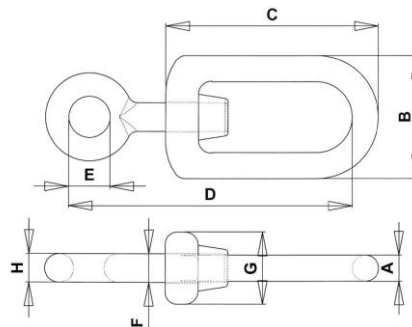
Ref: CM90Dxx



CODE ARTICLE	Nominal Size mm		Pitch B Tol	Width C Tol		PL Kn Proof load	BL Kn Break load	Weight Kg/m		
	A	Tol								
CM90D13	13	4/8	±0,7	36	±4	18	±2	110	210	3,9
CM90D16	16	5/8	±0,8	144	±4	56	±3	32	160	4,4
CM90D18	18	1" 1/16	±0,9	162	±4	63	±3	40	200	5,6
CM90D20	20	1" 3/16	±1	180	±5	70	±3	50	250	6,9
CM90D23	23	1" 5/16	±1,2	207	±5	81	±4	63	320	9,1
CM90D26	26	1"	±1,3	234	±6	91	±4	80	400	12
CM90D30	30	1" 3/16	±1,5	270	±7	105	±5	110	560	15
CM90D33	33	1" 5/16	±1,7	297	±7	116	±5	130	670	19
CM90D36	36	1" 7/16	±1,8	324	±8	126	±6	160	800	22
CM90D39	39	1" 9/16	±2	351	±9	137	±6	190	950	26

-8/ SWIVEL

Din 5683



CODE ARTICLE	DN		Emerillon selon DIN 5683 01/95								Poids / Weight kg
	Diamètre de Chaîne		A	B	C	D	E	F	G	H	
	Chain Size mm	Inches									
EG1	16	5/8									
	18	11/16	25	120	168	224	40	30	60	22	3,3
	20	13/16									
EG2	23	15/16									
	26	1"	37	170	243	321	55	42	88	31	9,7
	30	1" 3/16									
EG3	33	1" 5/16									
	36	1" 7/16	50	220	351	470	80	60	130	47	28,0
	39	1" 9/16									

CARLIER CHAINES



37 rue Roger SALENGRO - BP10145 - 59733 - St AMAND LES EAUX - FRANCE
DA79.01 ind 02

Tel: 00 33 (0)3 27 48 12 00

Fax: 00 33 (0)3 27 48 95 27

mail : info@carlier-chain.com



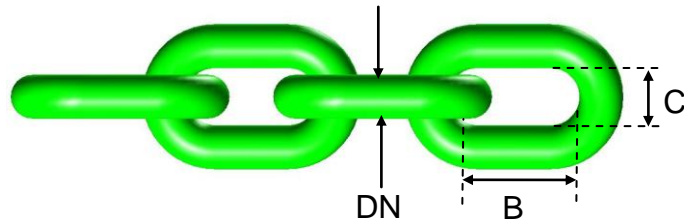
-9/ SHORT LINK CHAIN

pitch = 3xD



Ref. CM30Dxx

Norme NFE 26011



Standard chain for mooring applications
in 3 grades from normal steel (SL1) to alloyed heat steel (SL3)
special or stainless steel available

Chaînes sans étai 3xD / Open link chains 3xD

CODE ARTICLE	DN		B Pitch	C Width	Quality SL1		Quality SL2		Quality SL3		nbr of links/m	Weight per meter (Kg)	free place in end link (+5%)
	Nominal Diameter				CE	CR	CE	CR	CE	CR			
	mm	Inches	(mm)	(mm)	(kN)	(kN)	(kN)	(kN)	(kN)	(kN)			
CM30D12	12	4/9	36	15,6	36	72	45	90	57	113	27,78	3,15	22 x 14,5
CM30D14	14	9/16	42	18	48	96	62	124	77	154	23,81	4,3	25 x 17
CM30D16	16	5/8	48	21	63	126	80	160	101	202	20,83	5,6	30 x 20
CM30D18	18	11/16	54	23	82	160	104	209	131	262	18,52	7,3	34 x 21
CM30D20	20	13/16	60	26	104	208	132	264	165	330	16,67	9,0	38 x 24
CM30D22	22	7/8	66	29	120	240	152	304	190	380	15,15	11,0	42 x 27
CM30D25	25	15/16	75	33	155	310	197	393	246	491	13,33	14,0	48 x 31
CM30D28	28	1" 1/8	84	36	194	388	246	492	308	616	11,90	17,2	54 x 33
CM30D30	30	1" 3/16	90	39	223	446	283	566	353	706	11,11	19,7	58 x 37
CM30D32	32	1" 1/4	96	42	253	506	322	644	402	804	10,42	22,5	62 x 40
CM30D35	35	1" 3/8	105	46	304	607	385	770	482	964	9,52	26,8	68 x 44
CM30D38	38	1" 1/2	114	49	357	714	454	900	565	1130	8,77	31,7	74 x 47
CM30D40	40	1"9/16	120	52	396	792	505	1010	630	1260	8,33	35,0	78 x 50
CM30D45	45	1" 3/4	135	59	502	1004	638	1275	795	1590	7,41	44,4	88 x 57
CM30D50	50	1" 15/16	150	65	620	1240	785	1570	980	1960	6,67	54,8	98 x 63
CM30D55	55	2" 1/8	165	72	750	1510	940	1900	1190	2380	6,06	66,3	108 x 70
CM30D60	60	2" 3/8	180	78	900	1800	1130	2260	1420	2770	5,56	78,9	118 x 76

For other diameters or dimensions please ask

CARLIER CHAINES



37 rue Roger SALENGRO - BP10145 - 59733 - St AMAND LES EAUX - FRANCE
DA79.01 ind 02

Tel: 00 33 (0)3 27 48 12 00

Fax: 00 33 (0)3 27 48 95 27

mail : info@carlier-chain.com

33



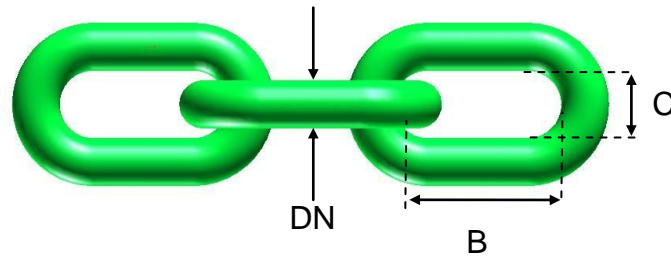
-9/ MID LINK CHAIN

pitch = 3,5xD



Ref. CM35Dxx

Norme NFE 26012



Chain for general purpose in mooring, in 3 standard qualities from ordinary steel SL1 to high resistance quality SL3 also made in special or stainless steel if needed.

Chaînes sans étau 3,5xD / Open link chains 3,5xD

CODE ARTICLE	A Nominal Diameter		B Pitch (mm)	C Width (mm)	=classe 32 Quality SL1		= classe 40 Quality SL2		= classe 50 Quality SL3		links/m	Weight per meter (Kg/m)	Free place in end link (± 5%)		
	mm	Inches			Epr PL (kN)	Rupt BL (kN)	Epr PL (kN)	Rupt BL (kN)	Epr PL (kN)	Rupt BL (kN)					
CM35D12	12	4/09	42	16,8	36	72	45	90	57	113	23,81	3	30	X	16,8
CM35D14	14	9/16	49	20	48	96	62	124	77	154	20,41	4,0	35	X	20
CM35D16	16	5/8	56	22	63	126	80	160	101	202	17,86	5,2	40	X	22
CM35D18	18	11/16	63	25	82	160	104	209	131	262	15,87	6,5	45	X	25
CM35D20	20	13/16	70	28	104	208	132	264	165	330	14,29	8,2	50	X	28
CM35D22	22	7/8	77	31	120	240	152	304	190	380	12,99	10,0	55	X	31
CM35D25	25	15/16	88	35	155	310	197	393	246	491	11,36	12,8	63	X	35
CM35D28	28	1" 1/8	98	39	194	388	246	492	308	616	10,20	16,5	70	X	39
CM35D30	30	1" 3/16	105	42	223	446	283	566	353	706	9,52	19,0	75	X	42
CM35D32	32	1" 1/4	112	45	253	506	322	644	402	804	8,93	21,0	80	X	45
CM35D35	35	1" 3/8	123	49	304	607	385	770	482	964	8,13	25,0	88	X	49
CM35D38	38	1" 1/2	133	53	357	714	454	900	565	1130	7,52	29,5	95	X	53
CM35D40	40	1" 9/16	140	56	396	792	505	1010	630	1260	7,14	32,6	100	X	56
CM35D45	45	1" 3/4	158	63	502	1004	638	1275	795	1590	6,33	41,3	113	X	63
CM35D50	50	1" 15/16	175	70	620	1240	785	1570	980	1960	5,71	51,0	125	X	70
CM35D55	55	2" 1/8	193	77	750	1510	940	1900	1190	2380	5,18	61,7	138	X	77
CM35D60	60	2" 3/8	210	84	900	1800	1130	2260	1420	2770	4,76	73,5	150	X	84

For other diameters or dimensions please ask.

CARLIER CHAINES



37 rue Roger SALENGRO - BP10145 - 59733 - St AMAND LES EAUX - FRANCE
DA79.01 ind 02

Tel: 00 33 (0)3 27 48 12 00

Fax: 00 33 (0)3 27 48 95 27

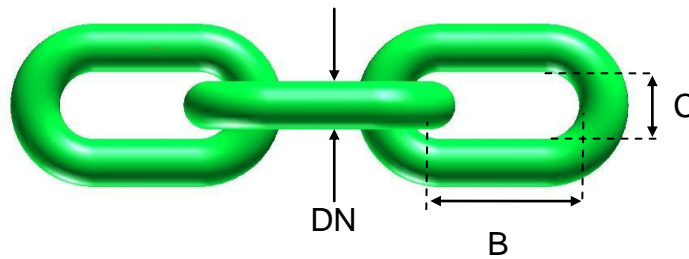
mail : info@carlier-chain.com



-9/ CHAIN 4D

Pitch= 4xD

Ref: CM40Dxx



CHAIN FOR MOORING, in 3 standard qualities from SL1 in ordinary steel to SL3 in high resistant manganese alloyed steel (din 17115),

The inside width allows to fit in shackles, without special end links.

This chain is a very good compromise between price, weight & resistance.

All the links are fully proof load tested, and individually checked following BV & LROS state of art regulations before dispatch.

Chaînes sans étai 4xD / Open link chains 4xD

CODE	DN	Pitch	Width	≈ classe 32		≈ classe 40		≈ classe 50		links/m	Weight per meter	Free place in end link (± 5%)		
				Quality SL1	Quality SL2	Quality SL3								
ARTICLE	mm	(mm)	(mm)	Epr PL (kN)	Rupt BL (kN)	Epr PL (kN)	Rupt BL (kN)	Epr PL (kN)	Rupt BL (kN)	(Kg/m)				
CM40D12	12	48	19	36	72	45	90	57	113	20,83	2,97	35	x	18
CM40D14	14	56	20	48	96	62	124	77	154	17,9	3,8	40	x	20
CM40D16	16	64	22	63	126	80	160	101	202	15,6	5,0	46	x	22
CM40D18	18	72	25	82	160	104	209	131	262	13,9	6,3	52	x	25
CM40D20	20	80	28	104	208	132	264	165	330	12,5	7,8	58	x	28
CM40D22	22	88	31	120	240	152	304	190	380	11,4	9,4	64	x	31
CM40D25	25	100	35	155	310	197	393	246	491	10,0	12,1	73	x	35
CM40D28	28	112	39	194	388	246	492	308	616	8,9	15,2	82	x	39
CM40D30	30	120	42	223	446	283	566	353	706	8,3	17,4	88	x	42
CM40D32	32	128	45	253	506	322	644	402	804	7,8	19,8	94	x	45
CM40D35	35	140	49	304	607	385	770	482	964	7,1	23,8	103	x	49
CM40D38	38	152	53	357	714	454	900	565	1130	6,6	28,0	112	x	53
CM40D40	40	160	56	396	792	505	1010	630	1260	6,3	31,0	118	x	56
CM40D45	45	180	63	502	1004	638	1275	795	1590	5,6	39,3	133	x	63
CM40D50	50	200	70	620	1240	785	1570	980	1960	5,0	48,5	148	x	70
CM40D55	55	220	77	750	1510	940	1900	1190	2380	4,5	58,7	163	x	77
CM40D60	60	240	84	900	1800	1130	2260	1420	2770	4,2	70,0	178	x	84

CODE article	A DN mm	B pitch mm	C width mm	CL40/ SL2			links/m	Weight per meter (kg/m)	free place in end link (± 5%)		
				SWL CMU Kn	PL EPR Kn	BL RUPT Kn					
CM40D65	65	260	91	463	1150	2700	3,8	82	193	x	91
CM40D70	70	280	98	627	1250	3140	3,6	93,8	208	x	98
CM40D75	75	300	105	721	1440	3600	3,3	110	223	x	105
CM40D80	80	320	112	820	1640	4100	3,1	125	238	x	112
CM40885	85	340	119	926	1850	4630	2,9	142	253	x	119
CM40D90	90	360	126	1038	2076	5190	2,8	160	268	x	126
CM40D95	95	380	133	1152	2314	5780	2,6	180	283	x	133
CM40DA0	100	400	140	1282	2564	6400	2,5	200	298	x	140

For other sizes please ask.

CARLIER CHAINES



37 rue Roger SALENGRO - BP10145 - 59733 - St AMAND LES EAUX - FRANCE
 DA79.01 ind 02

Tel: 00 33 (0)3 27 48 12 00

Fax: 00 33 (0)3 27 48 95 27

mail : info@carlier-chain.com

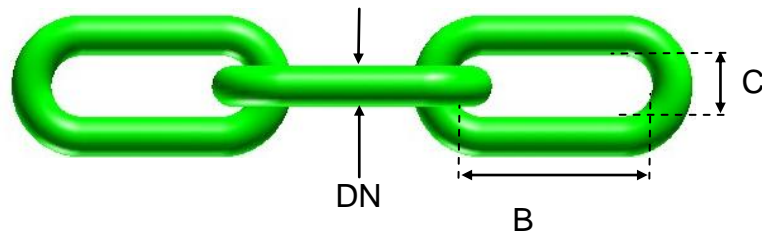


-9/ LONG LINK CHAIN

Pitch= 5xD



Ref: CM50Dxx



CHAIN FOR MOORING ,in 3 standard qualities from SL1 in ordinary steel to SL3 in high resistant manganese alloyed steel (din 17115),

The inside width allows to fit in shackles, without special end links.

This chain is a very good compromise between price, weight & resistance.

All the links are fully proof load tested, and individually checked following BV & LROS state of art regulations before dispatch.

Chaînes à mailles longues sans étais 5xD / Open long link chains 5xD

CODE ARTICLE	A Nominal Diameter		B Pitch (mm)	C Width (mm)	≈ classe 32 Quality SL1		≈ classe 40 Quality SL2		≈ classe 50 Quality SL3		links/ m	Weight per meter (Kg/m)	Free place in end link (± 5%)
	mm	Inches			Epr PL (kN)	Rupt BL (kN)	Epr PL (kN)	Rupt BL (kN)	Epr PL (kN)	Rupt BL (kN)			
CM50D12	12	4/9	56	21	36	72	45	90	57	113	17,86	2,7	46 x 19
CM50D14	14	9/16	70	21	48	96	62	124	77	154	14,3	3,7	54 x 19
CM50D16	16	5/8	80	24	63	126	80	160	101	202	12,5	4,8	62 x 22
CM50D18	18	11/16	90	27	82	160	104	209	131	262	11,1	6,0	70 x 25
CM50D20	20	13/16	100	30	104	208	132	264	165	330	10,0	7,5	78 x 28
CM50D22	22	7/8	110	33	120	240	152	304	190	380	9,1	9,0	86 x 31
CM50D25	25	15/16	125	38	155	310	197	393	246	491	8,0	11,6	98 x 36
CM50D28	28	1" 1/8	140	42	194	388	246	492	308	616	7,1	14,6	110 x 40
CM50D30	30	1" 3/16	150	45	223	446	283	566	353	706	6,7	16,7	118 x 43
CM50D32	32	1" 1/4	160	48	253	506	322	644	402	804	6,3	19,0	126 x 46
CM50D35	35	1" 3/8	175	53	304	607	385	770	482	964	5,7	22,8	138 x 51
CM50D38	38	1 1/2	190	57	357	714	454	900	565	1130	5,3	26,9	150 x 55
CM50D40	40	1" 9/16	200	60	396	792	505	1010	630	1260	5,0	29,8	158 x 58
CM50D45	45	1" 3/4	225	68	502	1004	638	1275	795	1590	4,4	37,7	178 x 66
CM50D50	50	1" 15/16	250	75	620	1240	785	1570	980	1960	4,0	46,5	198 x 73
CM50D55	55	2" 1/8	275	83	750	1510	940	1900	1190	2380	3,6	56,3	218 x 81
CM50D60	60	2" 3/8	300	90	900	1800	1130	2260	1420	2770	3,3	67,0	238 x 88

For other diameters please ask

CARLIER CHAINES



37 rue Roger SALENGRO - BP10145 - 59733 - St AMAND LES EAUX - FRANCE
DA79.01 ind 02

Tel: 00 33 (0)3 27 48 12 00

Fax: 00 33 (0)3 27 48 95 27

mail : info@carlier-chain.com

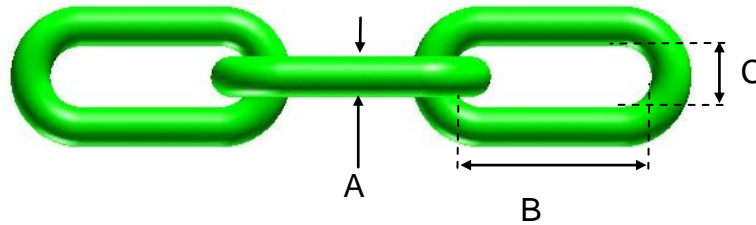


-9/ LONG LINK CHAIN

Pitch= 6.5xD
Din 5685



NFE 26020



Code Article	A Diametre nominal	B pitch en mm	C width en mm	weight kg	Charg, D'util, indicative(kg)
CM65D06_D	6	42	12	59	230
CM65D08_D	8	52	16	108	400
CM65D10_D	10	65	20	170	620
CM65D12_D	12	78	24	250	900

Code Article	A Diametre nominal	B pitch en mm	C width en mm	weight kg	Charg, D'util, indicative(kg)
CM65D06_G	6	42	12	59	230
CM65D08_G	8	52	16	108	400
CM65D10_G	10	65	20	170	620
CM65D12_G	12	78	24	250	900

CARLIER CHAINES



37 rue Roger SALENGRO - BP10145 - 59733 - St AMAND LES EAUX - FRANCE
DA79.01 ind 02

Tel: 00 33 (0)3 27 48 12 00

Fax: 00 33 (0)3 27 48 95 27

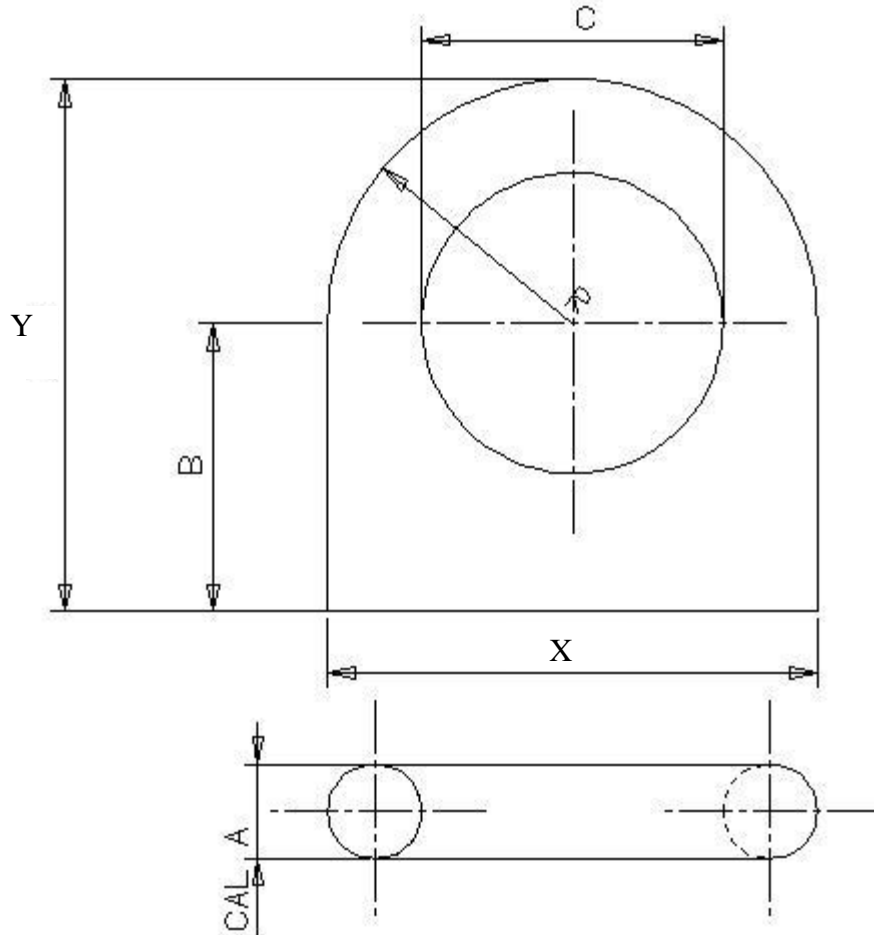
mail : info@carlier-chain.com



• II/ PROPERTIES :



-1/ Eye bolt



Code article	CAL	A mm	B mm	C mm	Y	X	R mm	Masse kg	CMU en daN	C Epr en daN	C Rupt en daN
IPBC10	10	10	31	32	57	52	26	0,14	380	760	1900
IPBC13	13	13	37	40	70	66	33	0,29	660	1320	3300
IPBC15	15	15	46	48	85	78	39	0,47	850	1700	4250
IPBC18	18	18	53	56	99	92	46	0,76	1260	2520	6300
IPBC20	20	20	61	64	113	104	52	1,1	1520	3040	7600
IPBC23	23	23	68	72	127	118	59	1,6	2050	4100	10250
IPBC26	26	26	76	80	142	132	66	2,4	2650	5300	13250
IPBC30	30	30	80	80	150	140	70	3,2	3500	7000	17500
IPBC45	45	45	120	128	229	218	109	10,6	9000	18000	45000
IPBC62	62	62	168	176	328	320	160	30	12500	25000	62500

CMU also depends on the quality of the weld made by the customer

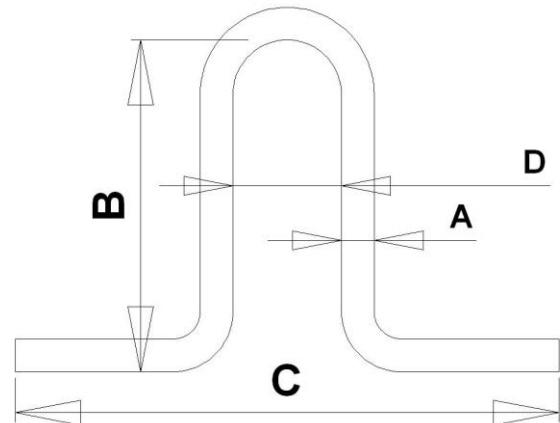


-2/ OMEGA BAR FOR CONCRETE SINKER



Special fittings to make your concrete sinkers.
Made from the same steel as the chain,
Following our standard size or your drawing.

FINISHING : Rough
Bituminous black Varnish
Hot deep galvanised



CODE ARTICLE	A	B	C	D	Poids
	diam mm	Total height mm	length mm	inside width mm	Weight kg
UP40X500X1000	40	500	1000	90	15
UP50X500X1020	50	500	1020	130	25
UP60X500X1020	60	500	1020	200	42

For other size and form: please ask.

CARLIER CHAINES



37 rue Roger SALENGRO - BP10145 - 59733 - St AMAND LES EAUX - FRANCE
DA79.01 ind 02

Tel: 00 33 (0)3 27 48 12 00

Fax: 00 33 (0)3 27 48 95 27

mail : info@carlier-chain.com



-3/ THE HOOK

PELICAN HOOK:

Individually proofload tested to 2.5 X SWL
 Minimum Breakload 5 X SWL
 Any other size or dimension : please ask.



SWL	DIMENSIONS				
	Eye Diam	jaw gap : B x C		Length	Weight
5	32	85	25	200	5
10	38	160	65	358	25
15	45	165	70	390	35
25	55	180	76	430	55
35	60	200	85	475	70
55	75	230	90	525	90

BLAKE STOPPER:

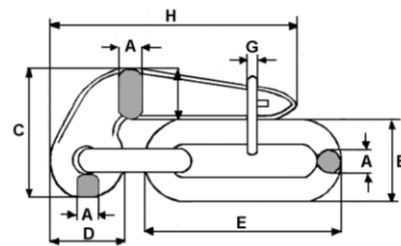
Individually proofload tested to 2.5 X SWL
 Minimum Breakload 5 X SWL
 Any other size or dimension : please ask.



code article	proof load test	for chain DN	jaw gap	total length	WEIGHT
BLAK20/32G	12T	26-32	140 x 36	290	12
BLAK38/44G	20T	38-44	190 x 50	395	21,5

SLIP HOOK:

Individually proofload tested to 2.5 X SWL
 Minimum Breakload 5 X SWL
 Any other size or dimension : please ask.



CODE ARTICLE	Nominal Size		Slip hook							
			A	B	C	D	E	F	G	H
	mm	Inches	mm	mm	mm	mm	mm	mm	mm	mm
GECHAP14	14	9/16	18	62	94	56	146	35	8	182
GECHAP16	16	5/8	21	70	107	64	166	40	10	208
GECHAP20	20,5	13/16	27	90	137	82	213	51	12	267
GECHAP24	24	15/16	31	106	161	96	250	60	14	312
GECHAP30	30	1 3/16	39	132	201	120	312	75	18	390
GECHAP36	36	1 7/16	47	158	241	144	374	90	22	468
GECHAP42	42	1 5/8	55	185	281	168	437	105	25	546
GECHAP48	48	1 7/8	62	211	322	192	499	120	29	624
GECHAP56	56	2 3/16	73	246	375	224	582	140	34	728



CARLIER CHAINES



37 rue Roger SALENGRO - BP10145 - 59733 - St AMAND LES EAUX - FRANCE
 DA79.01 ind 02

Tel: 00 33 (0)3 27 48 12 00

Fax: 00 33 (0)3 27 48 95 27

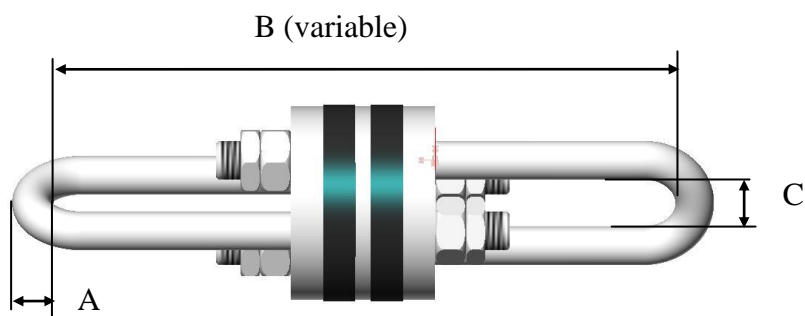
mail : info@carlier-chain.com



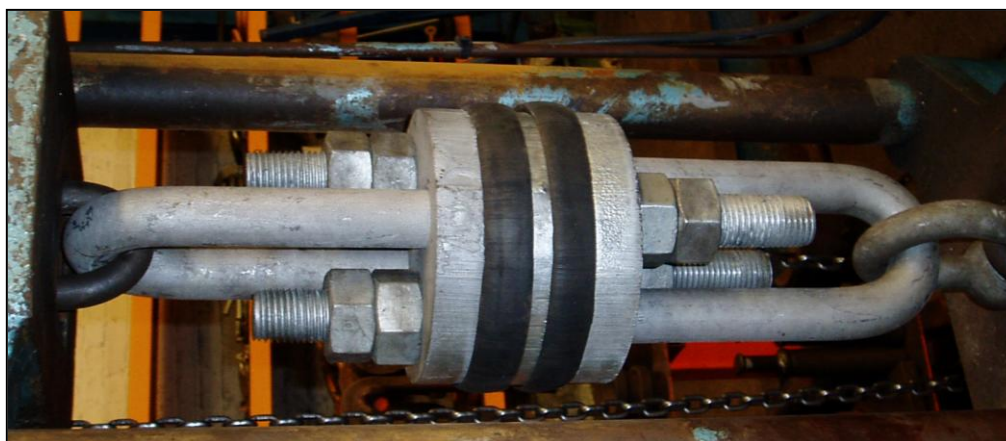
-4/ CHAIN ADJUSTER



Chain adjuster **with rubber**.



CODE ARTICLE	Ø chaîne Chain Ø	CMU SWL	A	B mini	B maxi	C	Poids Weight
	mm	kN	mm	mm	mm	mm	kg
QPC24L405	20	80	24	380	480	40	11,5
QPC30L485	25	130	30	400	570	49	19,7
QPC36L580	30	180	36	480	680	59	32,0
QPC42L660	35	250	42	552	768	70	46,0
QPC45L710	40	320	45	580	835	80	56,0
QPC52L821	45	410	52	680	970	83	85,0
QPC56L890	50	500	56	730	1050	100	107,0
QPC70L1140	60	730	70	980	1300	112	190,0



CARLIER CHAINES



37 rue Roger SALENGRO - BP10145 - 59733 - St AMAND LES EAUX - FRANCE
DA79.01 ind 02

Tel: 00 33 (0)3 27 48 12 00

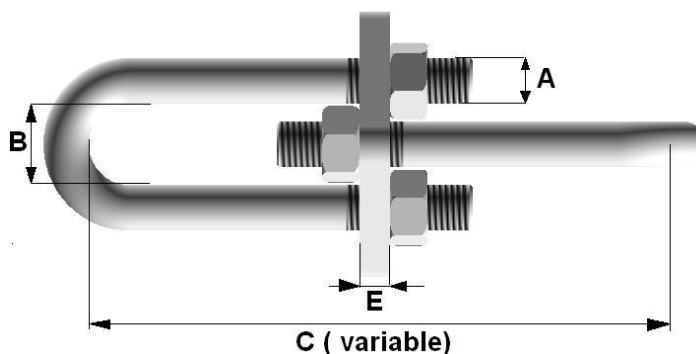
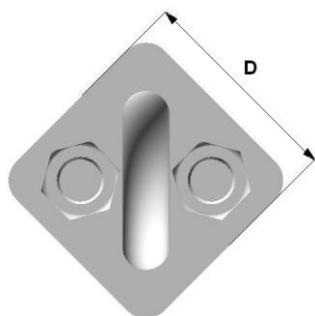
Fax: 00 33 (0)3 27 48 95 27

mail : info@carlier-chain.com

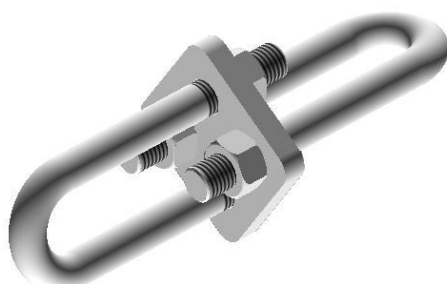


Chain ajuster **without rubber.**

Simple tensioner :



CODE ARTICLE	Ø chaîne Chain Ø mm	A	B	C	D	E	WEIGHT kg
QPK18L227	16	18	32	227 ± 50	80	12	2,3
QPK20L237	18	20	36	237 ± 50	90	14	3,15
QPK24L246	20	24	39	246 ± 50	100	15	4,16
QPK30L270	25	30	49	270 ± 50	125	20	7,6
QPK36L324	30	36	59	324 ± 60	150	25	13
QPK42L389	36	42	70	389 ± 50	180	30	22,7
QPK45L432	40	45	80	432 ± 50	200	30	31
QPK52L486	45	52	83	486 ± 50	225	35	44,2
QPK56L540	50	56	99	540 ± 50	250	40	61
QPK70L650	60	70	110	650 ± 60	300	50	105
QPK76L760	70	76	124	756 ± 59	350	60	167



CARLIER CHAINES



37 rue Roger SALENGRO - BP10145 - 59733 - St AMAND LES EAUX - FRANCE
DA79.01 ind 02

Tel: 00 33 (0)3 27 48 12 00

Fax: 00 33 (0)3 27 48 95 27

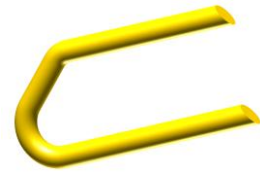
mail : info@carlier-chain.com



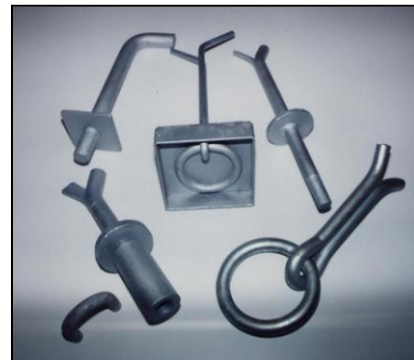
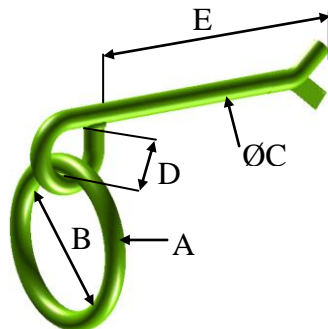
-5/ EVERY TYPE OF STEEL ATTACHMENTS & CONNECTIONS



(from drawing)



EYEBOLT WITH ROUND LINK:



CODE ARTICLE	Anneau rond Round ring A mm	Piton Piton				CMU KN	Poids total Total weight kg
		B mm	Ø C mm	D mm	E mm		
UO14X---QG	14	70	14	24	132	5	0.54
UO16X---QG	16	80	16	30	154	8	0.83
UO18X---QG	18	90	18	30	200	10	1.38
UO20X---QG	20	100	20	30	198	15	1.82
UO22X---QG	22	110	22	30	220	20	2.17
UO25X---QG	25	125	25	50	242	30	3.22
UO28X---QG	28	140	28	50	275	40	4.40
UO30X---QG	30	150	30	50	330	50	6.54
UO30X---QG	32	160	32	60	352	60	7.70
UO35X---QG	35	175	35	60	385	70	9.91
UO40X---QG	40	200	40	80	440	100	15.51
UO50X---QG	50	250	50	80	550	200	29.32

CARLIER CHAINES



37 rue Roger SALENGRO - BP10145 - 59733 - St AMAND LES EAUX - FRANCE
DA79.01 ind 02

Tel: 00 33 (0)3 27 48 12 00

Fax: 00 33 (0)3 27 48 95 27

mail : info@carlier-chain.com



**DIFFERENT TYPE OF EYEBOLT
WITH ROUND LINK**



DIFFERENT TYPE OF ANCHORING

Queue de carpe

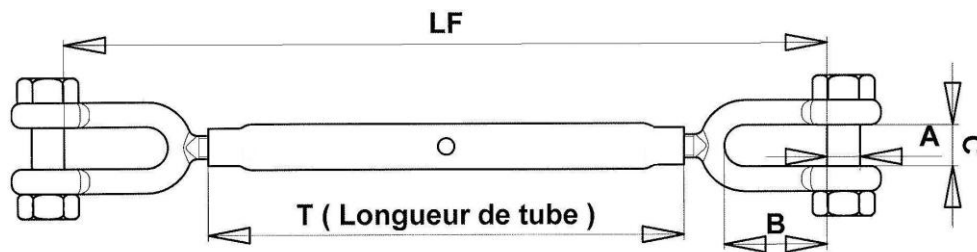
Fileté



-5/ Turnbuckles

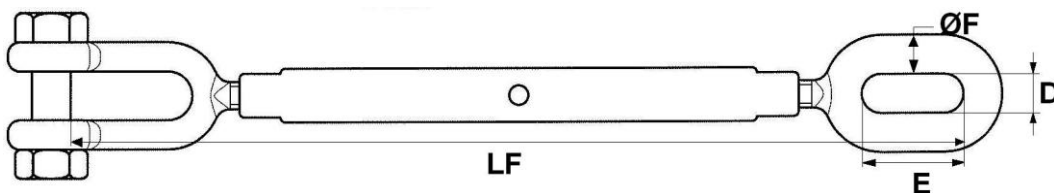


Turnbuckles à 2 chapes :



CODE ARTICLE	CMU	CR	DIAM TIGE	DIAM BOULON A	B	C	D	E	F	T	COURSE	LONGUEUR FERMEE	POIDS kg
QRC08L181G	0T250	1T250	8	6	22	10	8	20	5	103	80	181	0,205
QRC10L228G	0T400	2T000	10	8	26	12	10	25	7	144	104	228	0,320
QRC12L280G	0T500	2T500	12	10	32	14	12	30	9	179	137	280	0,585
QRC14L349G	0T800	4T000	14	12	34	16	14	35	10	219	175	349	1,033
QRC16L390G	1T000	5T000	16	14	38	20	16	40	11	255	200	390	1,400
QRC18L440G	1T500	7T000	18	16	46	21	18	45	13	276	216	440	2,030
QRC20L476G	1T800	9T000	20	16	52	25	20	50	14	295	236	476	2,420
QRC22L505G	2T000	10T000	22	18	51	27	22	55	16	320	250	505	3,200
QRC24L522G	2T600	13T000	24	20	57	30	24	60	18	337	260	522	4,150
QRC27L569G	3T200	16T000	27	22	61	30	27	65	20	352	275	569	5,300
QRC30L620G	4T000	20T000	30	24	76	35	30	75	21	365	282	620	6,800
QRC35L712G	4T500	22T000	35	27	80	38	35	82	25	390	280	712	10,050
QRC40L812G	6T800	34T000	40	36	98	46	40	97	30	435	310	812	14,800

Turnbuckles à chape et à œil oval:



CARLIER CHAINES



37 rue Roger SALENGRO - BP10145 - 59733 - St AMAND LES EAUX - FRANCE
DA79.01 ind 02

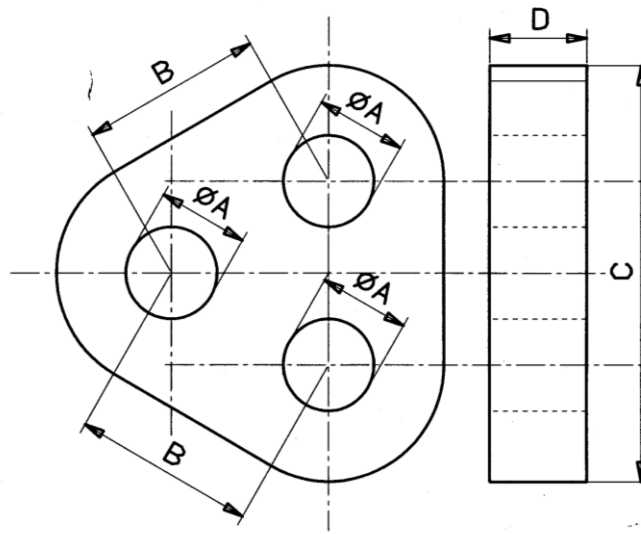
Tel: 00 33 (0)3 27 48 12 00

Fax: 00 33 (0)3 27 48 95 27

mail : info@carlier-chain.com

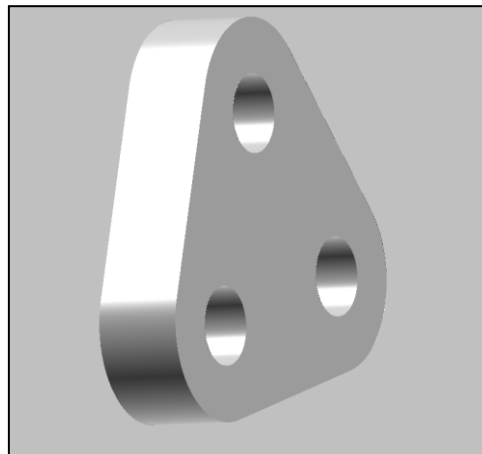


-7/: THE TRIANGULAR PLATE:



CODE ARTICLE	CMU SWL kN	A mm	B mm	C mm	D mm	CR BL kN	Poids Weight Kg
QPA30X110	144	24	50	110	30	576	1,6
QPA45X255	310	54	135	255	45	1 250	12,9
QPA60X280	430	60	150	280	60	1 750	20,6
QPA70X340	620	75	180	340	70	2 500	35,9
QPA85X400	930	87	210	400	85	3 750	59,5
QPAA0X460	1 250	100	240	460	100	5 000	93
QPAA2X500	1 600	115	260	500	120	3 500	125
QPAD0X560	1 850	130	290	560	130	7 500	174
QPAF0X620	2 500	140	320	620	150	10 000	248

For any size , please ask.

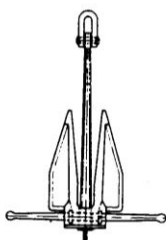


• III/ THE ANCHOR :

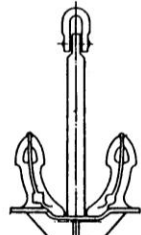


-1/ ANCHOR TYPES:

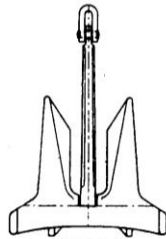
Conventional anchors.



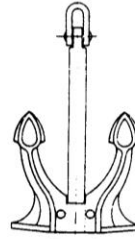
Danforth



Hall



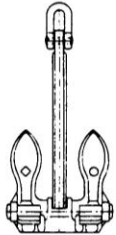
AC14



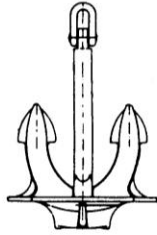
Spek



Admiral



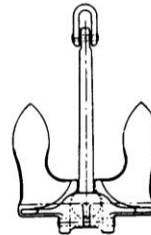
Byers



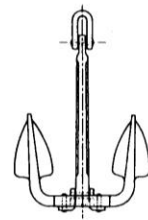
Union



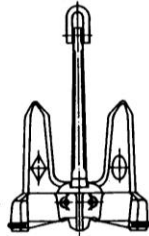
Pool



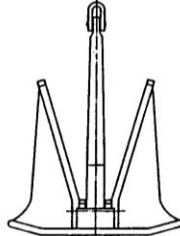
Baldt



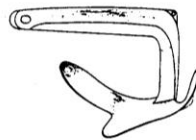
KLIP



ZY-6



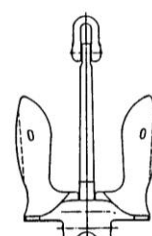
D'Hone



Bruce

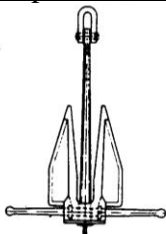


FOB

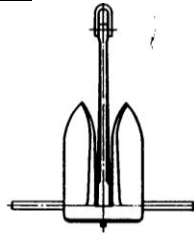


U.S. Navy

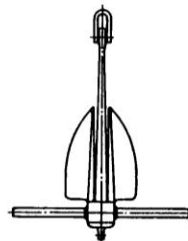
Offshore operation anchors



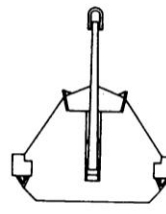
Danforth



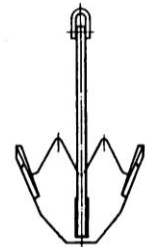
Moorfast



L.W.T.



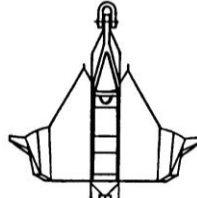
Hook



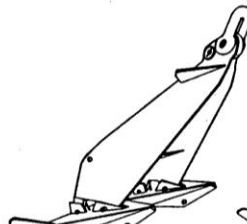
SC12



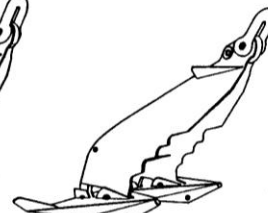
Bruce TS



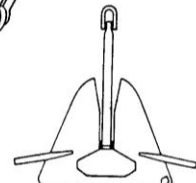
Bruce FF



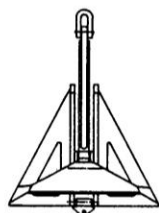
Stevpris



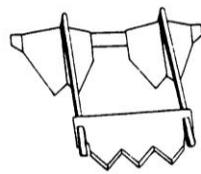
Stevshark



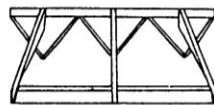
Stavin



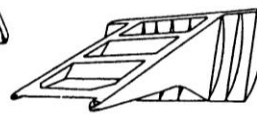
Flipper Delta



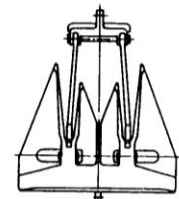
Anteos



Delta Triple



Doris Mud



Norshore II

CARLIER CHAINES



37 rue Roger SALENGRO - BP10145 - 59733 - St AMAND LES EAUX - FRANCE
DA79.01 ind 02

Tel: 00 33 (0)3 27 48 12 00

Fax: 00 33 (0)3 27 48 95 27

mail : info@carlier-chain.com



-2/ DIFFERENT ANCHOR TYPES

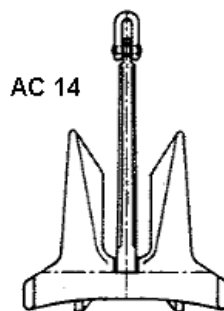


Classe A: Anchors with ultra- penetration in wich the holding capacity extends to the third power of penetration.

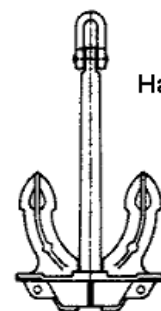
Load: up to 45 times the anchor's weight.

For sand or soft soil use.

(Delta, Stevshark, Kite,...)



AC 14



Hall

Classe B: Anchors with “elbowed” shank, allowing deep penetration .

Load up to 50 times the anchor's weight.

For sand or soft soil use.

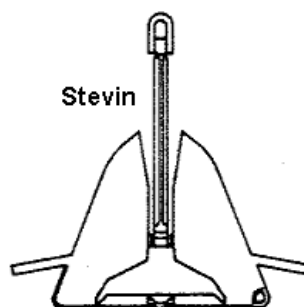
(bruce, hook, AC 12, ...)

Classe C: Anchors with open crown hinge near the center of gravity and relatively short shank and stabilizers.

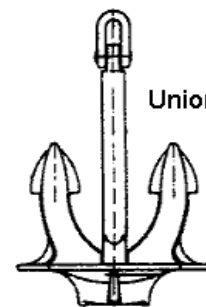
Load up to 45 times the anchor's weight.

For any bottom use, best with sand or soft soil.

(Flipper-Delta, Stevin, ...)



Stevin

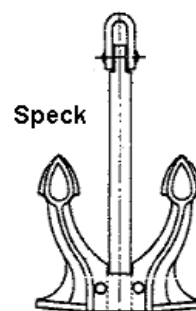


Union

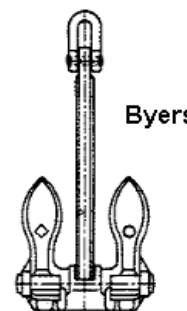
Classe D: Anchors with hinge and stabilizers at the center of gravity and relatively short shank and stabilizers. Load: 10 to 12 times the anchor's weight

For any button use .

(Danforth, Moorfst,...)



Speck

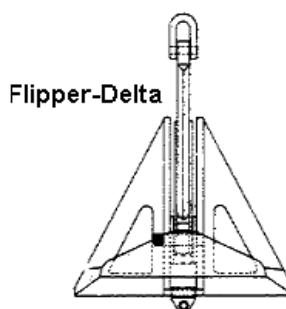


Byers

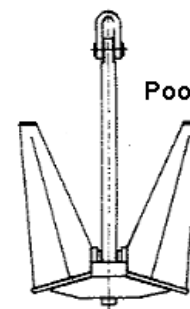
Classe E: Anchors with extremely short, thick stabilizers; hinge at the rear and a relatively short square-shaped shank. Load 9 to 17 times the anchor's weight.

For any bottom use .

(AC 14, Stoes, ...)



Flipper-Delta



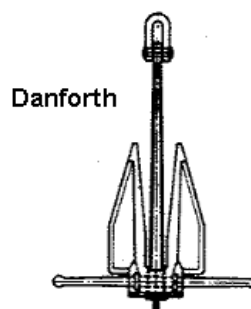
Pool

Classe F: Anchors with square shank, no stock stabilizers, but the stabilizing resistance is built in the fuke design.

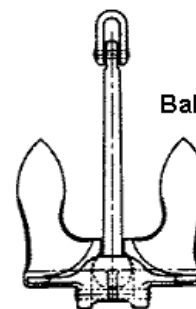
Load 7 to 15 times the anchor's weight.

For rocky bottom use.

(Union, Speck, Pool, ...)



Danforth



Baldt

Classe G: Stock anchors with small fluke area and stabilizers at the front of the chank.

For Rocky bottom use.

(Stock, Dredger, ...)

Classe H: Anchors with special shape for specific application

CARLIER CHAINES



37 rue Roger SALENGRO - BP10145 - 59733 - St AMAND LES EAUX - FRANCE
DA79.01 ind 02

Tel: 00 33 (0)3 27 48 12 00

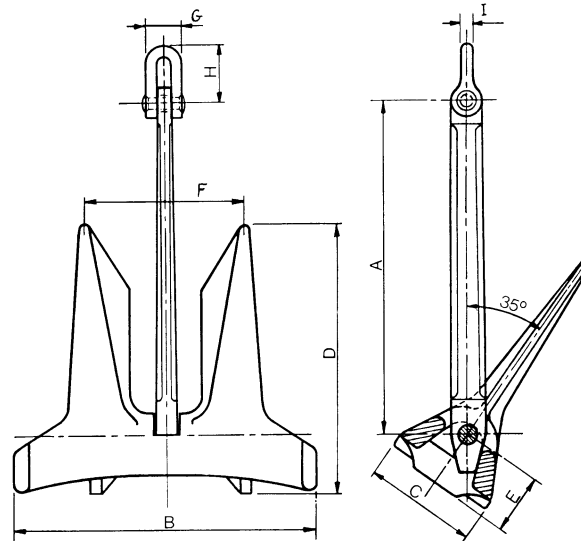
Fax: 00 33 (0)3 27 48 95 27

mail : info@carlier-chain.com



-3/ AC14 HHP ANCHOR

High holding power
Weight reduction alloyed
Cast steel



CODE ARTICLE	POIDS WEIGHT kg	A mm	B mm	C mm	D mm	E mm	F mm	G mm	H mm	I mm
DAC140105	105	770	700	210	610	150	380	103	171	30
DAC140200	200	995	875	280	775	160	465	115	190	30
DAC140250	250	1030	940	305	835	175	500	120	190	30
DAC140315	315	1110	1015	330	905	190	525	130	215	32
DAC140400	400	1200	1100	360	975	205	565	140	235	35
DAC140500	500	1295	1185	385	1050	220	610	150	260	40
DAC140630	630	1400	1280	415	1135	240	660	165	260	40
DAC140710	710	1455	1330	430	1185	250	685	170	280	42
DAC140800	800	1515	1385	450	1230	260	715	175	300	45
DAC140900	900	1575	1440	470	1280	270	740	185	300	45
DAC141000	1 000	1630	1490	485	1325	280	770	190	315	48
DAC141120	1 120	1690	1550	505	1375	290	800	200	315	48
DAC141250	1 250	1760	1605	520	1430	300	825	205	340	50
DAC141400	1 400	1825	1670	545	1485	310	860	215	350	52
DAC141600	1 600	1910	1745	570	1550	325	900	220	370	55
DAC141800	1 800	1985	1815	590	1615	340	935	230	390	60
DAC142000	2 000	2055	1880	610	1670	350	970	240	390	60
DAC142240	2 240	2135	1955	635	1735	365	1 000	248	420	65
DAC142500	2 500	2215	2025	660	1800	375	1 040	257	420	65
DAC142800	2 800	2300	2100	685	1870	390	1 080	267	445	68
DAC143150	3 150	2390	2190	710	1945	405	1 125	277	445	68
DAC143550	3 550	2490	2280	740	2025	420	1 170	289	480	70
DAC144000	4 000	2590	2370	770	2105	440	1 220	300	500	75
DAC144500	4 500	2690	2465	800	2190	460	1 270	312	520	78
DAC145000	5 000	2790	2550	830	2270	475	1 315	324	540	80
DAC145600	5 600	2900	2650	860	2355	495	1 365	336	560	85
DAC146300	6 300	3010	2775	900	2450	515	1 420	349	585	87
DAC147100	7 100	3135	2870	935	2550	535	1 480	364	605	90
DAC148000	8 000	3260	2985	970	2650	555	1 540	378	630	95
DAC149000	9 000	3390	3100	1010	2760	575	1 600	394	655	100
DAC14A000	10 000	3530	3230	1050	2870	600	1 665	410	685	102
DAC14C000	12 000	3750	3435	1120	3050	640	1 765	435	725	110

CARLIER CHAINES



37 rue Roger SALENGRO - BP10145 - 59733 - St AMAND LES EAUX - FRANCE
DA79.01 ind 02

Tel: 00 33 (0)3 27 48 12 00

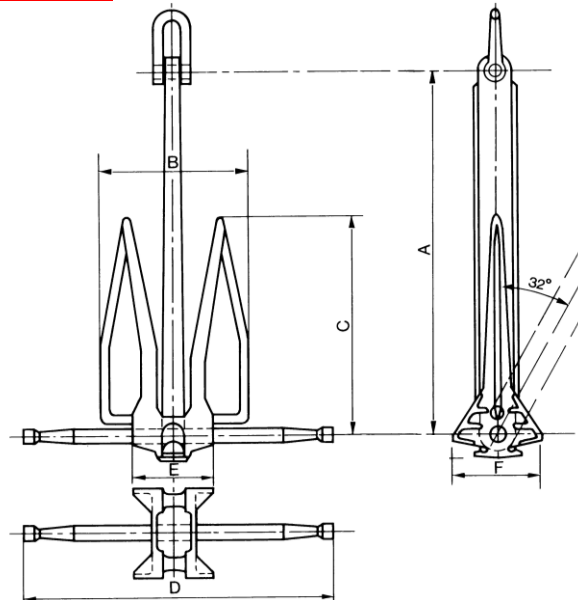
Fax: 00 33 (0)3 27 48 95 27

mail : info@carlier-chain.com



-4/ DANFORTH HHP ANCHOR

High holding power
Weight reduction alloyed
Welded or cast steel



CODE ARTICLE	POIDS WEIGHT kg	A Hauteur mm	B mm	C Hauteur mm	D Largeur mm	E mm	F Epaisseur mm
DANFO0225	225	1600	665	975	1340	310	325
DANFO0340	340	1720	720	1000	1480	368	370
DANFO0455	455	1830	760	1100	1580	395	410
DANFO0680	680	1955	815	1180	1690	425	475
DANFO0910	910	2100	900	1275	1820	490	525
DANFO1135	1 135	2260	930	1350	2140	510	560
DANFO1360	1 360	2390	990	1440	2260	540	595
DANFO1820	1 820	2640	1050	1590	2550	585	660
DANFO2270	2 270	2780	1170	1650	2700	600	710
DANFO2730	2 730	2960	1200	1780	2810	640	750
DANFO3180	3 180	3120	1260	1880	2960	675	790
DANFO3635	3 635	3260	1320	1960	3090	700	825
DANFO4080	4 080	3380	1370	2040	3210	730	860
DANFO4540	4 540	3510	1420	2100	3330	755	890
DANFO5445	5 445	3730	1510	2240	3540	805	945
DANFO6350	6 350	3920	1590	2360	3720	845	995
DANFO7260	7 260	4100	1660	2470	4000	885	1 040
DANFO8165	8 165	4270	1730	2560	4080	920	1 080
DANFO9075	9 075	4370	1770	2620	4150	945	1 110
DANFOB345	11 345	4710	1910	2820	4470	1020	1 195
DANFOD610	13 610	5000	2025	3000	4750	1080	1 270

CARLIER CHAINES



37 rue Roger SALENGRO - BP10145 - 59733 - St AMAND LES EAUX - FRANCE
DA79.01 ind 02

Tel: 00 33 (0)3 27 48 12 00

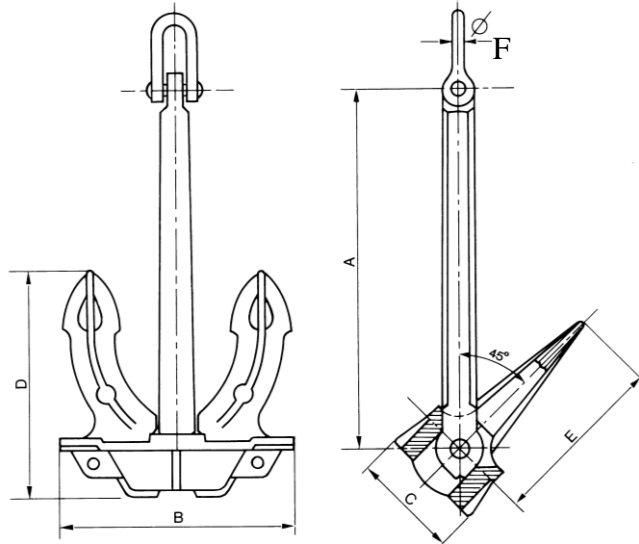
Fax: 00 33 (0)3 27 48 95 27

mail : info@carlier-chain.com



-5/ HALL ANCHOR

Ordinary anchor
No weight reduction
Cast steel



CODE ARTICLE	POIDS WEIGHT kg	A mm	B mm	C mm	D mm	E mm	F mm
DHALL0050	50	575	410	184	378	300	15
DHALL0075	75	660	480	210	429	340	15
DHALL0100	100	723	510	230	474	375	20
DHALL0150	150	835	580	264	544	430	20
DHALL0200	200	915	645	290	594	470	25
DHALL0240	240	985	694	312	644	510	25
DHALL0300	300	1050	738	330	685	543	30
DHALL0360	360	1100	778	346	719	570	30
DHALL0400	400	1150	810	360	752	595	30
DHALL0450	450	1200	845	373	784	620	35
DHALL0500	500	1240	875	386	810	640	35
DHALL0570	570	1280	904	400	837	660	40
DHALL0600	600	1320	930	410	860	680	40
DHALL0700	700	1390	980	430	907	715	45
DHALL0900	900	1490	1053	480	970	772	50
DHALL1020	1 020	1545	1090	496	1005	800	55
DHALL1200	1 200	1650	1165	530	1076	855	55
DHALL1350	1 350	1700	1205	550	1120	890	60
DHALL1440	1 440	1800	1245	555	1147	895	65
DHALL1590	1 590	1890	1260	565	1181	900	65
DHALL1740	1 740	1910	1290	582	1238	945	65
DHALL1920	1 920	1930	1362	616	1262	999	70
DHALL2100	2 100	2020	1407	623	1296	1 020	70
DHALL2460	2 460	2120	1483	667	1367	1 076	75
DHALL3060	3 060	2261	1596	720	1480	1 172	80
DHALL3540	3 540	2335	1650	674	1528	1 210	80
DHALL4050	4 050	2466	1740	712	1613	1 278	90
DHALL4890	4 890	2923	2011	804	1746	1 413	100
DHALL6000	6 000	3270	2033	829	1878	1 525	110
DHALL6900	6 900	2930	2064	932	1904	1 512	110
DHALL7350	7 350	3072	2150	950	1982	1 536	120
DHALL7800	7 800	3113	2179	965	2008	1 556	120

CARLIER CHAINES



37 rue Roger SALENGRO - BP10145 - 59733 - St AMAND LES EAUX - FRANCE
DA79.01 ind 02

Tel: 00 33 (0)3 27 48 12 00

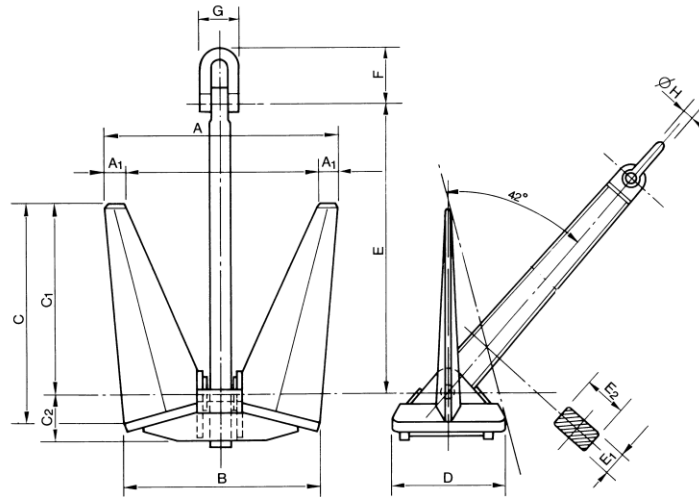
Fax: 00 33 (0)3 27 48 95 27

mail : info@carlier-chain.com



-6/ POOL HHP ANCHOR

High holding power
Weight reduction alloyed
Welded or cast steel



CODE ARTICLE	POIDS WEIGHT kg	A Largeur mm	B mm	C Hauteur mm	D épaisseur mm	E Hauteur mm	F mm	G mm	H mm
DPOOL0004	4	224	190	198	106	265	41	23	6
DPOOL0008	8	282	239	250	133	334	62	37	10
DPOOL0012	12	323	274	286	153	382	80	50	13
DPOOL0016	16	355	302	315	168	421	80	50	13
DPOOL0020	20	383	325	339	181	453	90	60	17
DPOOL0025	25	407	346	361	193	482	90	60	17
DPOOL0050	50	512	435	454	243	607	120	90	22
DPOOL0075	75	595	505	526	282	704	120	90	22
DPOOL0100	100	665	565	588	315	788	142	105	26
DPOOL0180	180	796	676	706	377	942	157	115	29
DPOOL0270	270	911	774	807	432	1 079	186	135	35
DPOOL0360	360	1002	852	888	475	1 188	201	150	38
DPOOL0430	430	1062	902	940	503	1 258	236	175	45
DPOOL0500	500	1115	948	988	528	1 320	236	175	45
DPOOL0585	585	1180	1002	1045	558	1 396	284	185	47
DPOOL0675	675	1236	1050	1096	586	1 465	284	185	47
DPOOL0765	765	1290	1096	1144	610	1 527	284	185	47
DPOOL0855	855	1338	1138	1185	634	1 585	306	225	60
DPOOL0970	970	1390	1185	1236	660	1 652	306	225	60
DPOOL1080	1 080	1446	1230	1282	685	1 714	306	225	60
DPOOL1200	1 200	1495	1270	1323	708	1 771	306	225	60
DPOOL1305	1 305	1541	1309	1364	730	1 825	306	225	60
DPOOL1440	1 440	1592	1352	1412	754	1 886	306	225	60
DPOOL2000	2 000	1770	1504	1570	838	2 098	361	255	70
DPOOL2500	2 500	1910	1620	1690	904	2 260	400	290	80
DPOOL3000	3 000	2042	1735	1810	968	2 418	400	290	80
DPOOL4000	4 000	2226	1892	1970	1055	2 637	450	325	90
DPOOL5175	5 175	2439	2072	2162	1115	2 889	500	360	100
DPOOL6225	6 225	2594	2204	2299	1229	3 072	550	400	110
DPOOL8000	8 000	2805	2384	2487	1329	3 323	600	435	120
DPOOLA000	10 000	3050	2592	2704	1445	3 613	700	500	140

CARLIER CHAINES



37 rue Roger SALENGRO - BP10145 - 59733 - St AMAND LES EAUX - FRANCE
DA79.01 ind 02

Tel: 00 33 (0)3 27 48 12 00

Fax: 00 33 (0)3 27 48 95 27

mail : info@carlier-chain.com

52





CERTIFICATE OF APPROVAL

This is to certify that the Quality Management System of:

CARLIER CHAINES
37-41 rue Roger Salengro
59733 SAINT AMAND, France

has been approved by Lloyd's Register Quality Assurance
to the following Quality Management System Standards:

ISO 9001:2008

The Quality Management System is applicable to:

**Manufacturing of chains, forged and welded fittings
for lifting, marine and industry.**

Approval
Certificate No: FQA 0353224

Original Approval: 04 May 2001

Current Certificate: 01 June 2013

Certificate Expiry: 31 May 2016

Issued by: Lloyd's Register Quality Assurance France SAS
For and on behalf of LRQA Limited



This document is subject to the provision on the reverse
1, boulevard Vivier Merle, 69443 Lyon cedex 03 France

For and on behalf of 71 Fenchurch Street, London EC3M 4BS United Kingdom

This approval is carried out in accordance with the LRQA assessment and certification procedures and monitored by LRQA.
The use of the UKAS Accreditation Mark indicates Accreditation in respect of those activities covered by the Accreditation Certificate Number 001
March Revision 12

