

baars



QUALITY PONTOONS AND BARGES

Container Pontoons | Split Hopper Barges | Jack-ups
Drywell / Hopper Barges | Mono Pontoons





Address

Rivierdijk 276
3361 AV Sliedrecht
The Netherlands

Mailing address

Postbus 70
3360 AB Sliedrecht
The Netherlands

Contact information

T +31(0)184 - 415566

F +31(0)184 - 411227

E rental@baarsbv.com

E finance@baarsbv.com

E service@baarsbv.com

I www.baarsbv.com

Check our website **www.baarsbv.com**
for the latest equipment information.

© Baars BV. All rights reserved

Contents



3

Contact Information



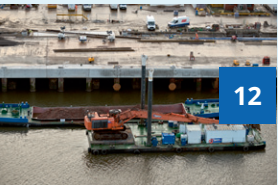
6

Business Information



10

Fleet



12

Modular pontoons



60

Mono Pontoon



62

Split Hopper Barges



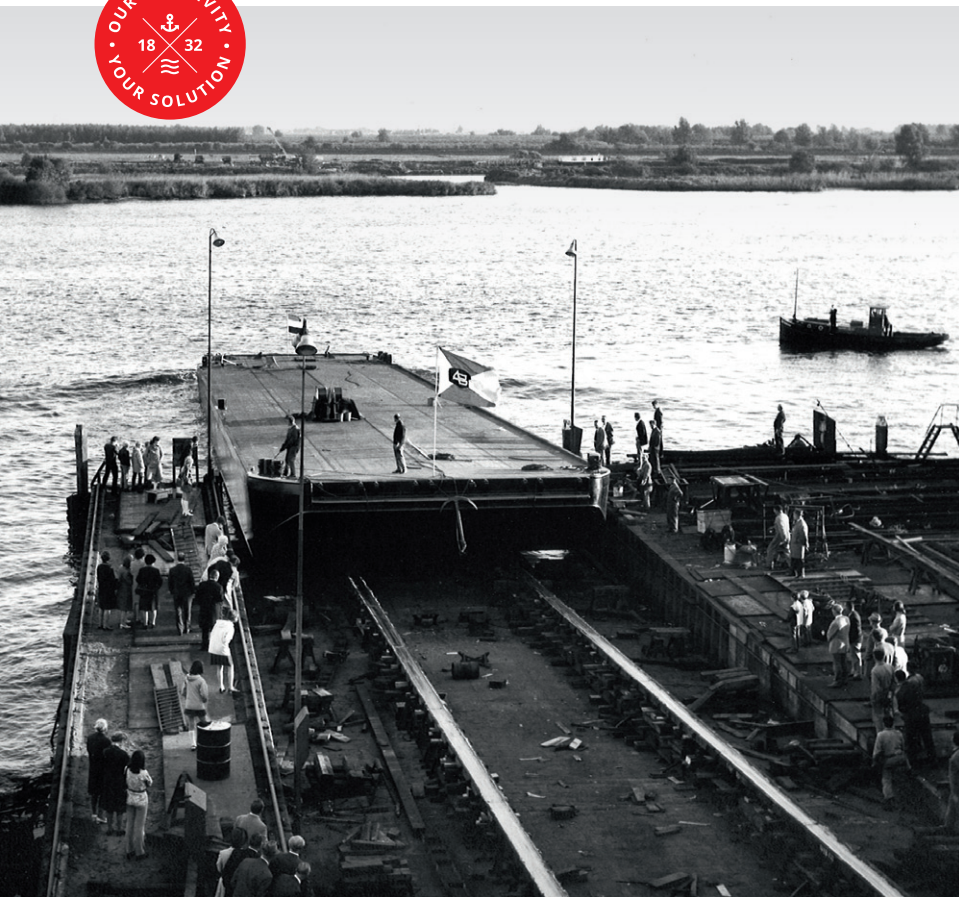
78

Drywell / Hopper Barges



96

Marine Equipment



Business Information

Founded in 1832

In the year 1832, on the 20th of September, Kornelis Baars, coming from Heinenoord, married Kornelia Visser. Kornelia Visser was attached to her birthplace Sliedrecht and so they settled in Sliedrecht. So after his marriage he settled as a shipbuilder in Sliedrecht. He began making wooden barges and boats on a rented property. Business was successful; people had confidence in the shipbuilding qualities of Kornelis Baars. The founder was assisted by his two sons, Arie and Kornelis, who continued the business after his death.

Started at current address in 1888

After having worked with his father and brothers for several years, Arie Baars decided to start his own shipyard in 1888. He had a difficult start, however. The economic crisis struck and orders dried up. For this reason, the young shipbuilder decided to build equipment at his own expense. He primarily built elevator barges, pontoon barges and pontoons, and rented or sold them. This formed the basis for 'A. Baars Azn Exploitatie



Business Information

van Baggermaterieel', better known under the trade name Baars Charter.

Choice of specialism

After many successful years, the managing director at the time, Leen Baars, decided to leave shipbuilding in 1996. The company's focus from then on would be on the rental and sale of dredging equipment. Further development would also take place of the coupling system for modelling pontoons developed by Leen Baars. This exceptional system was marketed under the name Baars Confloat BV and in the meantime has proved its reliability and flexibility worldwide.

New Managing Director

In 2011, Leen Baars transferred his duties to Bert Advocaat, the current managing director of Baars. Bert previously worked at Van Oord as project manager. He has an unparalleled knowledge of the people and the market, and a good name in the sector. Richard Pijl is the deputy managing director since 1995. The technical department is led since 2011 by Maurice van Koert.

Fleet

Modular pontoons, Depth 1.83 m (6')

6' Baars Confloat Coupling	
6' Deck Load	
6' Hydraulic Spud 20'	
6' Wire Spud 20'	
6' Standard 20'	
6' Standard 40'	
6' Bow 40'	
6' Jack-up, pay load 50 tonnes, spud legs 24 m	
6' Multi Pontoon	
6' Dredging Pontoon slurry blade 100 tonnes excavator	
6' Drilling Pontoon 120 tonnes crawler crane	
6' Dredging Pontoon 70 tonnes excavator	
6' Walking spud leg Pontoon 100 tonnes excavator	
6' Ramp Pontoon 70 tonnes dump truck	
6' Drilling Pontoon 200 tonnes crawler crane	

Modular pontoons, Depth 2.90 m (9,5')

9,5' Baars Confloat Coupling	
9,5' Hydraulic Spud 20'	
9,5' Wire Spud 20'	
9,5' Standard 20'	
9,5' Standard 40'	
9,5' Jack-up 400 tonnes payload, spud legs 48 m, Seagoing	
9,5' Walking spud leg Pontoon 100 tonnes excavator, Seagoing	

Mono Pontoon

Mono Pontoon	30.05 m x 11.20 m x 2.50 m
--------------	----------------------------

Split Hopper Barges

	Dimensions (l x b x d)
Dismountable	
Split Hopper Barge 160 m ³	31.34 m x 7.04 m x 2.24 m
Split Hopper Barge 335 m ³	43.84 m x 8.00 m x 2.82 m
Split Hopper Barge 450 m ³	49.28 m x 9.05 m x 3.50 m
Split Hopper Barge 600 m ³	54.02 m x 9.29 m x 3.60 m
Split Hopper Barge 850 m ³	61.80 m x 10.44 m x 3.85 m

Drywell / Hopper Barges

	Dimensions (l x b x d)
Drywell Hopper Barge 240 m ³	43.12 m x 6.98 m x 2.42 m
Drywell Hopper Barge 250 m ³	40.70 m x 6.64 m x 2.47 m
Drywell Hopper Barge 300 m ³	45.61 m x 7.73 m x 2.52 m
Drywell Hopper Barge 425 m ³	50.15 m x 8.22 m x 2.97 m
Drywell Hopper Barge 475 m ³	55.92 m x 8.19 m x 3.22 m
Hopper Barge 489 m ³	35.54 m x 9.05 m x 2.64 m
Hopper Barge 697 m ³	54.92 m x 9.02 m x 2.62 m
Hopper Barge 881 m ³	64.25 m x 9.02 m x 2.62 m

Marine equipment

Powerpack
7 Tonnes Single Drum Winch
10 Tonnes Single Drum Winch
18 Tonnes Single Drum Winch
7 Tonnes Double Drum Winch
Single and Double Bollard Chest
Roller Fairlead
Swivelhead Fairlead

CONTAINER PONTONS 6'



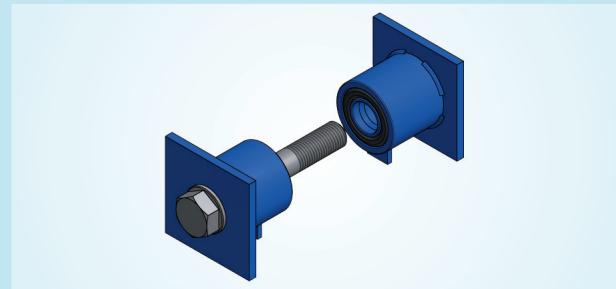
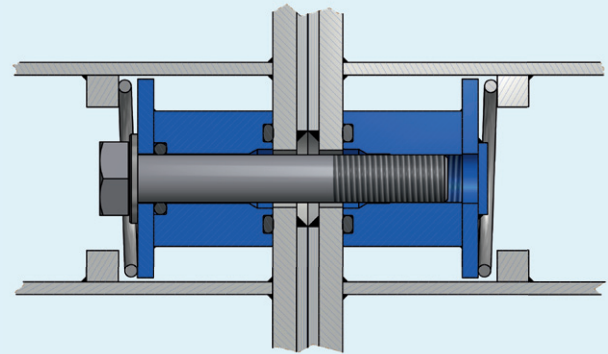
Coupling 6' Container M30

Main Specifications

Pre-tensioning	350 kN, (10kN = 1 ton)
Tensile stress	400 kN, tested by GL
	280 kN, maximum admissible
	200 kN, maximum recommended because of strength construction
Shear stress	35 kN, maximum admissible
Per coupling side	Tensile stress: $x * 200$ kN
	Shear stress: $x * 35$ kN
	(by use of x couplings each side)

Description

The coupling of the Confloater - Coupling System comprises separate components which are mounted in the pontoons prior to the assembly. The coupling forms a "Bolt & Nut" connection consisting of a high-grade bolt, a guide sleeve for the bolt and a nut. Based on a predefined configuration both the Male and Female components are mounted in the containers, so they will be at opposite positions during assembly. Each container-side contains twelve (12) coupling positions, whereof three (3) are positioned next to each other in each corner. After those preparations on shore the pontoon will be assembled. As soon as the bolts are aligned to the corresponding nuts they will be immediately tightened by using an impact wrench. After all containers are assembled, each bolt will be pre-tensioned by means of a pneumatic torque wrench set to a preload of 350 kN. This method creates a shock-proof and virtually seamless assembly that can absorb high dynamic loads.



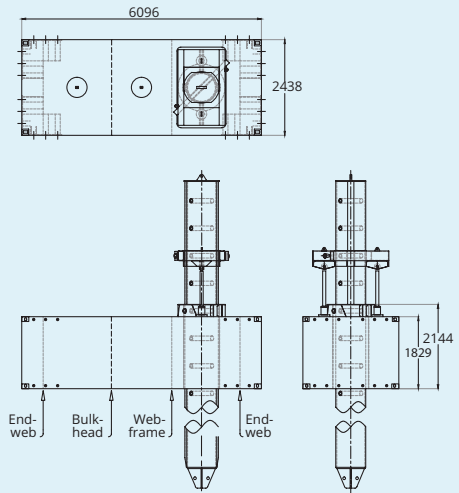
Modular Pontoon 6' - 20' Hydraulic Spud

Main Specifications

Length	6.10 m (20')
Breadth	2.44 m (8')
Depth	1.83 m (6')
Deck load	6 tonnes/m ²
Number of water-tight compartments	2
Weight	7.800 kg

Classification

Class society	DNV-GL or Bureau Veritas
Class notation	Inland waters, sheltered area, coastal area



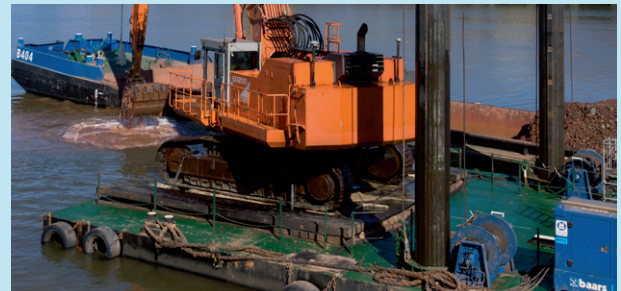
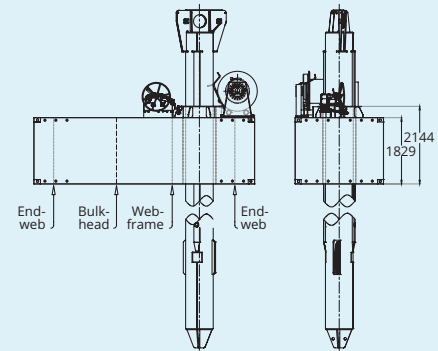
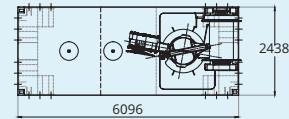
Modular Pontoon 6' - 20' Wire Spud

Main Specifications

Length	6.10 m (20')
Breadth	2.44 m (8')
Depth	1.83 m (6')
Deck load	6 tonnes/m ²
Number of water-tight compartments	2
Weight	7650 kg

Classification

Class society	DNV-GL or Bureau Veritas
Class notation	Inland waters, sheltered area, coastal area



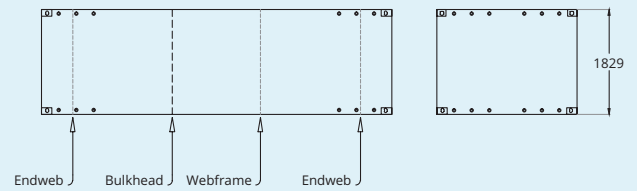
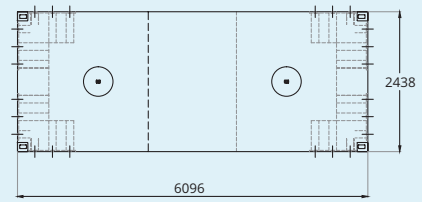
Modular Pontoon 6' - 20' Standard

Main Specifications

Length	6.10 m (20')
Breadth	2.44 m (8')
Depth	1.83 m (6')
Deck load	6 tonnes/m ²
Number of water-tight compartments	2
Weight	6.170 kg

Classification

Class society	DNV-GL or Bureau Veritas
Class notation	Inland waters, sheltered area, coastal area



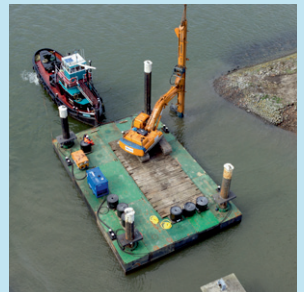
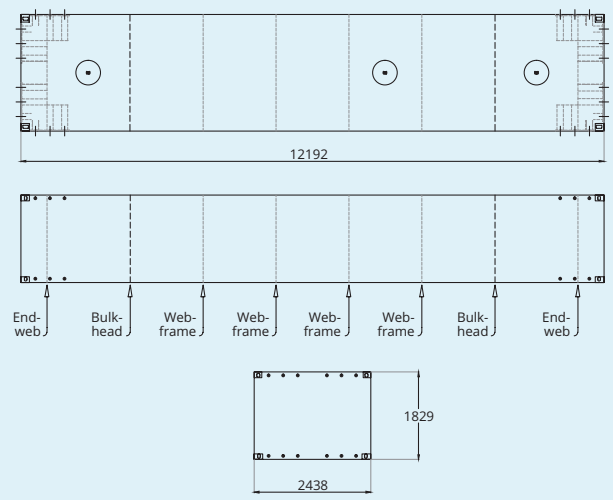
Modular Pontoon 6' - 40' Standard

Main Specifications

Length	12.19 m (40')
Breadth	2.44 m (8')
Depth	1.83 m (6')
Deck load	6 tonnes/m ²
Number of water-tight compartments	3
Weight	10.920 kg

Classification

Class society	DNV-GL or Bureau Veritas
Class notation	Inland waters, sheltered area, coastal area



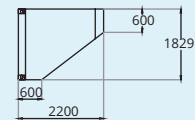
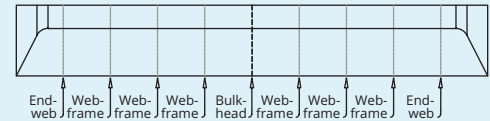
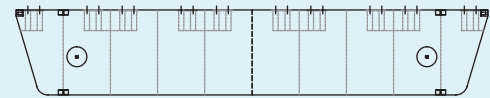
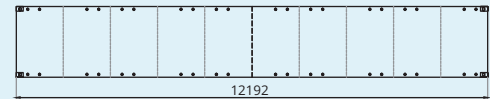
Modular Pontoon 6' - 40' Bow

Main Specifications

Length	12.19 m (40')
Breadth	2.20 m (7,2')
Depth	1.83 m (6')
Deck load	6 tonnes/m ²
Number of water-tight compartments	2
Weight	9.000 kg

Classification

Class society	DNV-GL or Bureau Veritas
Class notation	Inland waters, sheltered area, coastal area



Modular Jack-up 6'

Main Specifications

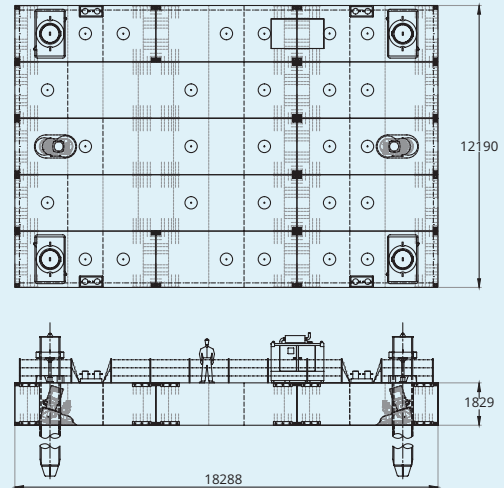
Length	18.29 m
Breadth	12.19 m
Depth	1.83 m
Deck load	6 tonnes/m ²
Spud legs Ø 762 mm, 12 – 24m (alternative lengths on request)	4 pcs

Specifications

Hydraulic system	2 cylinders (each spud)
Jacking capacity	50 tonnes (each spud)
HPU	John Deere, 62 kW, 250 bar working pressure, 120 ltr/min flow, remote controlled
Jacking system	Manually operated (pins)
Payload	50 tonnes
Optional	assisted propulsion

Classification

Class society	DNV-GL or Bureau Veritas
Class notation	Inland waters, sheltered area, coastal area



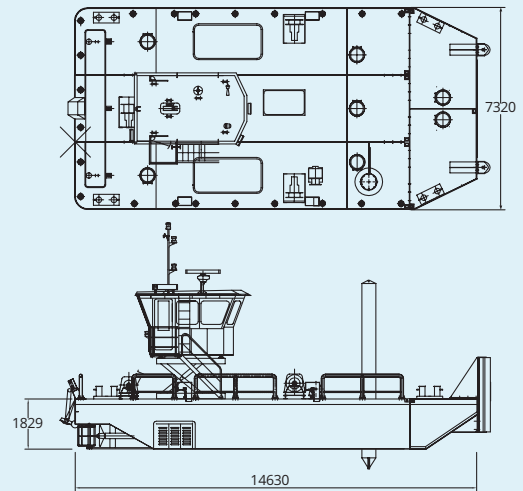
Modular Multi Pontoon

Main Specifications

Length	14.63 m
Breadth	7.32 m
Depth	1.83 m
Min draught	1.00 m
Max draught	1.50 m
Air draught	4.50 m
Max view height	4.50 m
Bollard Pull	6 tonnes
Speed	7 knots
Fuel oil	12 m ³
Freshwater	10 m ³
Lub oil	1 m ³
Hydraulic oil	1 m ³

Propulsion system

Main Engines	John Deere 300 HP including CCR 2 certificate
Cylinders	6 in line
RPM	2300 rpm/min
Total Power	2 pcs approx. 300 HP
Gear boxes	2 x twin disc MG5050SC
Reduction	3.38:1
Propulsions	2 x Cunial propeller / 680 rpm
Diameter	2 x 780 mm
Wheelhouse equipment	VHF Maritime Radio Telephone, Navigation lights



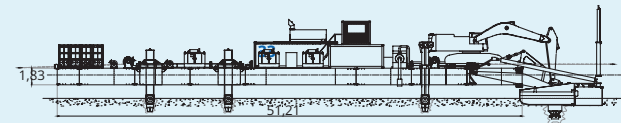
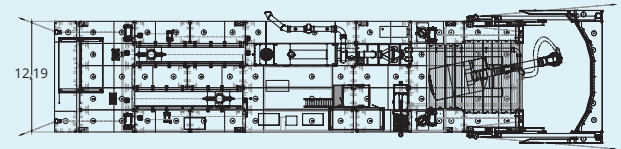
Modular Dredging Pontoon

Main Specifications

Length	51.21 m
Breadth	12.19 m
Loading Capacity	624 tonnes

Components

- 17 pcs 20 ft Confloat Container Pontoons
- 9 pcs 40 ft Container Pontoons
- 2 pcs walking spudlegs
- 2 pcs winch operated legs
- 3 pcs Hydraulic Power Unit 68 KW
- 1 pc 20 KvA Aggregaat
- 1 pc 100 KvA Aggregaat
- 4 pcs Anchor Winches 18 tonnes with 4 tonnes Delta flipper anchors
- 1 pc Booster 1.200 KW with 4,5 km pipeline Ø 500 mm
- 2 pcs DOP pump type 3530
- 1 pc CAT 385 excavator
- 1 pc Jetwaterpomp
- 1 pc Slurry Blade



Modular Drilling Pontoon Le Fumay

Main Specifications

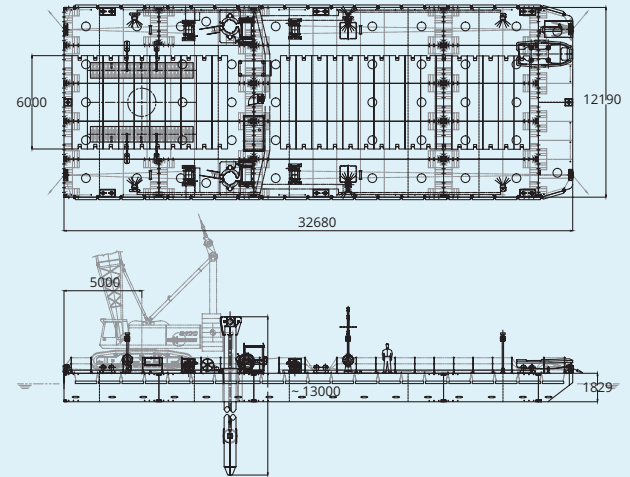
Length	32.68 m
Breadth	12.19 m
Depth	1.83 m
Loading capacity	380 tonnes

The modular container pontoon consists of:

- 8 pcs 40' Confloat Containers Pontoons
- 7 pcs 20' Confloat Container Pontoons
- 2 pcs 20' Confloat Container with spud
- 1 pc 40' Confloat Container with bow
- 2 pcs \varnothing 792 x 20-25 mm Spudlegs
- 1 pc Hydraulic power unit 62 Kw
- 26 pcs Dragline mats
- 1 pc Generator 20 KVA
- 2 pcs Single drum hydraulic winches 18 tonnes
- 4 pcs Mooring/ anchor hydraulic winch 7 tonnes
- 2 pcs Tensioning winch 20 tonnes
- 6 pcs Masts for work lights
- 1 pc Navigation mast
- 1 pc Electrical main switchboard
- 42 pcs Fenders

Crawler crane Sennebogen 6100 HD

Weight	100 tonnes
Boom	35.5 m



Modular Pontoon Seysel

Main Specifications

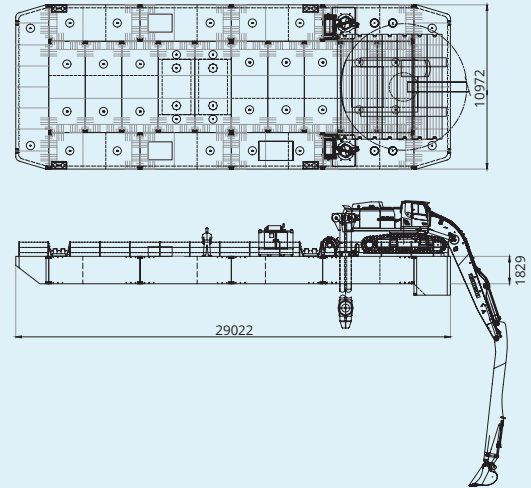
Length	29.02 m
Breadth	10.97 m
Depth	1.83 m
Loading capacity	320 tonnes

The Modular Container Pontoon consists of:

- 14 pcs 20' Confloat Container Standard
- 2 pcs 20' Confloat Container including Fuel Tank 6m³
- 2 pcs 20' Confloat Container with spud casing
- 1 pc 36' Confloat Container with bow
- 1 pc 36' Confloat Container backhoe edition
- 2 pcs Hammerhead spudlegs, Ø763 x 24 x 24.000 mm
- 1 pc Hydraulic Single drum spud winch 18 tonnes capacity
- 1 pc Diesel driven hydraulic power pack 62 KW remote controlled
- 4 pcs Double bollard chest
- 1 pc Assembly tool box

Excavator Liebherr 966

Weight	70 tonnes
Dredging depth	10 m
Bucket size	2,5 m ³



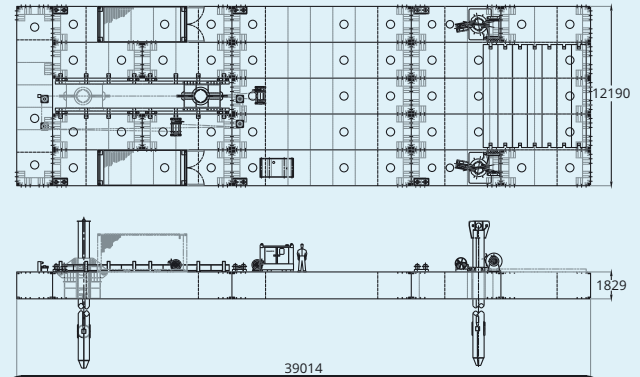
Pontoon with walking spud leg

Main Specifications

Length	39.01 m
Breadth	12.19 m
Depth	1.83 m
Deckload	6 tonnes/m ²
Deckload with dragline mats	20 tonnes/m ²
Spud legs Ø 762 mm	3 pcs
Double bollard chest	8 pcs
Powerpack remote controlled	1 pc
Loading capacity at 50 cm freeboard	476 tonnes
7 tonnes Double Drum Winch	1 pc
Guide rollers	4 pcs
18 tonnes Spud Winch	2 pcs
10 tonnes Spud Carriage Winch	1 pc

Excavator CAT 385 LLR

Weight	100 tonnes
Dredging depth	15 m
Bucket size	3 m ³



Pontoon with ramp

Main Specifications

Length	36.58 m
Breadth	14.63 m
Depth	1.83 m
Deckload	6 tonnes/m ²
Deckload with dragline mats	20 tonnes/m ²
Spud legs Ø 762 mm	4 pcs
Double bollard chest	6 pcs
Powerpack remote controlled	1 pc
Loading capacity at 50 cm freeboard	535 tonnes

Excavator Hitachi 870 LCH

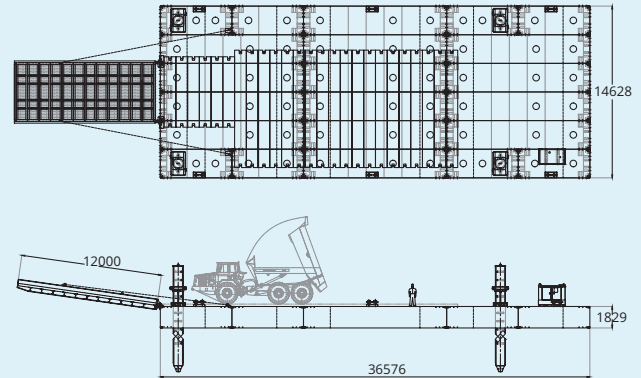
Weight	85 tonnes
Dredging depth	14 m
Bucket size	2.5 m ³

Ramp

Length	12.28 m
Breadth	5.30 m
Height	0.90 m
Capacity	80 tonnes

Dumptruck Volvo A 30

Operational weight loaded	70 tonnes
---------------------------	-----------



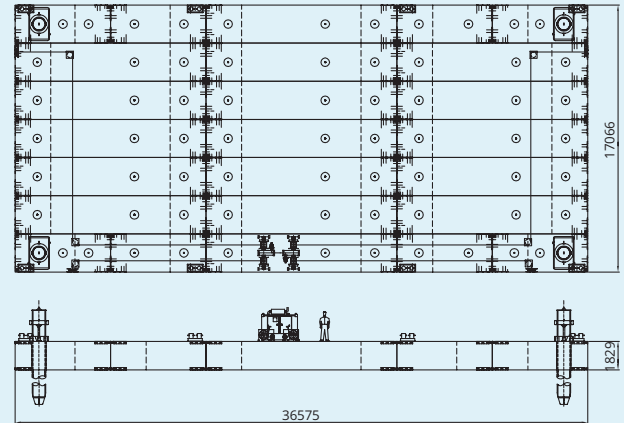
Pontoon with drilling equipment

Main Specifications

Length	36.58 m
Breadth	17.07 m
Depth	1.83 m
Deckload	6 tonnes/m ²
Deckload with dragline mats	20 tonnes/m ²
Spud legs Ø 762 mm	4 pcs
Double bollard chest	8 pcs
Powerpack remote controlled	1 pc
Loading capacity at 50 cm freeboard	624 tonnes
7 tonnes Double drum winch	2 pcs
Guide rollers	6 pcs
Fair lead	4 pcs

Crane Liebherr HS 895 HD

Operational Weight	200 tonnes
Vibrator	11.7 tonnes
Steel pipe	30 tonnes



CONTAINER PONTONS 9,5'



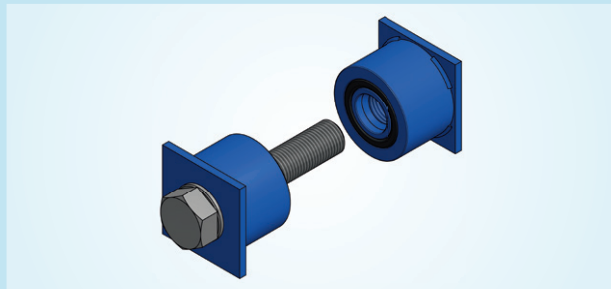
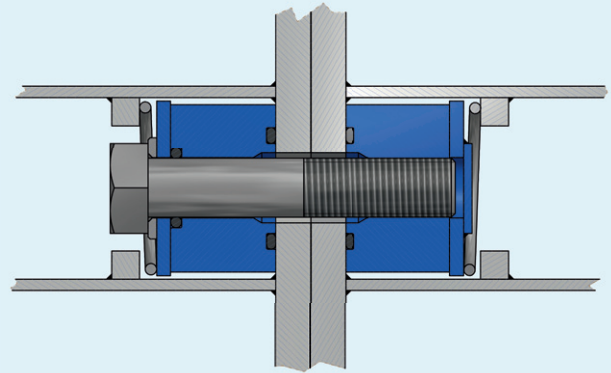
Coupling 9,5' Container M42

Main Specifications

Pre-tensioning	737 kN, (10kN = 1 tonnes)
Certification	Approved by Bureau Veritas.

Description

The M42 Coupling system is specially designed for modular seagoing equipment. Following the successful path of the original Confloat Coupling, the M42 Coupling meets the demand for heavier equipment by providing higher strength capabilities. Just like it's smaller sibling the M42 Confloat Coupling System comprises separate components that are mounted in the pontoons prior to the assembly. The coupling forms a "Bolt & Nut" connection, consisting of a high-grade bolt, a guide sleeve for the bolt and a nut. Based on a predefined configuration both the Male and Female components are mounted in the containers, so they will be at opposite positions during assembly. Each high cube 40 ft container-side contains twenty-four (24) coupling positions, while it's 20 ft equivalent contains twelve (12) coupling positions. Both 20'-and 40' containers have eight (8) coupling positions at the front-/backside. After those preparations on shore the pontoon will be assembled. As soon as the bolts are aligned to the corresponding nuts they will be immediately tightened by using an impact wrench. After all containers are assembled, each bolt will be pre-tensioned by means of a pneumatic torque wrench set to a preload of 737 kN. This method creates a shock-proof and virtually seamless assembly that can absorb high dynamic loads.



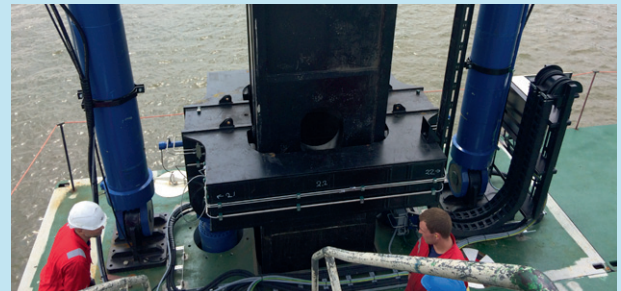
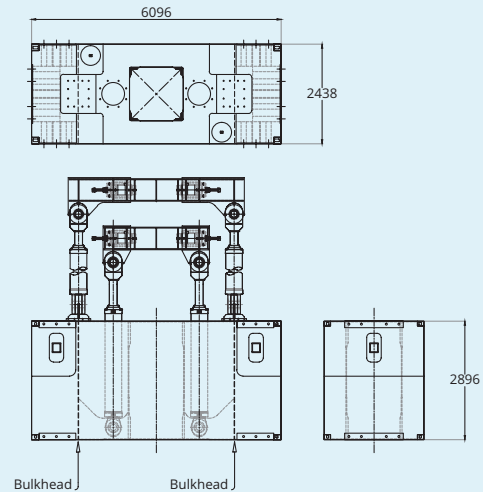
Modular Pontoon 9.5' - 20' Hydraulic Spud

Main Specifications

Length	6.10 m (20')
Breadth	2.44 m (8')
Depth	2.90 m (9.5')
Deck load	12 tonnes/m ²
Number of water-tight compartments	3
Weight (container only)	19.810 kg

Classification

Class society	DNV-GL or Bureau Veritas
Class notation	Inland waters, sheltered area, coastal area



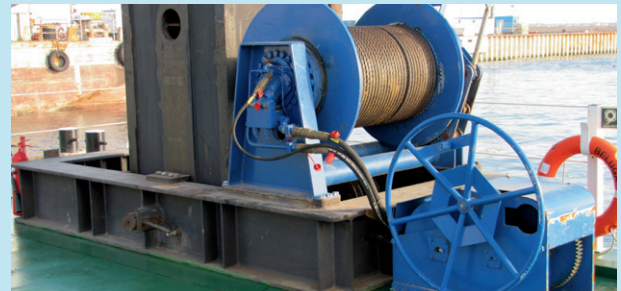
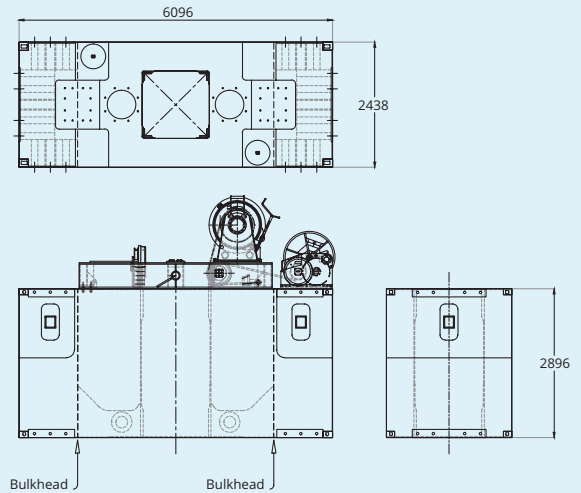
Modular Pontoon 9.5' - 20' Wire Spud

Main Specifications

Length	6.10 m (20')
Breadth	2.44 m (8')
Depth	2.90 m (9.5')
Deck load	12 tonnes/m ²
Number of water-tight compartments	3
Weight (container only)	19,810 kg

Classification

Class society	DNV-GL or Bureau Veritas
Class notation	Inland waters, sheltered area, coastal area



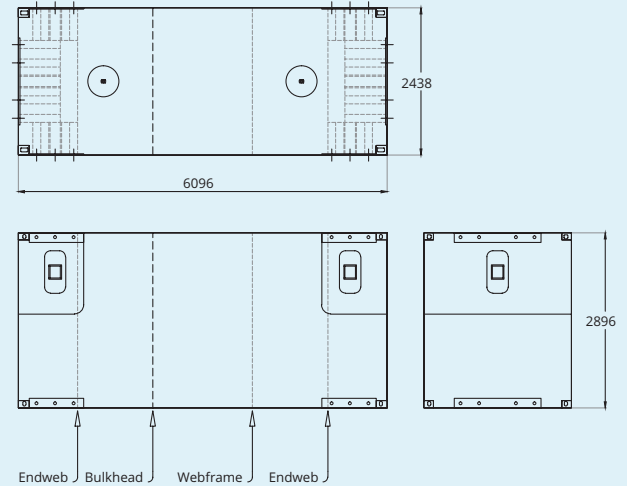
Modular Pontoon 9.5' - 20' Standard

Main Specifications

Length	6.10 m (20')
Breadth	2.44 m (8')
Depth	2.90 m (9.5')
Deck load	12 tonnes/m ²
Number of water-tight compartments	2
Weight	10,835 kg

Classification

Class society	DNV-GL or Bureau Veritas
Class notation	Inland waters, sheltered area, coastal area



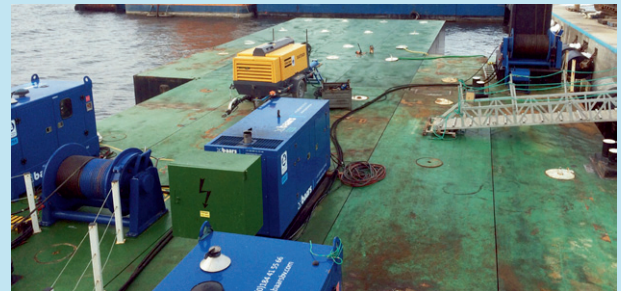
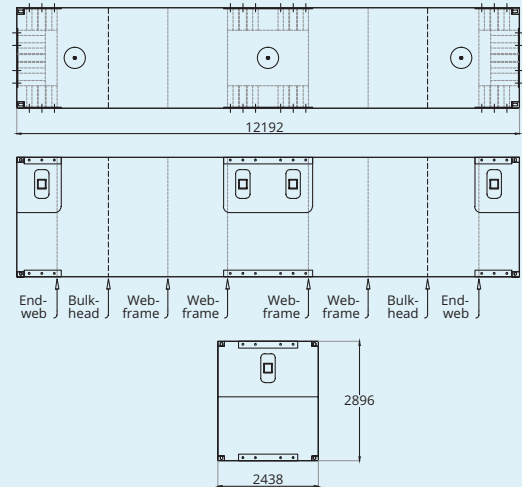
Modular Pontoon 9.5' - 40' Standard

Main Specifications

Length	12.19 m (40')
Breadth	2.44 m (8')
Depth	2.90 m (9.5')
Deck load	12 tonnes/m ²
Number of water-tight compartments	3
Weight	19.060 kg

Classification

Class society	DNV-GL or Bureau Veritas
Class notation	Inland waters, sheltered area, coastal area



Modular Jack-up 9.5'

Main Specifications

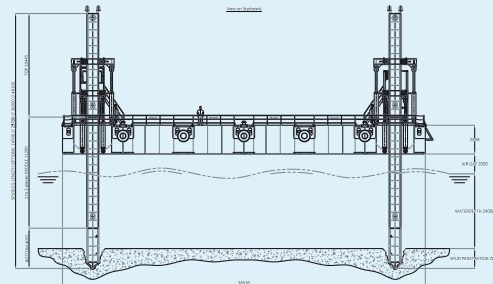
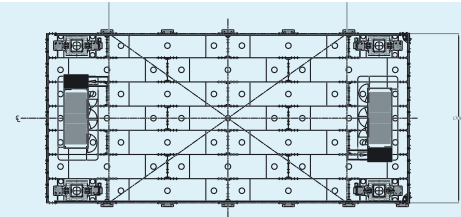
Length	36.58 m
Breadth	17.07 m
Depth	2.90 m
Draught unloaded	0.70 m
Draught loaded	2.08 m
Weight	560 tonnes
Deck load	12 tonnes/m ²
Max payload	400 tonnes
Jacking speed	36 meter / hour
Jacking stroke	1.60 meter

Technical specifications spud legs

Number	4
Length	36.00 m
Length (optional)	48.00 m
Breadth (length)	1.200 mm
Breadth (width)	1.200 mm
Weight	70.8 tonnes

Classification

Class society	DNV-GL or Bureau Veritas
Class notation	I ✕ Hull ● Machinery
	Offshore self-elevating unit
	Special service construction unit
	Coastal area 20 miles from shore HS < 2.50 m



Beluga

Main Specifications

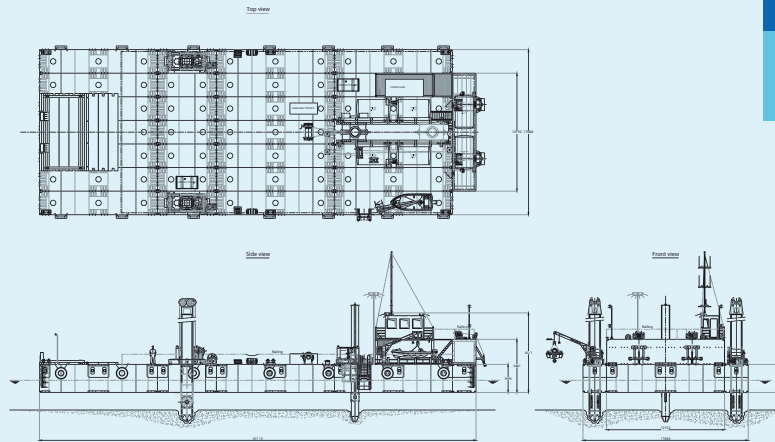
Length	45,11 m
Breadth	17,07 m
Depth	2,90 m
Loading capacity	700 tonnes

The Modular Container Pontoon consists of:

- 10 pcs 40' Confloat Containers Pontoons
- 2 pcs 20' Confloat Container Pontoons
- 2 pcs 20' Confloat Container with spud
- 1 pc 40' Confloat Container with storage
- 2 pcs Hammerhead spud legs 1.200 x 1.200 x 18.000 mm
- 1 pc Walking spud leg Ø 760 x 18.000 mm
- 1 pc Control unit incl. lightmasts
- 1 pc Accomodation unit
- 2 pcs Hydraulic single drum spud leg winch 18 tonnes capacity
- 2 pcs Hydraulic single drum anchor winch 7 tonnes capacity
- 2 pcs Hand operated single drum winch 40 tonnes
- 1 pc Diesel driven hydraulic power pack remote controlled
- 1 pc 50 kVA Generator and 2 pcs Excavator blocks
- 6 pcs Wooden matrasses and 6 pcs Double bollards
- 16 pcs Fenders and Solas equipment

Excavator Caterpillar 395

Weight	120 tonnes
Dredging depth	10 m
Bucket size	6 m ³



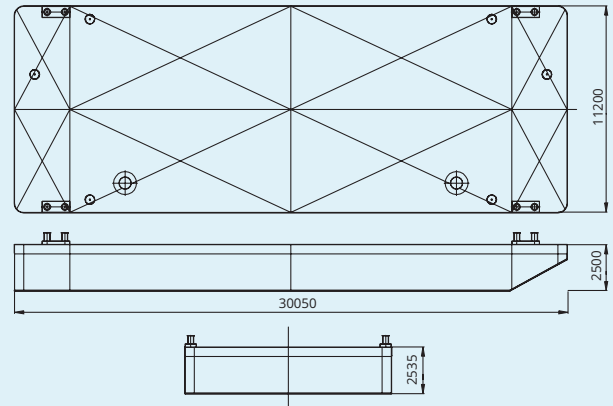
MONO PONTON



Mono Pontoon

Main Specifications

Length	30.05 m
Breadth	11.20 m
Depth	2.50 m
Deck load	6 tonnes/m ²
Deck load with dragline mats	20 tonnes/m ²
Number of water-tight compartments	n/a
Average draft	0.48 m



SPLIT HOPPER BARGES



Dismountable Split Hopper Barge 160 m³

Main Specifications

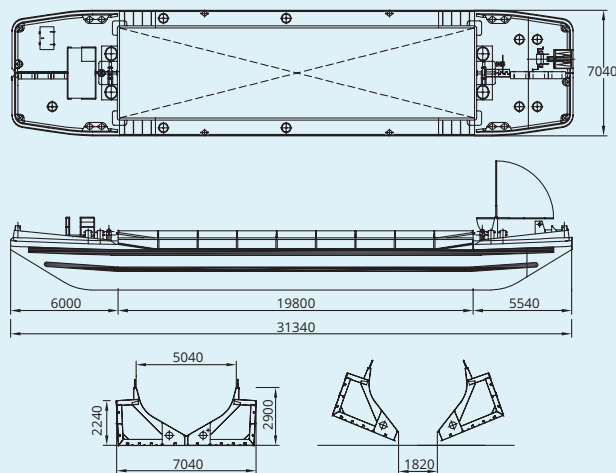
Length over all	31.34 m
Breadth over all	7.04 m
Depth	2.24 m
Seagoing draught loaded	2.02 m
Seagoing dredging freeboard	0.23 m
Seagoing loading capacity	287 tonnes
Inland draught loaded	2.10 m
Inland dredging freeboard	0.15 m
Inland loading capacity	296 tonnes
Air draught (above lightship draught)	3.55 m
Draught unloaded	0.58 m

Hopper hold

Volume	160 m ³
Length	19.80 m
Breadth on coaming	5.04 m
Bottom opening	1.82 m

Particulars

Split Hopper Barge no.	B17, B103, B104 (3 no.)
Built	2009 - 2016
Inland Classification	NSI (CvO/CBB) Zone 2 (NL), 3, 4 + Rhine
Weight	92 tonnes
Additional information	4 parts transportable, remote controlled



Split Hopper Barge 335 m³

Main Specifications

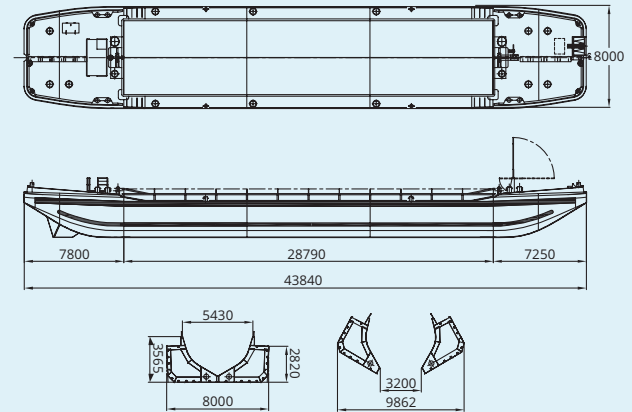
Length over all	43.84 m
Breadth over all	8.00 m
Depth	2.82 m
Seagoing draught loaded	2.12 m
Seagoing dredging freeboard	0.40 m
Seagoing loading capacity	455 tonnes
Inland draught loaded	2.74 m
Inland dredging freeboard	0.07 m
Inland loading capacity	637 tonnes
Air draught (above lightship draught)	3.56 m
Draught unloaded	0.69 m

Hopper hold

Volume	335 m ³
Length	28.79 m
Breadth on coaming	5.43 m
Bottom opening	3.20 m

Particulars

Split Hopper Barge no.	B34 - B35, B38 - B39, (4 no.)
Built	2011
Seagoing Classification	GL ✱ 100 A5 RSA (20)
Inland Classification	NSI (CvO/CBB)
	Zone 2 (NL), 3, 4 + Rhine
Split Hopper Barge no.	B302 (1 no.)
Weight	175 tonnes
Additional information	Remote controlled



Split Hopper Barge 450 m³

Main Specifications

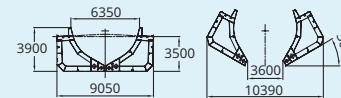
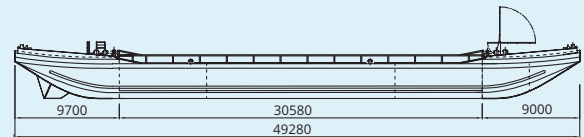
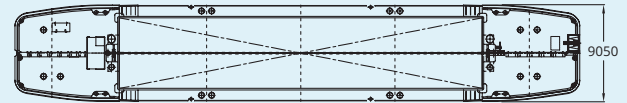
Length over all	49.28 m
Breadth over all	9.05 m
Depth	3.50 m
Seagoing draught loaded	2.95 m
Seagoing dredging freeboard	0.45 m
Seagoing loading capacity	820 tonnes
Inland draught loaded	3.25 m
Inland dredging freeboard	0.15 m
Inland loading capacity	908 tonnes
Air draught (above lightship draught)	4.30 m
Draught unloaded	0.78 m

Hopper hold

Volume	450 m ³
Length	30.58 m
Breadth on coaming	6.35 m
Bottom opening	3.60 m

Particulars

Split Hopper Barge no.	B401 - B404 (4 no.)
Built	2014 - 2015
Seagoing Classification	GL ✱ 100 A5 RSA (20)
Inland Classification	NSI (CvO/CBB)
	Zone 2 (NL), 3, 4 + Rhine
Weight	240 tonnes
Additional information	Remote controlled



Split Hopper Barge 600 m³

Main Specifications

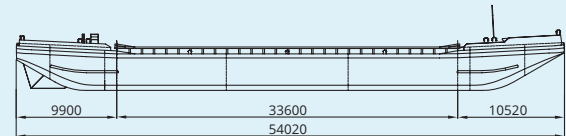
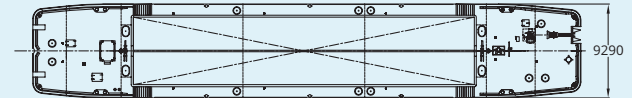
Length over all	54.02 m
Breadth over all	9.29 m
Depth	3.60 m
Seagoing draught loaded	3.15 m
Seagoing dredging freeboard	0.45 m
Seagoing loading capacity	1027 tonnes
Inland draught loaded	3.55 m
Inland dredging freeboard	0.05 m
Inland loading capacity	1193 tonnes
Air draught (above lightship draught)	5.23 m
Draught unloaded	0.86 m

Hopper hold

Volume	600 m ³
Length	33.60 m
Breadth on coaming	7.60 m
Bottom opening	3.90 m

Particulars

Split Hopper Barge no.	B601, B602 (2 no.)
Built	2014
Seagoing Classification	GL ✱ 100 A5 RSA (20)
Inland Classification	NSI (CvO/CBB)
	Zone 2 (NL), 3, 4 + Rhine
Weight	320 tonnes
Additional information	Remote controlled



Split Hopper Barge 850 m³

Main Specifications

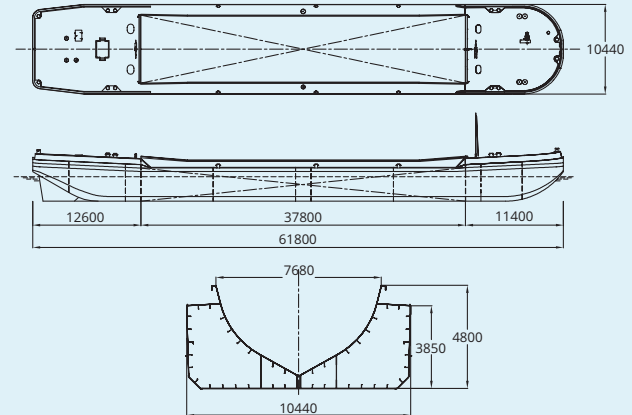
Length over all	61.80 m
Breadth over all	10.44 m
Depth	3.85 m
Seagoing draught loaded	2.85 m
Seagoing dredging freeboard	1.00 m
Seagoing loading capacity	1287 tonnes
Inland draught loaded	3.82 m
Inland dredging freeboard	0.05 m
Inland loading capacity	1731 tonnes
Air draught (above lightship draught)	5.60 m
Draught unloaded	0.80 m

Hopper hold

Volume	844 m ³
Length	37.80 m
Breadth on coaming	7.68 m
Bottom opening	3.65 m

Particulars

Split Hopper Barge no.	B801 - B804 (4 no.)
Built	2012, 2013
Seagoing Classification	GL ✕ 100 A5 RSA (20)
Inland Classification	NSI (CvO/CBB)
	Zone 2 (NL), 3, 4 + Rhine
Weight	430 tonnes
Additional information	Remote controlled



Split Hopper Barge 1000 m³

Main Specifications

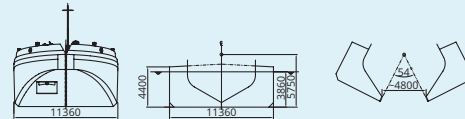
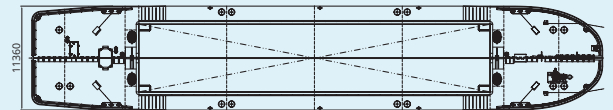
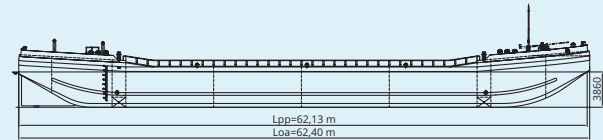
Length over all	62.40 m
Breadth over all	11.40 m
Depth	4.40 m
Seagoing draught loaded	3.85 m
Seagoing dredging freeboard	0.55 m
Seagoing loading capacity	1850 tonnes
Inland draught loaded	4.13 m
Inland dredging freeboard	0.28 m
Inland loading capacity	2000 tonnes
Air draught (above lightship draught)	6.4 m
Draught unloaded	1.0 m

Hopper hold

Volume	1000 m ³
Length	44.80 m
Breadth on coaming	7.4 m
Bottom opening	4.8 m

Particulars

Split hopper barge no.	B1001- B1002 (2 no.)
Built	2016
Seagoing Classification	GL ✱ 100 A5 RSA (20)
Inland Classification	NSI (CvO/CBB)
	Zone 2 (NL), 3, 4 + Rhine
Weight	485 tonnes
Additional information	Remote controlled



DRYWELL / HOPPER BARGES



Drywell Hopper Barge 240 m³

Main Specifications

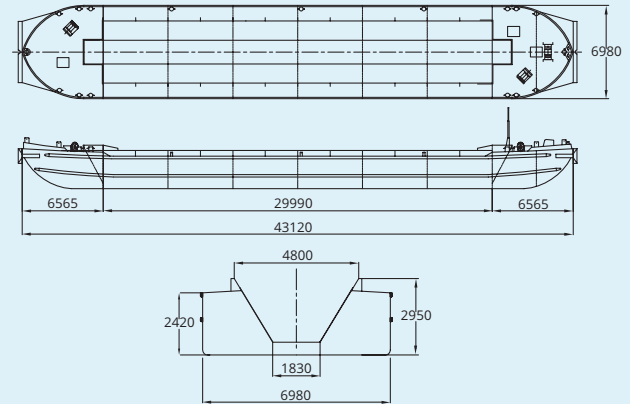
Length over all	43.12 m
Breadth over all	6.98 m
Depth	2.42 m
Free board	0.14 m
Air draught	3.50 m
Draught unloaded	0.59 m
Draught loaded	2.28 m
Loading capacity	490 tonnes

Hopper hold

Volume	240 m ³
Length	29.99 m
Breadth on coaming	4.80 m
Breadth on floor	1.83 m
Wear plates	13 mm

Particulars

Drywell Hopper Barge no.	B63, B64 (2 no.)
Built	1963 / adjusted 1991
Inland classification	NSI (CvO/CBB)
	Zone 2 (NL), 3, 4 + Rhine
Weight	150 tonnes



Drywell Hopper Barge 250 m³

Main Specifications

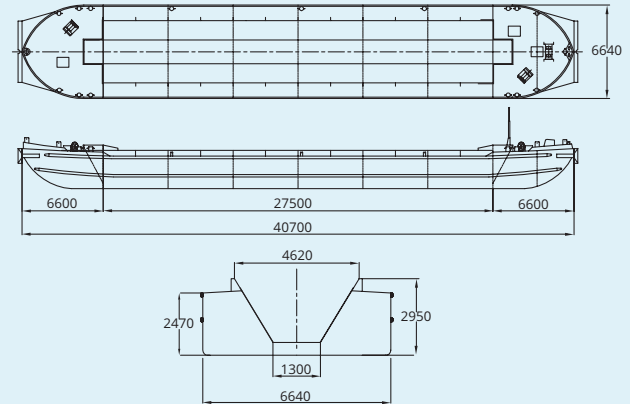
Length over all	40.70 m
Breadth over all	6.64 m
Depth	2.47 m
Free board	0.04 m
Air draught	3.74 m
Draught unloaded	0.55 m
Draught loaded	2.43 m
Loading capacity	461 tonnes

Hopper hold

Volume	250 m ³
Length	27.50 m
Breadth on coaming	4.62 m
Breadth on floor	1.30 m
Wear plates	12 mm

Particulars

Drywell Hopper Barge no.	B46, B47 (2 no.)
Built	1964 / adjusted 1989
Inland classification	NSI (CvO/CBB)
	Zone 2 (NL), 3, 4 + Rhine
Weight	124 tonnes



Drywell Hopper Barge 300 m³

Main Specifications

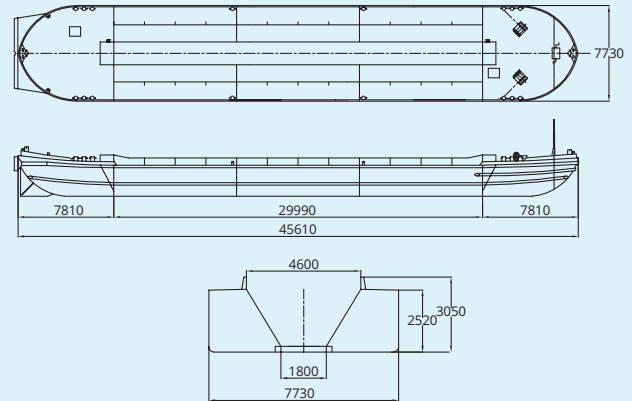
Length over all	45.61 m
Breadth over all	7.73 m
Depth	2.52 m
Free board	0.11 m
Air draught	4.10 m
Draught unloaded	0.57 m
Draught loaded	2.41 m
Loading capacity	566 tonnes

Hopper hold

Volume	300 m ³
Length	29.99 m
Breadth on coaming	4.60 m
Breadth on floor	1.80 m
Wear plates	13 mm

Particulars

Drywell Hopper Barge no.	B31
Built	1966
Inland classification	NSI (CvO/CBB)
	Zone 2 (NL), 3, 4 + Rhine
Weight	160 tonnes



Drywell Hopper Barge 425 m³

Main Specifications

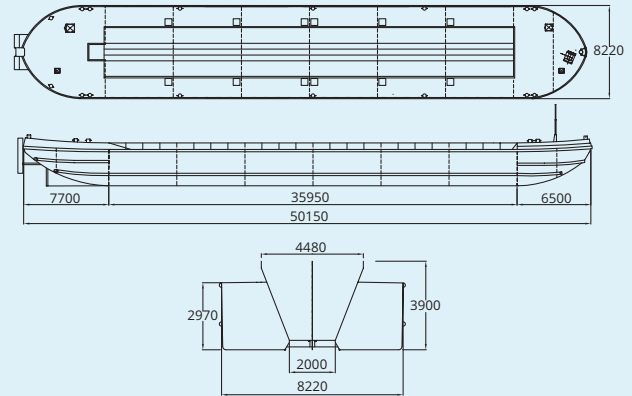
Length over all	50.15 m
Breadth over all	8.22 m
Depth	2.97 m
Free board	0.17 m
Air draught	4.20 m
Draught unloaded	0.61 m
Draught loaded	2.80 m
Loading capacity	817 tonnes

Hopper hold

Volume	425 m ³
Length	35.95 m
Breadth on coaming	4.48 m
Breadth on floor	2.00 m
Wear plates	16 mm

Particulars

Drywell Hopper Barge no.	B45
Built	1962 / adjusted 1988
Inland classification	NSI (CvO/CBB)
	Zone 2 (NL), 3, 4 + Rhine
Weight	210 tonnes



Drywell Hopper Barge 475 m³

Main Specifications

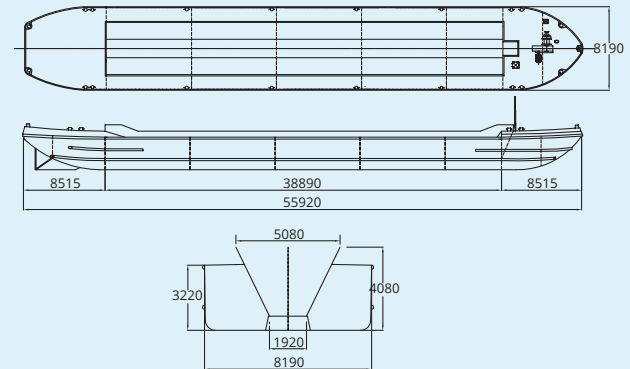
Length over all	55.92 m
Breadth over all	8.19 m
Depth	3.22 m
Free board	0.10 m
Air draught	4.80 m
Draught unloaded	0.71 m
Draught loaded	3.12 m
Loading capacity	993 tonnes

Hopper hold

Volume	475 m ³
Length	38.89 m
Breadth on coaming	5.08 m
Breadth on floor	1.92 m
Wear plates	13 mm

Particulars

Drywell Hopper Barge no.	B48
Built	1972 / adjusted 1998
Inland classification	NSI (CvO/CBB)
	Zone 2 (NL), 3, 4 + Rhine
Weight	275 tonnes



Hopper Barge 489 m³

Main Specifications

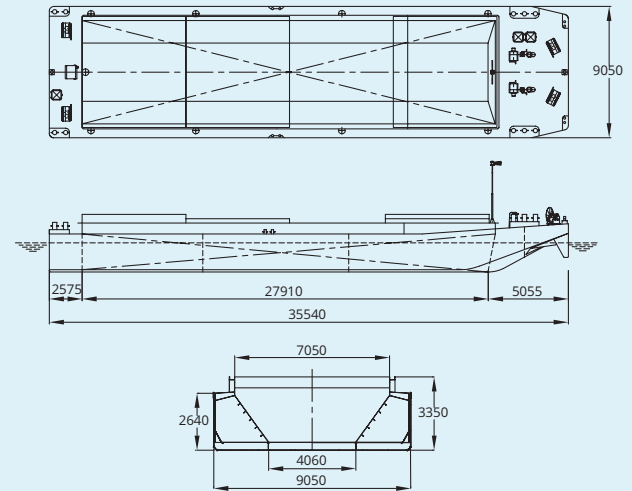
Length over all	35.54 m
Breadth over all	9.05 m
Depth	2.64 m
Free board	0.07 m
Air draught	4.22 m
Draught unloaded	0.52 m
Draught loaded	2.57 m
Loading capacity	602 tonnes

Hopper hold

Volume	489 m ³
Length	27.91 m
Breadth on coaming	7.05 m
Breadth on floor	4.06 m

Particulars

Hopper Barge no.	B51, B53 (2 no.)
Built	1983 / adjusted 2001
Inland classification	NSI (CvO/CBB)
	Zone 2 (NL), 3, 4 + Rhine
Certificate	Port of London Authority
Weight	240 tonnes



Hopper Barge 697 m³

Main Specifications

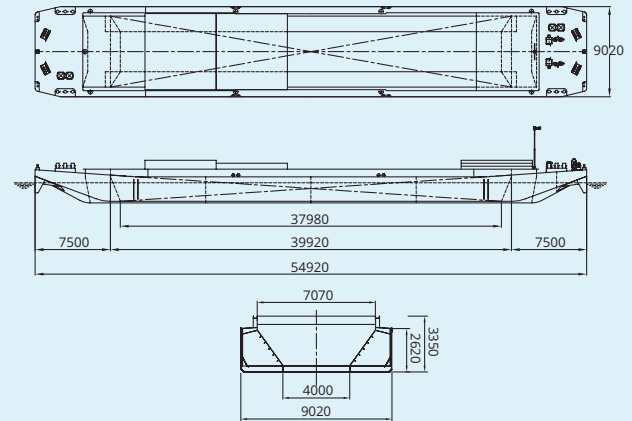
Length over all	54.92 m
Breadth over all	9.02 m
Depth	2.62 m
Free board	0.07 m
Air draught	4.25 m
Draught unloaded	0.56 m
Draught loaded	2.55 m
Loading capacity	847 tonnes

Hopper hold

Volume	697 m ³
Length	39.92 m
Breadth on coaming	7.07 m
Breadth on floor	4.00 m

Particulars

Hopper Barge no.	B75
Built	1984 / adjusted 2002
Inland classification	NSI (CvO/CBB)
	Zone 2 (NL), 3, 4 + Rhine
Weight	225 tonnes



Hopper Barge 881 m³

Main Specifications

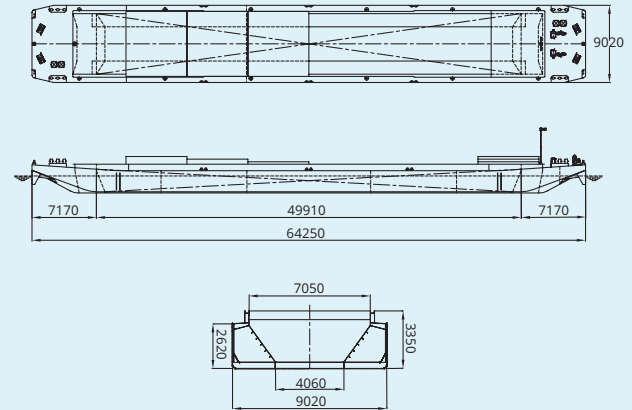
Length over all	64.25 m
Breadth over all	9.02 m
Depth	2.62 m
Free board	0.07 m
Air draught	4.26 m
Draught unloaded	0.54 m
Draught loaded	2.55 m
Loading capacity	1057 tonnes

Hopper hold

Volume	881 m ³
Length	49.91 m
Breadth on coaming	7.05 m
Breadth on floor	4.06 m

Particulars

Hopper Barge no.	B80 - B83 (4 no.)
Built	1983 / adjusted 2001 1985 / adjusted 2002
Inland classification	NSI (CvO/CBB) Zone 2 (NL), 3, 4 + Rhine
Certificate	Port of London Authority
Weight	255 tonnes



MARINE EQUIPMENT



Powerpack

Technical information

Length	2.280 mm
Breadth	1.280 mm
Height	1.863 mm
Total weight (without wire)	2.500 kg

Diesel engine

Number of cylinders	4
Power	71 kW
RPM	1.800
Cooling	Radiator cooled
Fuel	Gasoil
Fuel tank	160 liter

Hydraulic system

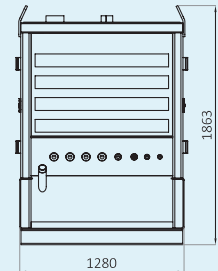
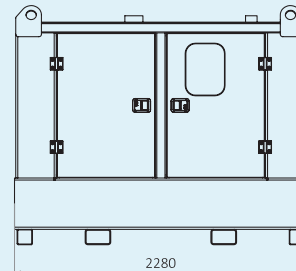
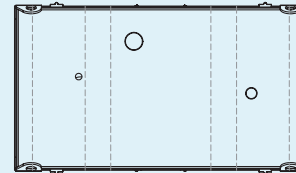
Working pressure	250 bar
Flow	140 liter/min
Hydraulic tank	600 liter

Electric system

Volt	12 Volt DC
Battery	1 x 12 Volt - 140 Ah
Main switch	Yes

Remote controller

Scanreco	8 functions
----------	-------------



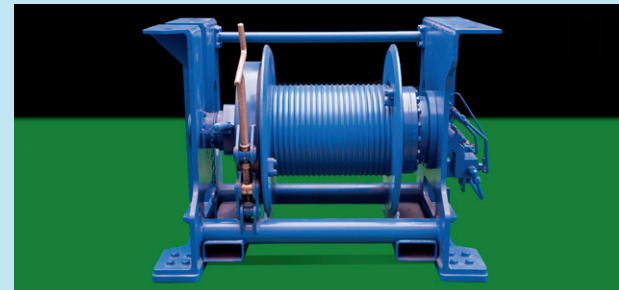
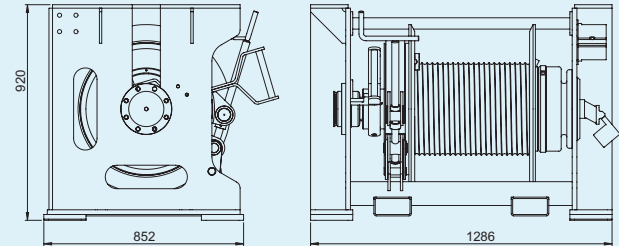
7 Tonnes Single Drum Winch

Technical information

Length	1.286 mm
Breadth	852 mm
Height	920 mm
Total weight (without wire)	1.000 kg
Power hydraulic: Hydro motor 32 cc, ΔP th = 240 bar pressure drop, oil flow Q_v th = 33 ltr/min.	
Gearbox: type OK F20 drive, filled with +/- 3 ltr. gearbox oil ISO-VG 150	
Clutch Hydraulic actuated expanding band type clutch, also the clutch can be mechanically locked by usage of 2 easy to install locking pins.	
Two types of breaks are installed: band brake manual released; hydraulic brake automatic released	
Control Local on power unit/remote	
The support bearing, drum bearings, clutch and brake spindle has to be lubricated with calcium grease, penetration class NLGL2	

Performance

Tension on 1st Layer	75 Kn.
Holding capacity 1st layer	100 Kn.
Diameter of steel wire	18 mm
Drum capacity	250 meter 7 layers
Rope speed	10 m/min First layer



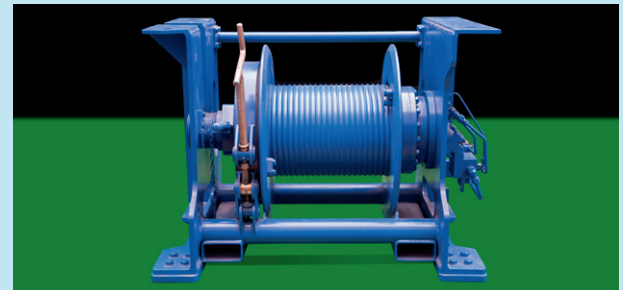
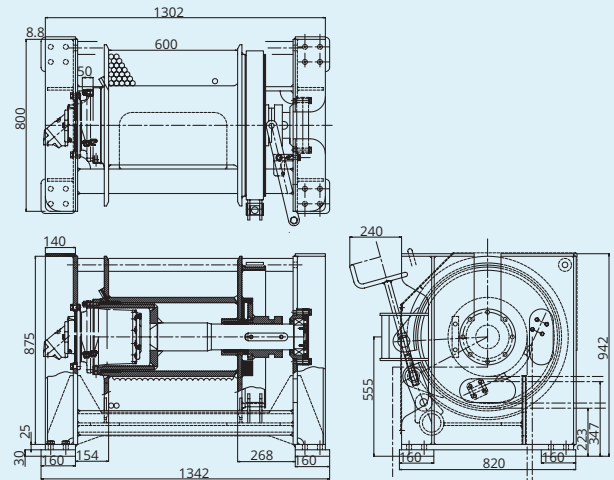
10 Tonnes Single Drum Winch

Technical information

Length	1.342 mm
Breadth	820 mm
Height	942 mm
Total weight (without wire)	1.350 kg
Power hydraulic: Hydro motor xx cc, ΔP th = 281 bar pressure drop, oil flow Qv th = 36 ltr/min.	
Gearbox: Type OK F 30 drive, factory filled with +/- xx ltr. gearbox oil ISO-VG 150	
Clutch Hydraulic actuated expanding band type clutch, also the clutch can be mechanically locked by usage of 2 easy to install locking pins.	
Two types of breaks are installed: band brake manual released; hydraulic brake automatic released	
Control Local on power unit/remote	
The support bearing, drum bearings, clutch and brake spindle has to be lubricated with calcium grease, penetration class NLGL2	

Performance

Tension on 1st Layer	100 Kn.
Holding capacity 1st layer	200 Kn.
Diameter of steel wire	24 mm
Drum capacity	270 meter 7 layers
Rope speed	10 m/min
max. rope speed at	80 Ltr/min 22m/min



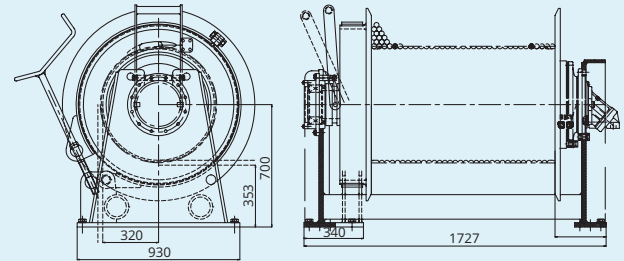
18 Tonnes Single Drum Winch

Technical information

Length	1.727 mm
Breadth	930 mm
Height	1.250 mm
Total weight (without wire)	2.750 kg
Power hydraulic: Hydro motor 125 cc, ΔP th = 255 bar pressure drop, oil flow Q_v th = 80 ltr/min. (max 160 ltr/min)	
Gearbox: type OK F80 drive, filled with +/- 8 ltr. gearbox oil, ISO-VG 150	
Clutch Hydraulic actuated expanding band type clutch, also the clutch can be mechanically locked by usage of 2 easy to install locking pins.	
Two types of breaks are installed: band brake manual released; hydraulic brake automatic released	
Control Local on power unit/remote	
The support bearing, drum bearings, clutch and brake spindle has to be lubricated with calcium grease, penetration class NLGL2	

Performance

Tension on 1st Layer	180 Kn.
Holding capacity 1st layer	100 Kn.
Diameter of steel wire	27 mm
Drum capacity	500 meter 6 layers
Rope speed	11 m/min First layer



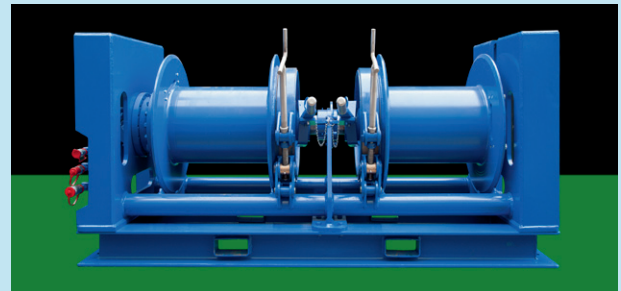
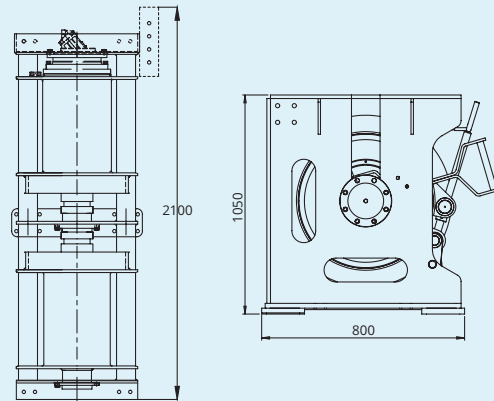
7 Tonnes Double Drum Winch

Technical information

Length	2.100 mm
Breadth	800 mm
Height	1.050 mm
Total weight	1.050 kg
Power hydraulic: Hydro motor 32 cc, ΔP th = 240 bar pressure drop, oil flow Q_v th = 33 ltr/min.	
Gearbox: Factory filled with +/- 3 ltr. gearbox oil ISO-VG 150	
Clutch Hydraulic actuated expanding band type clutch, also the clutch can be mechanically locked by usage of 2 easy to install locking pins.	
Two types of breaks are installed: band brake manual released; hydraulic brake automatic released	
Control Local on power unit/remote	

Performance

Tension on 1st Layer	75 Kn.
Tension on 3st Layer	65 Kn.
Holding capacity 1st layer	100 Kn.
Diameter of steel wire	18 mm
Drum capacity	250 meter 7 layers
Rope speed	10 m/min First layer



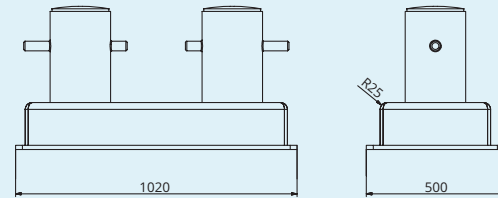
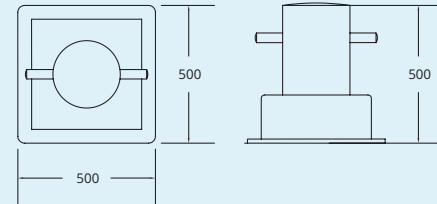
Single and Double Bollard Chest

Technical information Single bollard

Length	500 mm
Breadth	500 mm
Depth	500 mm
Total weight	80 kg

Technical information Double bollard

Length	1.020 mm
Breadth	500 mm
Depth	500 mm
Total weight	160 kg

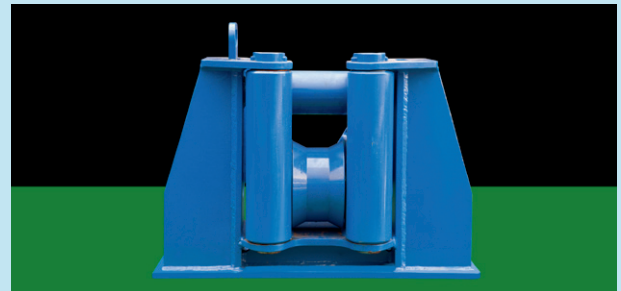
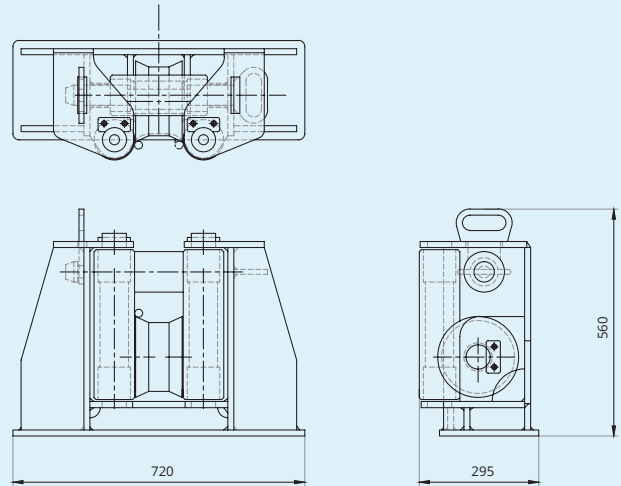


Roller Fairlead

Technical information

Length	720 mm
Breadth	295 mm
Height	560 mm
Total weight	235 kg
Wire Diameter	Ø18–20 mm
Ø18 mm MBL	23 tonnes
Ø20 mm MBL	28 tonnes

Built to withstand minimum breaking load (MBL) of indicated cable at 90°. Steel roller shafts with bronze bearing bushes. Base designed for welding to deck, construction made from steel, S355, completely painted according to Baars paint specifications.

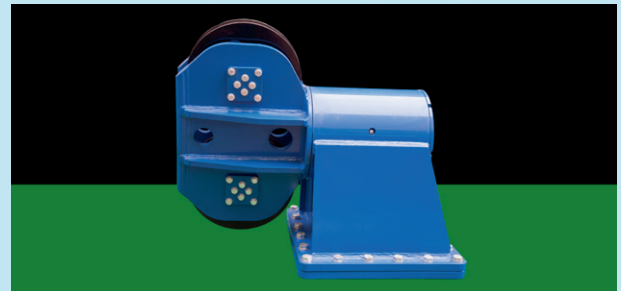
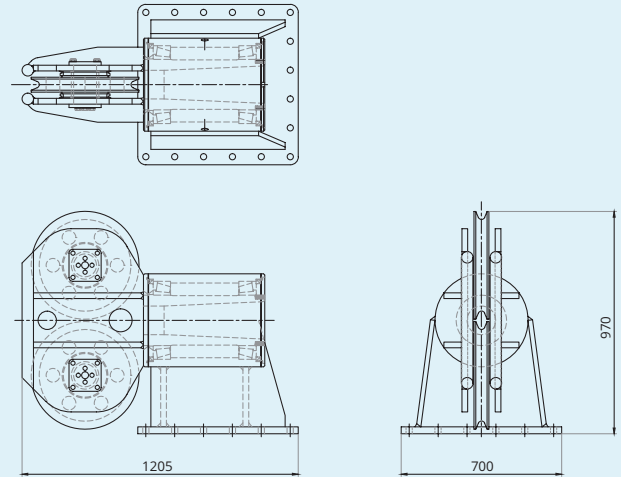


Swivelhead Fairlead

Technical information

Length	1205 mm
Breadth	700 mm
Height	970 mm
Total weight	1.050 kg
Wire diameter	Ø28–30 mm
Ø28 mm MBL	55 tonnes
Ø30 mm MBL	64 tonnes

Built to withstand minimum breaking load (MBL) of indicated cable at 90° sheave wrap and by 90° head swing. Barrel equipped with tapered roller bearings. Base designed for welding to deck, construction made from steel S355, completely painted according to Baars paint specifications.



Marine equipment



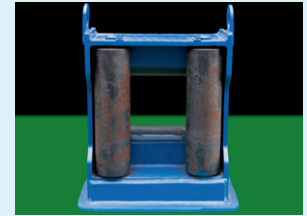
Fender



Guideroller



Toolbox containers



Roller Fairlead



Guideroller for wire 28 mm



Hydraulic hoses



Lifting table spud leg



Remote control

More information

Would you like to know more?

Our products are deployed internationally for dredging-, pile driving- and drilling projects. Many examples are shown on our website. Would you like a personal explanation or a quotation, free of engagement?

Please call us at **+31 (0)184 41 55 66** or send an e-mail to: **rental@baarsbv.com**



baars



QUALITY PONTOONS AND BARGES

Container Pontoons | Split Hopper Barges | Jack-ups
Drywell / Hopper Barges | Mono Pontoons